



पेयजल एवं स्वच्छता विभाग  
जल शक्ति मंत्रालय  
भारत सरकार

DEPARTMENT OF DRINKING WATER AND SANITATION  
MINISTRY OF JAL SHAKTI  
GOVERNMENT OF INDIA



Swachh Gram Swachh Zila

Swachh  
Survekshan  
Grameen 2019





पेयजल एवं स्वच्छता विभाग  
जल शक्ति मंत्रालय  
भारत सरकार

DEPARTMENT OF DRINKING WATER AND SANITATION  
MINISTRY OF JAL SHAKTI  
GOVERNMENT OF INDIA

सत्यमेव जयते



# CONTENTS

<b>Executive Summary</b>	<b>7</b>
<b>The main objectives of SBM-G 2019:</b>	<b>7</b>
<b>Ranking Methodology</b>	<b>8</b>
<b>Key Findings</b>	<b>9</b>
<b>Coverage and Quality Control</b>	<b>12</b>
<b>1. Introduction</b>	<b>16</b>
1.1 Background	17
1.2 Objectives	18
<b>2. National Highlights</b>	<b>20</b>
2.1 Highlights of Citizen Feedback, Service Level Progress and Direct Observation.	20
2.1.1 Citizen Feedback	20
2.1.2 Direct Observation	20
2.1.3 Service Level Progress (Self-Assessment by Districts )	21
2.2 Top Ranked States and Districts (Based on Total Score)	21
2.3 Ranking based on app and IVR Response (Absolute Number)	22
2.4 The Zone wise results of SGG 2019	22
<b>3. Survey Design</b>	<b>24</b>
3.1 Components of Swachh Survekshan Grameen 2019	24
3.2 Data Collection Method	24
3.3 Sample Design	28
3.4 Sample Coverage	25
<b>4. Assessment and Ranking Methodology</b>	<b>28</b>
4.1 Methodology for Ranking of Districts	28
4.1.1 Direct Observation - 30 Marks	28
4.1.2 Citizen's Feedback - 35 Marks	31
4.1.3 Service Level Progress - 35 Marks	35
<b>5. Survey Results</b>	<b>37</b>
5.1 Results of Citizen Feedback captured through Online APP and IVR	37
5.2 Survey Results from Direct Observations	39
<b>6. Ranks and Results of Top States and Districts</b>	<b>42</b>
6.1 Top Ranked States and Districts on Basis of the Total Score	42
6.2 Rank of States based on App and IVR Response for Citizen Feedback	42
6.3 Top Ranked States in the Zones	43
6.4 Ranking of All States and UTs on Total Score	44
6.5 Top 100 Districts on the Basis of Total Score	45
6.6 Ranking of States Based on Citizen Feedback	48
6.6.1 Ranking of States Based on Citizen Feedback (>30 lakh Population)	48
6.6.2 Ranking of States & UT based on Citizen Feedback (<30 lakh Population)	48
6.7 Service Level Progress Maximum Score	49
6.7.1 Service Level Progress Maximum Score (Larger State >30 lakh Population)	49
6.7.2 Service Level Progress Maximum Score (Larger State <30 lakh Population)	49
6.8. Direct Observation of Public Places	50
6.8.1 Direct Observation of Public Places (Larger State >30 lakh Population)	50
6.8.2 Direct Observation of Public Places (Larger State <30 lakh Population)	50
6.9 Scores of Top 20 Districts	51
6.9.1 Top 20 District Based on Direct Observation	51
6.9.2 Top 20 District Based on Citizen Feedback	51
6.9.3 Top 20 District Based on Service Level Progress	51
<b>7. Survey Implementation Process</b>	<b>53</b>
7.1 Launch process of Swachh Survekshan Grameen :	53
7.2 Research Tools and Development of Manuals	53
7.3 Data Collection	54
<b>Annexures 1 : Scores of Top Ranked States and Districts</b>	<b>57</b>
<b>Annexures 2 : Scores of Districts Covered in the Survey.</b>	<b>66</b>

# Executive Summary

# EXECUTIVE SUMMARY

The Swachh Survekshan Grameen, an annual national ranking of all districts and states of India on the basis of quantitative and qualitative sanitation (*swachhata*) parameters, has been instituted by the Department of Drinking Water and Sanitation, Ministry of Jal Shakti, since 2018. The ranking is based on a comprehensive set of parameters which include self-reporting by districts, data from the Swachh Bharat Mission – Grameen (SBM-G) Integrated Management Information System (IMIS), village-level surveys of public places like schools, anganwadi centres, PHCs, haat / bazaars, panchayat and citizen's perception of Swachhata and their recommendations for improvement of the programme.

The ranking of districts and states is done basis data gathered from the multifarious sources. The Ministry commissioned the survey to Ipsos Public Affairs and the scope of the survey was widened to cover 17,209 villages in 2019.

## The Main Objectives of SBM-G 2019:



Encourage large scale citizen participation and create awareness for Swachhata



Foster spirit of healthy competition among villages for cleanliness



Undertake a ranking of districts and states on key SBM-G parameters



Compare performance of the districts and states nationally on key SBM-G parameters



Ascertain progress of Swachhata (cleanliness) on ground through a sample survey



Engage with selected Gram Panchayats in every districts and solicit their feedback.



Assess the effectiveness of IEC/BCC interventions under SBM-G



The Swachh Survekshan Grameen (SSG) survey was a big draw pan-India and witnessed enthusiastic participation by citizens across all activities.

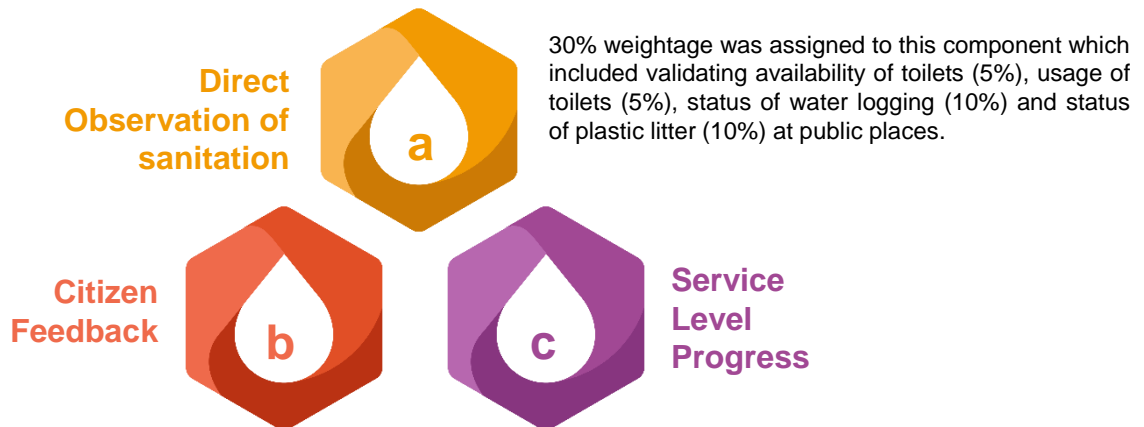
The state and the district administrations accelerated Information, Education and Communication efforts, triggering exercises, capacity building, implementation as well as monitoring activities in each district and for all gram panchayats. The activities augmented the institutional capacities of districts in undertaking intensive behaviour change at the grassroots level. In order to mobilize the citizen participation in the survey, a nation-wide mass media campaign was launched.

During the launch of SSG 2019, stakeholders were explained the survey methodology and process. The stakeholders were taken through the finer nuances of the survey, detailed methodology and the evaluation process. The stakeholders and the citizens were aligned on the overall objective of measuring improvement in sanitation levels in their villages.



## Ranking Methodology

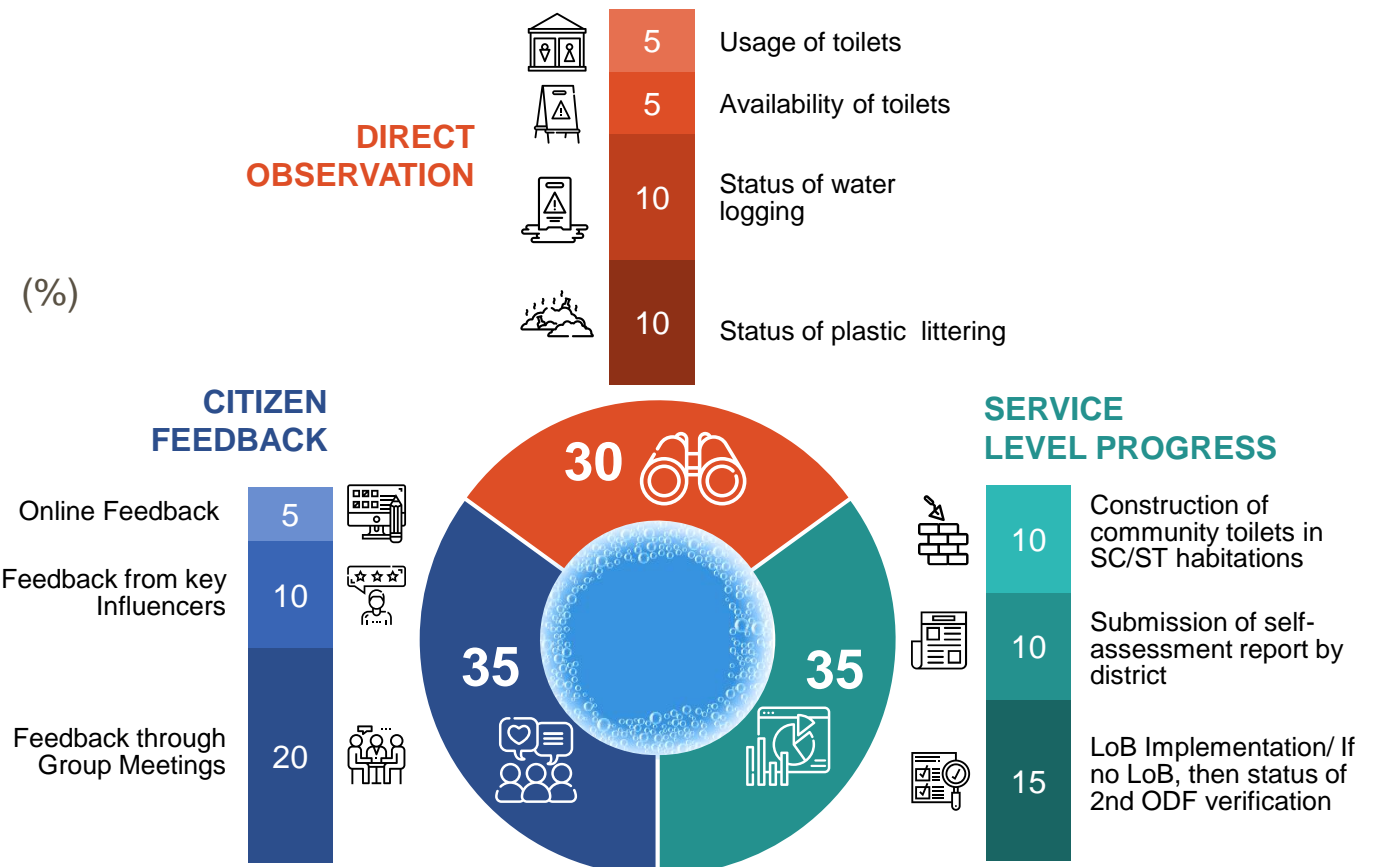
A framework of ranking was chalked out – using a mix of qualitative and quantitative parameters. Districts and states were ranked using the following key indicators for measuring sanitation.



30% weightage was assigned to this component which included validating availability of toilets (5%), usage of toilets (5%), status of water logging (10%) and status of plastic litter (10%) at public places.

35% weightage was assigned to citizen feedback. It had three elements: Online feedback (5%), feedback of key influencers (10%) and feedback from group meetings (20%). Key areas covered were- awareness about SSG, general cleanliness, solid and liquid waste management, media habits and recall of IEC activities on sanitation ODF+ & sustainability & trigger for behavioural change.

Service level progress for districts was assessed using the information available in the IMIS of the DDWS and self-reported data verified by survey agency at district level. Data provided by the districts was validated as per the supporting documents uploaded against claim. The 35% assigned to this component included, construction of community toilet in SC/ST habitation (10%), submission of self-assessment report by districts (10%), left out of baseline implementation/if no LoB then status of 2nd ODF verification (15%).





Between 16<sup>th</sup> and 20<sup>th</sup> September 2019, 1000+ assessors from Ipsos, were engaged to cover 17,209 villages across India, under the SSG. Data was collected using Computer Aided Personal Interviewing (CAPI) devices, which were linked to a real time dashboard. Since CAPI provides time stamps data was constantly monitored for quality with rigorous checks and back checks.

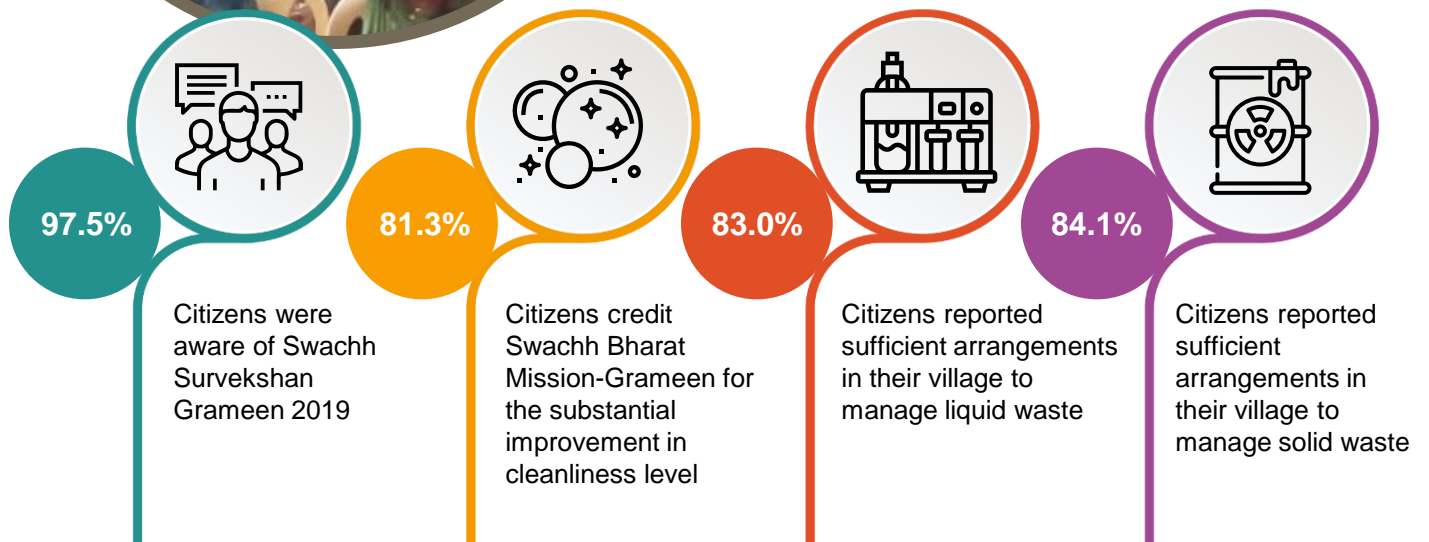
## Key Findings

The ranking was done based on the data collected from the village/district under three major components as mentioned in the previous section, and the findings of the Swachh Survekshan Grameen (SSG), 2019 are provided under the three heads:



## Citizen Feedback

A whopping 97.5% of citizens claimed to be aware of SSG 2019. 81.3% ascribe improvement in rural cleanliness to SBM-G. 84.1% citizens reported efficient solid waste management arrangements which included garbage pits, compost pits and waste collection and disposal pits. 83% citizens claimed efficient disposal of liquid waste in their villages in terms of drains, soak pits kitchen gardens etc.



## Direct Observation

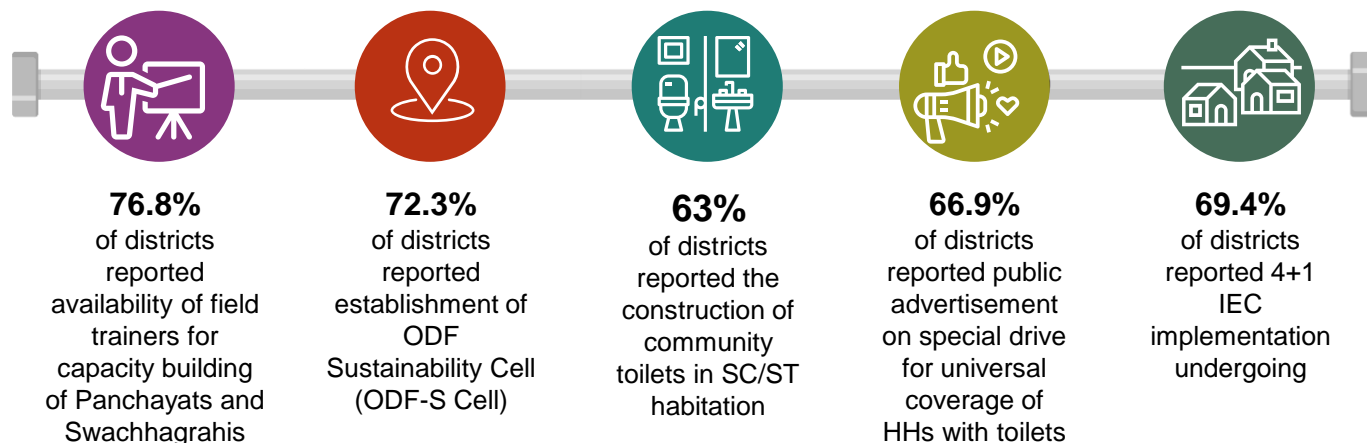
The observation team visited public places like-religious places, haats/ bazaars, health facilities, anganwadi centres, and government schools. The team found that at least 72.5% of public places had access to toilets. 88.7% of the public places observed were free of plastic litter and 92.5% of public places were devoid from stagnant waste water.



## Service Level Progress

Service assessment was self administered submission based and was validated by research partner (Ipsos). 72.3% of the districts reported establishment of ODF Sustainability Cell (ODF-S-Cell). 63% districts reported construction of community toilets in SC/ST habitation. 66.9% of districts reported seeing public advertisements on special drive for universal coverage of households with toilets. 76.8 % of districts claimed to have seen field trainers involved in capacity building of panchayats and swachhagrahis. 69.4% of districts reported seeing 4+1 IEC implementation.

## Service Level Progress (Self Assessment Report)

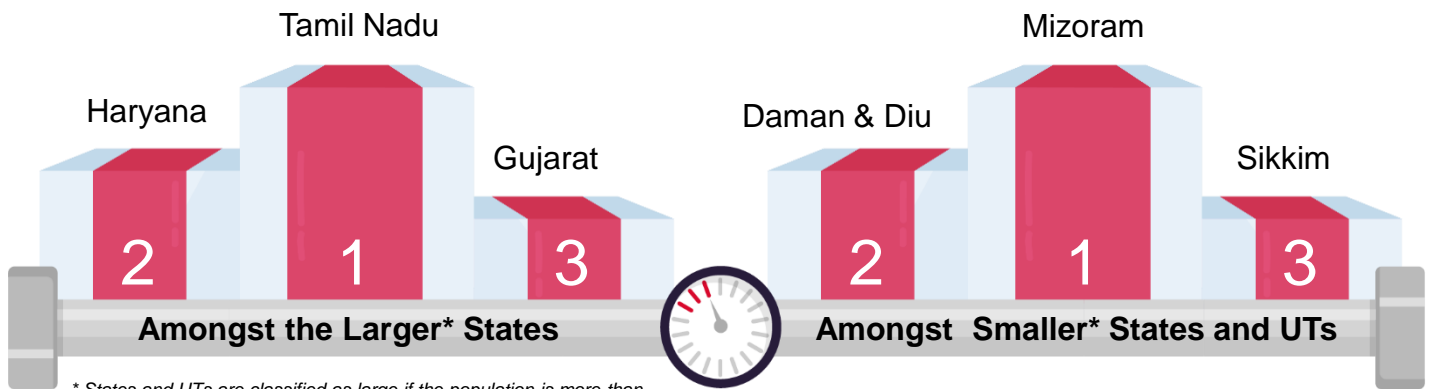




## Top Performers

Ranking was done by taking into account aggregate score of the three components -citizen feedback, direct observation and service level progress. Districts and states that were at the top of the heap: among large states Tamil Nadu bagged the top spot, Haryana came 2nd and Gujarat was 3rd in the pecking order. Among small states Mizoram came up top, followed by Daman & Diu and Sikkim emerged 3rd. The top districts of India were Peddapalli, Faridabad and Rewari.

## Top Three States and UTS



\* States and UTs are classified as large if the population is more than or equal to 30 lakh and small if the population is less than 30 lakh

## Top three districts in the country

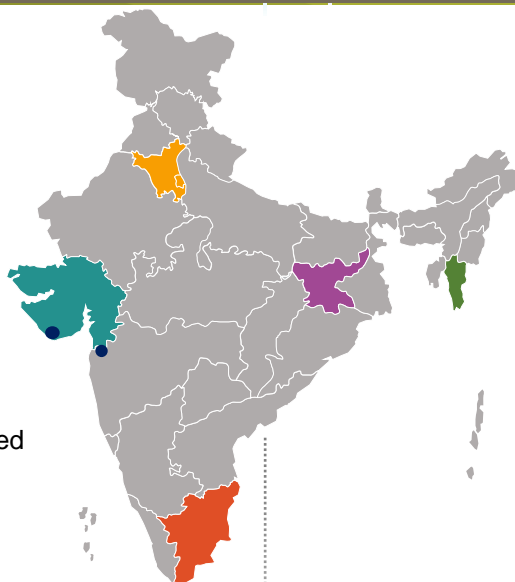


## Top States by Zones and UT

State of Haryana ranked topmost state in **North**

State of Gujarat ranked topmost state in **West**

Daman & Diu is the top ranked **Union Territory**



State of Mizoram ranked topmost state in **North East**

State of Jharkhand ranked topmost state in **East**

State of Tamil Nadu ranked topmost state in **South**

## Citizen Participation Using Mobile

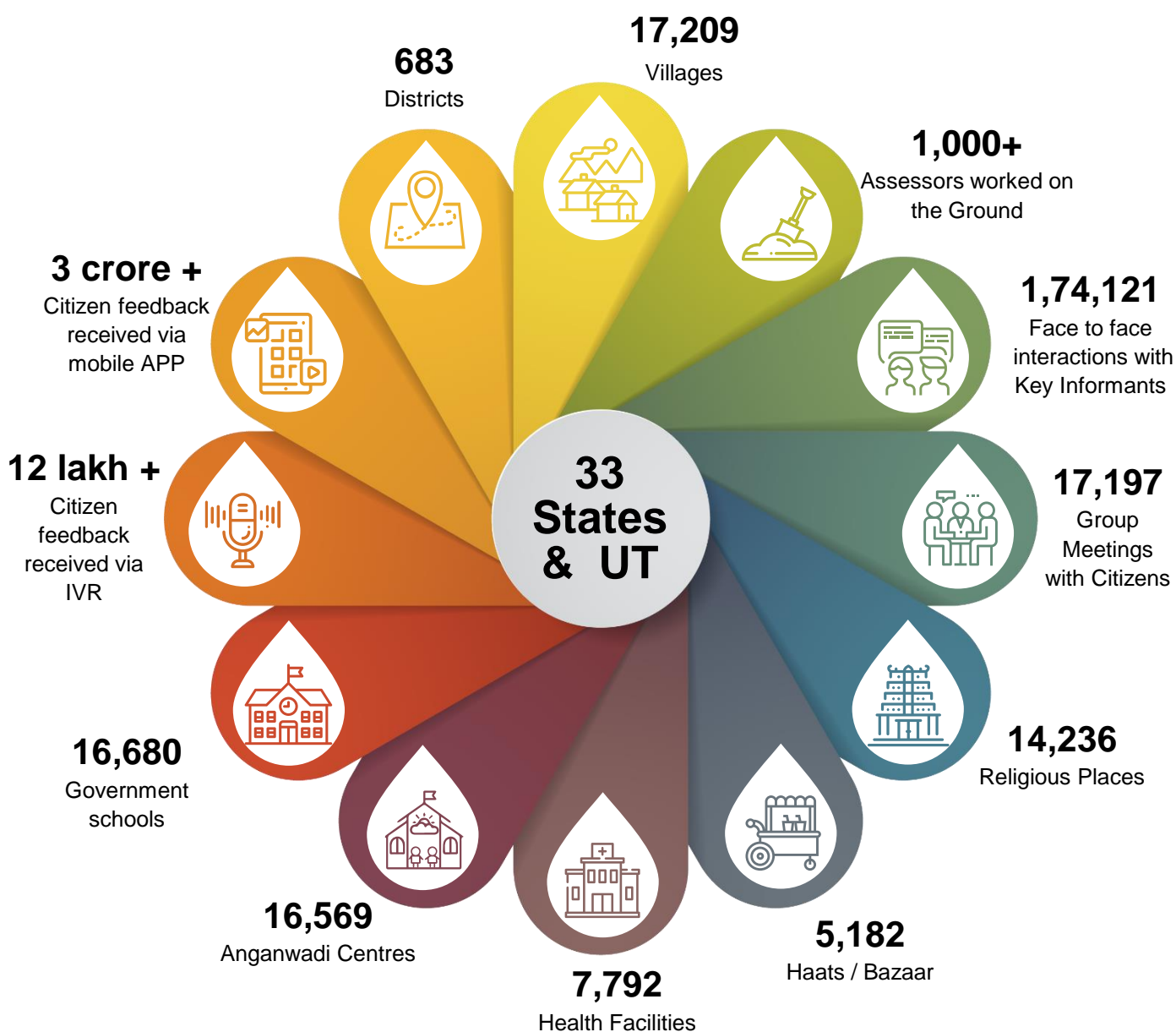
Uttar Pradesh is the state with maximum Participation via Mobile App & IVR

Gorakhpur is the district with maximum participation via Mobile App & IVR

## Coverage and Quality Control

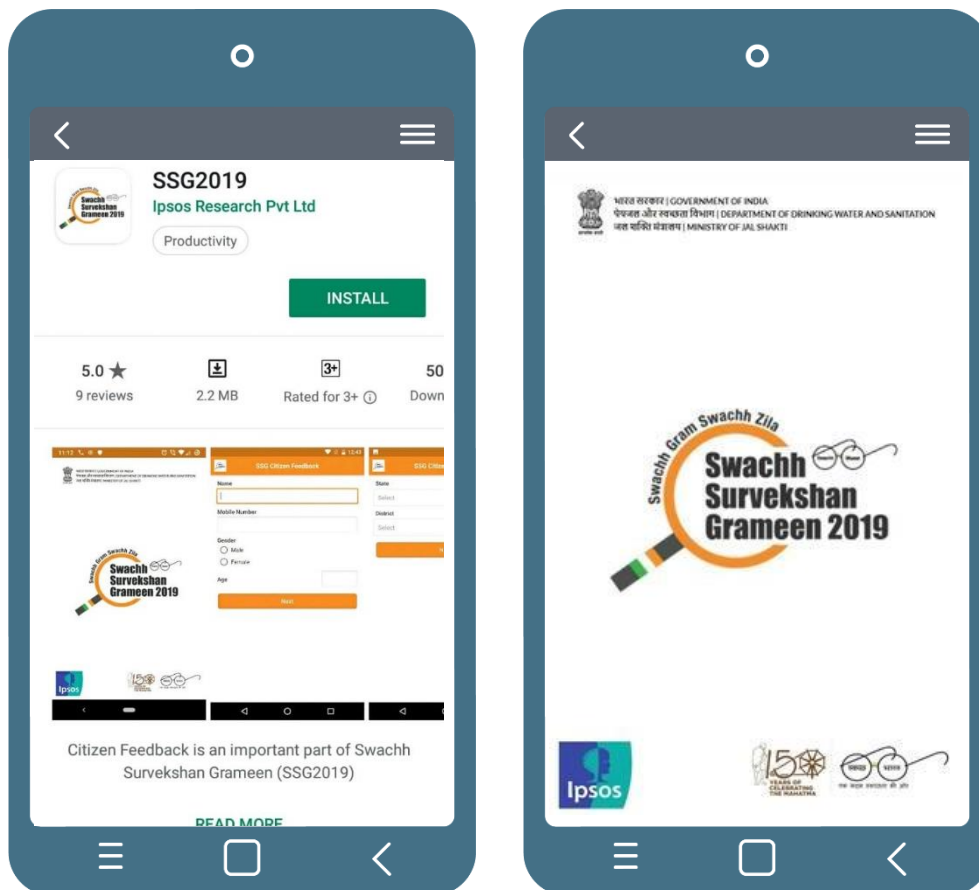
### Coverage

The survey was highly extensive and rigorous in its coverage. Participation of citizens was voluntary and captured honest views. Feedback was garnered from over 3 crore citizens via the mobile app and over 12 lakh people sent their feedback via IVR. 1,74,121 face to face interactions were carried out with key informants to capture village level information and about 17,197 group meetings with citizens were held to capture their perceptions on key indicators.



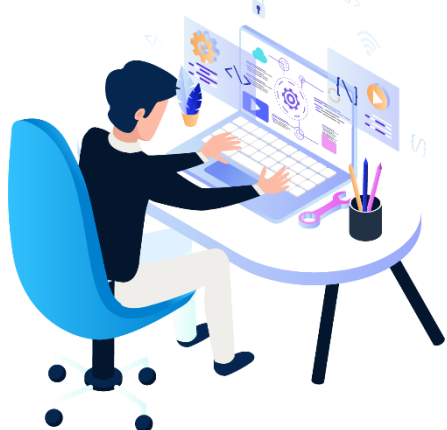
## Swachh Survekshan Grameen - Mobile App

To obtain feedback from citizens beyond the sampled villages an Android app was launched. This facilitated in obtaining online feedback from citizens. Feedback from over 3 crore citizens was received exhibiting their high level of enthusiasm.



## Quality Control

At least 1000+ investigators participated in data collection with close monitoring and control measures to followed at each state of execution.



- Field teams had to go through a rigorous screening process and chosen on the basis of their qualification experience and requisite skill sets for the project.
- CAPI application was tested before the onset of the field work as per the protocol to avoid any errors during the data collection phase
- Standardized training was carried out by core research team for all investigators and supervisors.
- 100% check on the GPS of the sample village was done, to map the coordinates of the investigators during the data collection.
- 100% check on the interviewer selfie at the village was done to authenticating data collection.
- Interviewer was accompanied by the supervisor in 15% of the interviews. 10% back-checks were done by the supervisors.
- 5% targeted back checks were done by the district coordinators.

## Quality Control

**100%** check on the GPS of the sample village

A supervisor accompanied the interviewer in **15%** of the interviews

**10%** back-checks were done by the supervisors

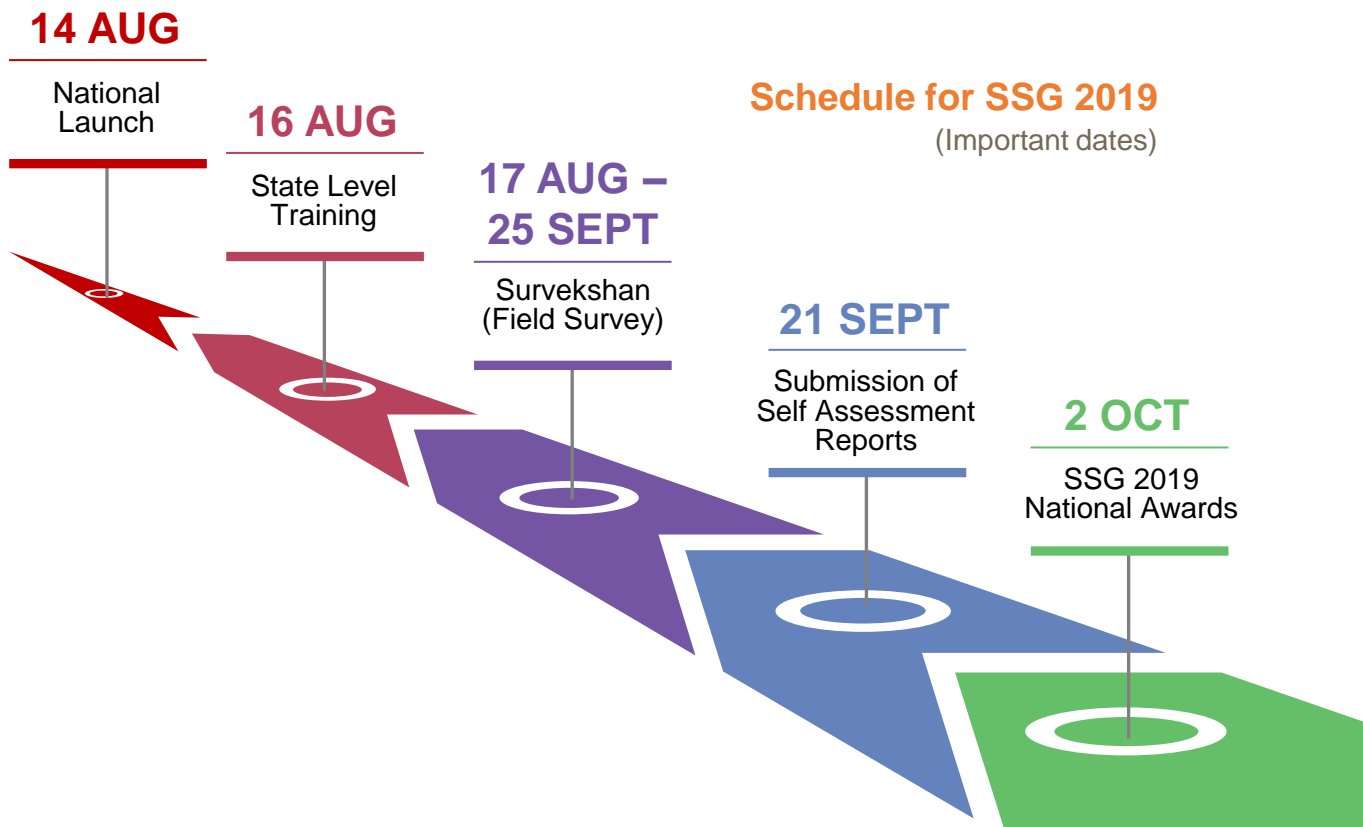


**100%** check on the interviewer selfie at the village

**5%** targeted backchecks were done by the district coordinators

## Survey Milestones

The Swachh Survekshan Grameen 2019 was kicked off on August 14, 2019, and data collection in field was done between September 16-20 September, 2019.



# Introduction

# Chapter 1

# 1. INTRODUCTION

## 1.1 Background

Swachh Survekshan Grameen 2019 is an exercise undertaken by Department of Drinking Water and Sanitation, Ministry of Jal Shakti to rank states and districts on sanitation parameters in 683 districts and 33 states and UTs. In order to rank the districts and states the Swachh Survekshan was undertaken in 17209 villages.

The Survekshan generated enthusiasm and participation across the country. It received acceptance and attention of all stakeholders and citizens in particular. Over three crore citizens provided direct feedback on various sanitation parameters in their villages and districts, using the Swachh Survekshan app developed by the ministry. Intense IEC and sanitation improvement activities were carried out by people to enhance the sanitation status of their villages. SSG 2019 also fostered a spirit of healthy competition among villages leading to marked improvement in service delivery to citizens towards creating cleaner villages.

The program is considered India's biggest drive to improve sanitation, hygiene and cleanliness. The effectiveness of the program is predicated upon generating demand for toilets, leading to their construction, and sustained use by all the household members. It also aims to promote better hygiene behaviour amongst the population and improve cleanliness by initiating Solid and Liquid Waste Management (SLWM) projects in the villages of India.

The emphasis was on behaviour change, including a strong focus on interpersonal communication, at the same time strengthening implementation and delivery mechanisms, down to the GP level and giving states flexibility of design delivery mechanisms, that take into account local cultures, practices, sensibilities and demands. In addition, the program focused on capacity building at state, district and GP level.



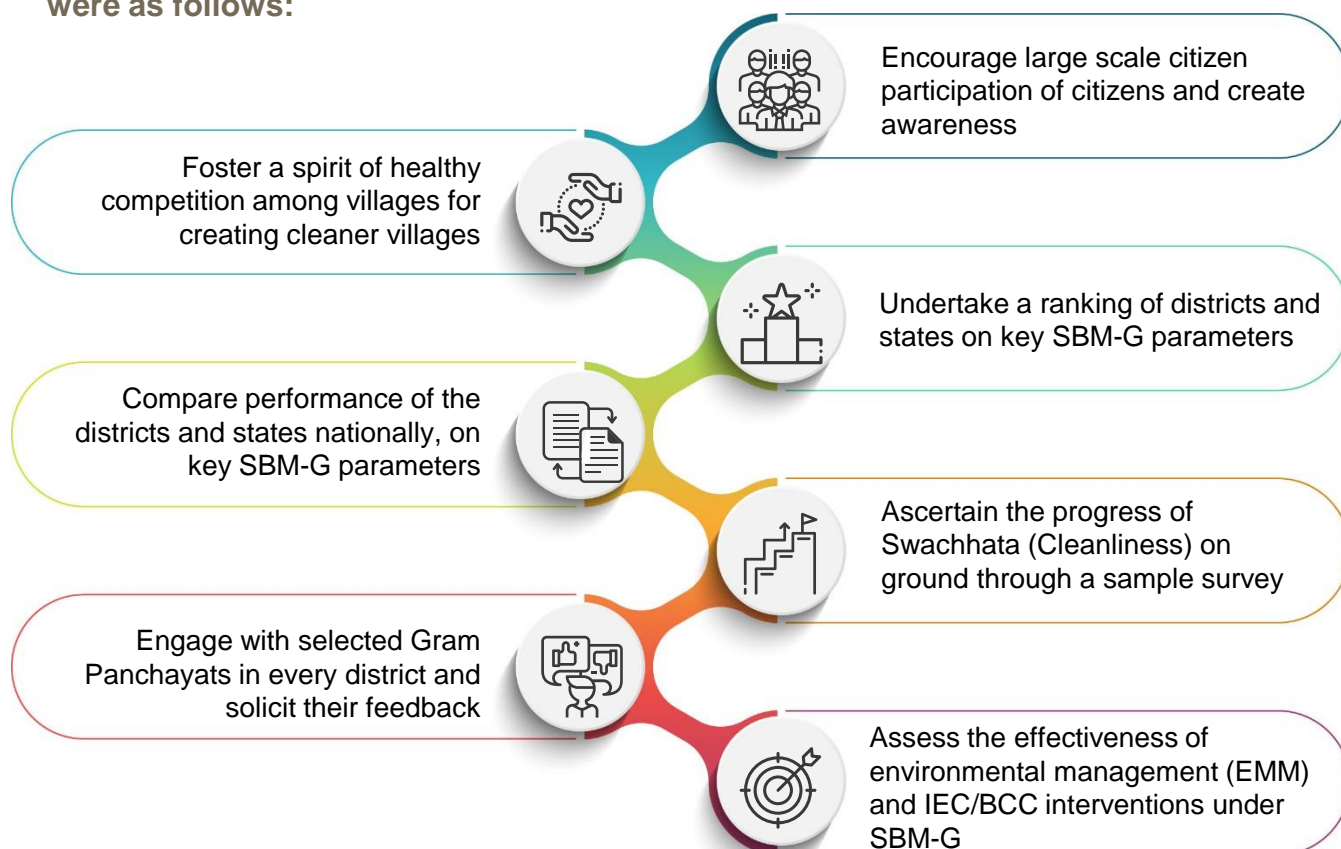
The Swachh Survekshan was launched nationally on August 14, 2019 -and then in every state. Survey teams visited 683 districts, 17,209 villages in 33 states and union territories.

## 1.2 Objectives



The Department of Drinking Water and Sanitation, Ministry of Jal Shakti (DDWS) hired a third party research agency, Ipsos- a global market research company, to undertake “Swachh Survekshan Grameen- in year 2019 and also signed up for the year 2020 to provide national ranking of all districts and States of India on the basis of quantitative and qualitative sanitation (swachhata) parameters. The ranking was based on a comprehensive set of parameters which included self-reporting by districts, data from the SBM-G IMIS, village-level surveys of public places like schools, anganwadis, PHCs, haat bazaars, panchayat and citizen’s perception of swachhata and their recommendations for improvement of the program.

**Specific objectives of assessment under Swachh Survekshan Grameen were as follows:**



# National Highlights

# Chapter 2



## 2. NATIONAL HIGHLIGHTS

The Swachh Survekshan Grameen has been found to be a very effective tool to generate healthy competition amongst villages, districts and states on swachhata. It has been hugely successful in mobilizing community collective action on sanitation and has resulted in noticeable improvement in general cleanliness of the village environment.

### 2.1 Highlights of Citizen Feedback, Service Level Progress and Direct Observation

#### 2.1.1 Citizen Feedback

Citizen feedback was obtained for certain key indicators, and it was observed that 97.5% citizens who participated in the survey were aware of the Swachh Survekshan Grameen 2019. 81.3% citizens think that there is a substantial improvement in the cleanliness level of their village due to Swachh Bharat Mission-Grameen. Upon asked about the arrangement to manage solid and liquid waste in their village, 83% citizens reported adequate arrangements in their village to manage liquid waste and 84.1% citizens reported adequate arrangements in their village to manage solid waste.

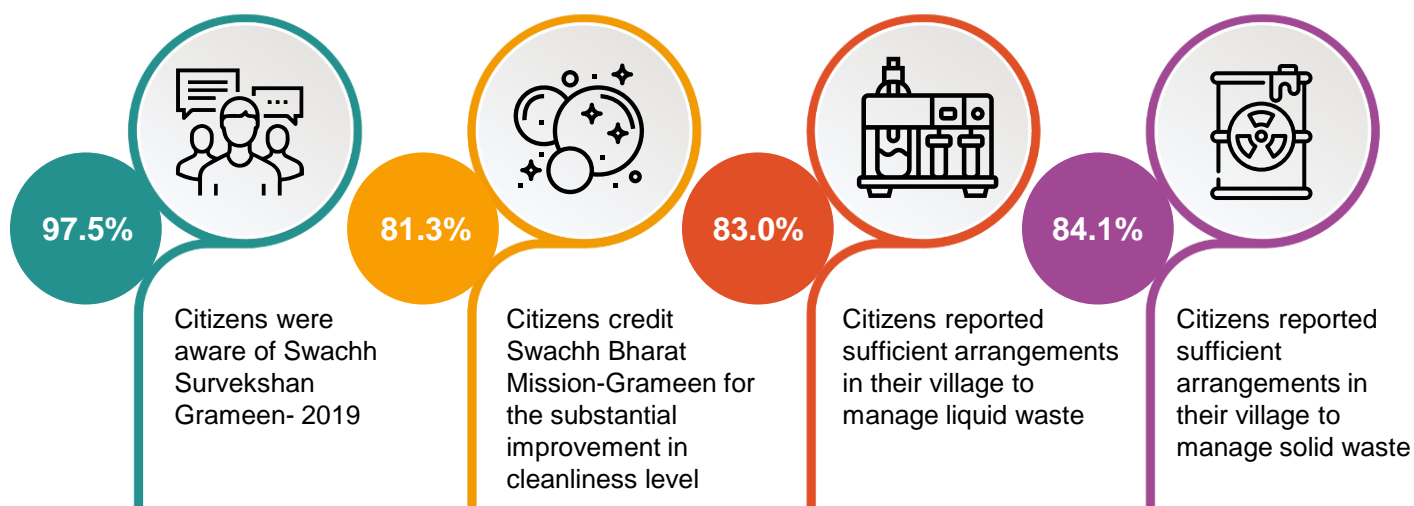
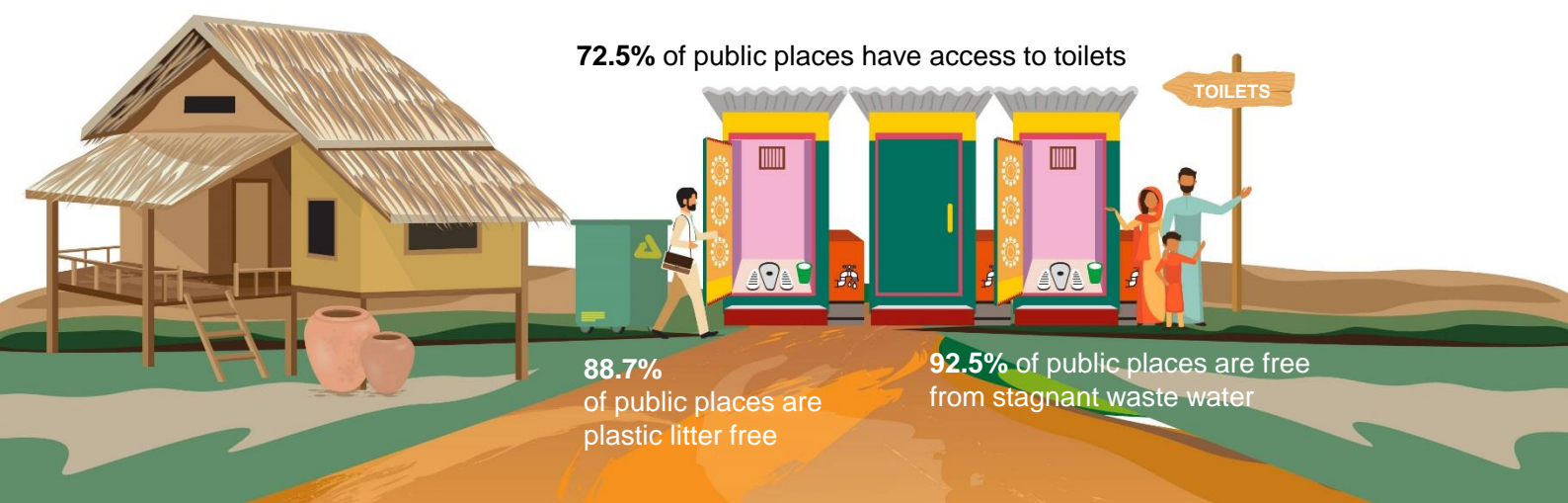


Figure 2: Citizen Feedback

#### 2.1.2 Direct Observation

The investigators from Ipsos visited the sample villages to observe and validate the conditions of cleanliness and availability of the toilets. It was observed that 72.5% of the public places had access to toilets, 88.7% of public places were plastic litter free and 92.5% of public places were free from stagnant waste water.



## 2.1.3 SERVICE LEVEL PROGRESS (SELF-ASSESSMENT BY DISTRICTS)

The districts were required to submit the self-assessment report on initiatives taken by them to improve the conditions of the village on Swachhata. 78% of the districts reported availability of field trainers for capacity building of Panchayats and Swachhagrahis. 72.3% of districts reported establishment of ODF Sustainability Cell (ODF-S Cell), 63% of districts reported the construction of community toilets in SC/ST habitation and 69.4% of districts reported 4+1 IEC implementation undergoing.

### Service Level Progress (Self Assessment Report)

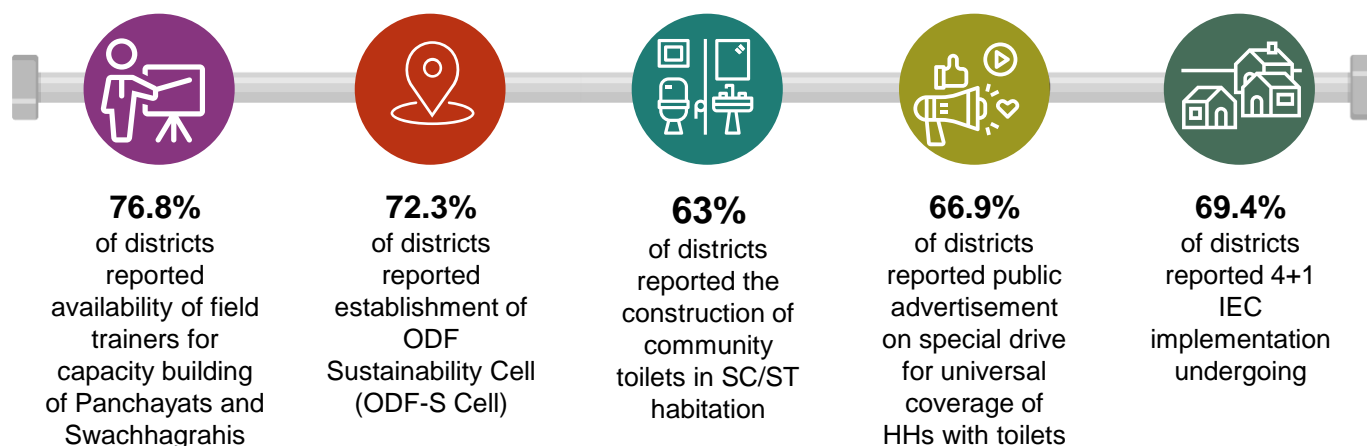


Figure 4: Service Level Progress

## 2.2 Top Ranked States and Districts (Based on Total Score)

Ranking for states, districts and villages was done based on their aggregate scores in the following three components covered under SSG-19. The weights were assigned to different elements of the SSG 2019 to a total of 100.

- Direct Observation of sanitation public places -30%
- Citizen's Feedback including feedback from common citizens, key influencers at the village level and from citizens online using a mobile App -35%
- Service Level Progress on sanitation related parameters -35%

Table 1: Top three Larger States (>30 Lakh Population)

Rank	Larger States	Scores
1	Tamil Nadu	83.54
2	Haryana	81.86
3	Gujarat	77.98

Table 1: Top three smaller States /UTs categorization (< 30 Lakh Population)

Rank	Smaller States and Union Territories	Scores
1	Mizoram	81.02
2	Daman & Diu	76.32
3	Sikkim	75.51

**Table 3: Table Top three Districts**

Rank	Districts	Scores
1	Peddapalli	89.0864
2	Faridabad	89.0861
3	Rewari	89.0185

**Table 4: Top States: By zones and Union Territories**

Zones/UTs	Top State	Scores
<b>Southern</b>	Tamil Nadu	83.54
<b>Northern</b>	Haryana	81.86
<b>Eastern</b>	Jharkhand	76.69
<b>Western</b>	Gujarat	77.98
<b>North-East</b>	Mizoram	81.02
<b>Union Territories</b>	Daman & Diu	76.32

## 2.3 Ranking Based on App and IVR Response (Absolute Number)

**Table 5: Top State in app & IVR response:**

No.	State	Total Responses
1	Uttar Pradesh	1,54,49,114

**Table 6: Top State in app & IVR response:**

No.	District	Total Responses
1	Gorakhpur	1380005

## 2.4 The Zone Wise Results of SGG 2019

**Table 7: Top 3 States (Zone Wise)**

Zones/UTs	State Rank-1	Scores	State Rank-2	Scores	State Rank-3	Scores
<b>Southern</b>	Tamil Nadu	83.54	Telangana	73.38	Kerala	71.35
<b>Northern</b>	Haryana	81.86	Uttar Pradesh	75.55	Uttarakhand	72.91
<b>Eastern</b>	Jharkhand	76.69	Chhattisgarh	67.90	West Bengal	59.52
<b>Western</b>	Gujarat	77.98	Maharashtra	68.98	Madhya Pradesh	66.74
<b>North-East</b>	Mizoram	81.02	Sikkim	75.51	Arunachal Pradesh	61.76
<b>Union Territories</b>	Daman & Diu	76.32	D&N Haveli	66.92	Puducherry	62.02

**Table 8: Top 3 Districts (Zone Wise)**

Zones/UTs	State Rank-1	Scores	State Rank-2	Scores	State Rank-3	Scores
<b>Southern</b>	Peddapalli	89.08	Thoothukudi	88.12	Dindigul	87.71
<b>Northern</b>	Faridabad	89.08	Rewari	89.01	Mahendragarh	88.56
<b>Eastern</b>	Khunti	84.05	Dumka	83.91	Simdega	83.65
<b>Western</b>	Patan	88.86	Mahisagar	87.61	Panch Mahals	86.83
<b>North-East</b>	Kolasib	85.21	Serchip	83.60	Aizwal	83.17
<b>Union Territories</b>	Daman	80.91	Diu	71.72	D&N Haveli	66.91

# Survey Design

# Chapter 3

## 3. SURVEY DESIGN

### 3.1 Components of Swachh Survekshan Grameen 2019

Keeping the survey objectives in mind, the survey adopted a mixed-method approach and had quantitative as well as qualitative modules for assessment. The survey was based on primary data collection using a structured interview tool for direct observations of public places and face to face interviews with key stakeholders of villages and citizens, also secondary data collection from IMIS of SBM-G. The following components were covered in the study. Figure 5 and Figure 6 provide the summary of the different components.

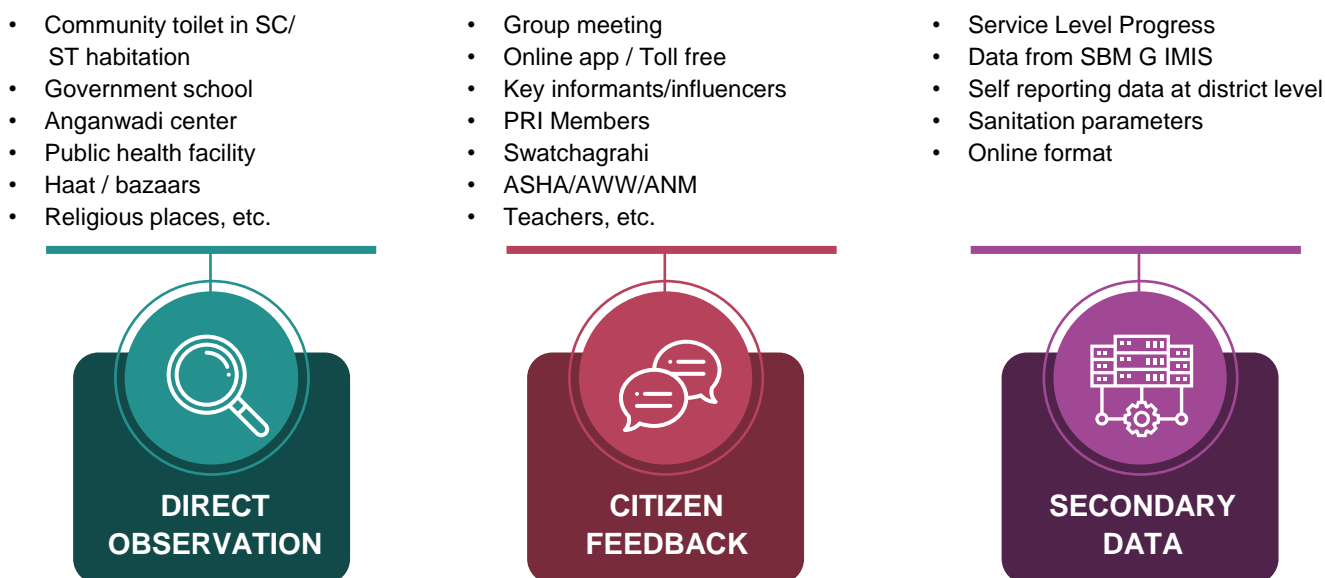


Figure 5: Components of SSG 2019-2020 for Ranking

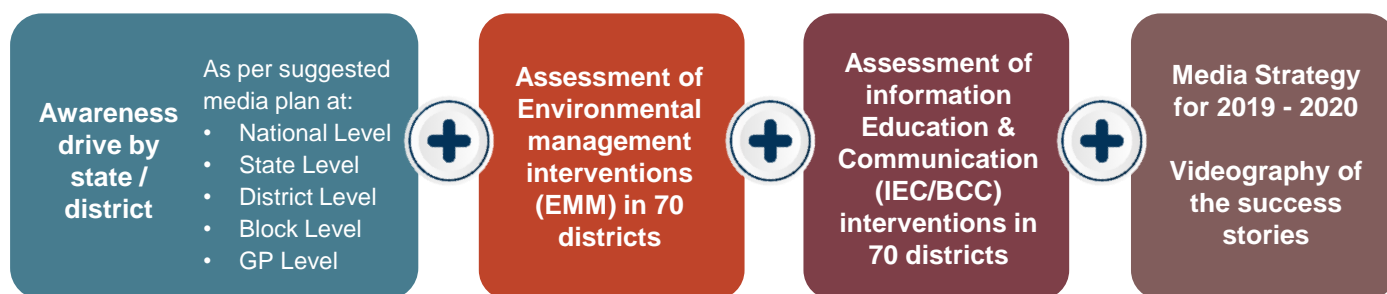


Figure 6: Components of SSG 2019-2020 for Ranking

\*Findings of IEC and EMM will be reported separately

### 3.2 Data Collection Method

Data was collected using following methods:



Figure 7: Data Collection Methods

### 3.3 Sample Design

#### Selection of Districts

Recent IMIS database 2019 of all the villages with their household population, was collected for each district of India to make a comprehensive sampling frame. All districts with rural population was covered in the study and thus there was no sampling at the district level. However, there were few exclusions for reasons mentioned below.

- Chandigarh district was excluded from state ranking as survey could not be done due to urbanization of all the villages
- 14 districts of Jammu & Kashmir were excluded from ranking as survey could not be completed due to unavoidable circumstances

#### Selection of Villages



**17475**  
villages

17475 villages were estimated to be covered in the study. Step 1 and 2, below describe the approach that was taken for allocation and selection of villages in the district :

##### Step 1

Districts were divided into three stratum and villages were allocated as per the cap of minimum 20 and maximum 30 villages:

- Districts with less rural population (cap range: 20-22 villages)
- District with moderate rural population (cap range: 23-26 villages)
- Districts with high rural population (cap range: 27-30 villages)

##### Step 2

In each district, the required number of villages were selected using Probability Proportional to Size (PPS) sampling method.

### 3.4 Sample Coverage

As part of Swachh Survekshan Grameen 17475 villages in 698 districts across India were planned to be covered. 87,375 public places namely schools, anganwadis, Public Health Centres, haat/ bazaars, religious places in these 17,475 villages were planned to be visited for survey. Around 6,00,000 citizen interviews were planned for the feedback on SBM related issues. Also, citizens were mobilised to provide feedback on sanitation related issues, using online mobile app and through call centres using toll-free number. The figure below indicates the original planned coverage.

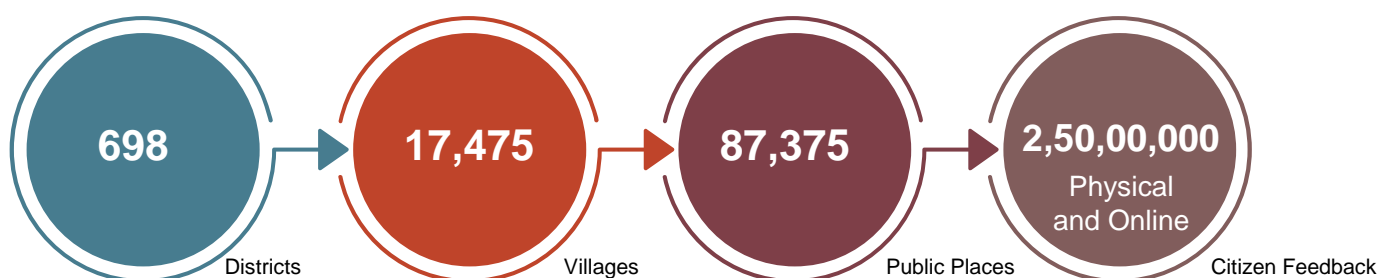


Figure 8: Planned Sample Coverage

Figure summarizes the overall coverage post completion of the survey.

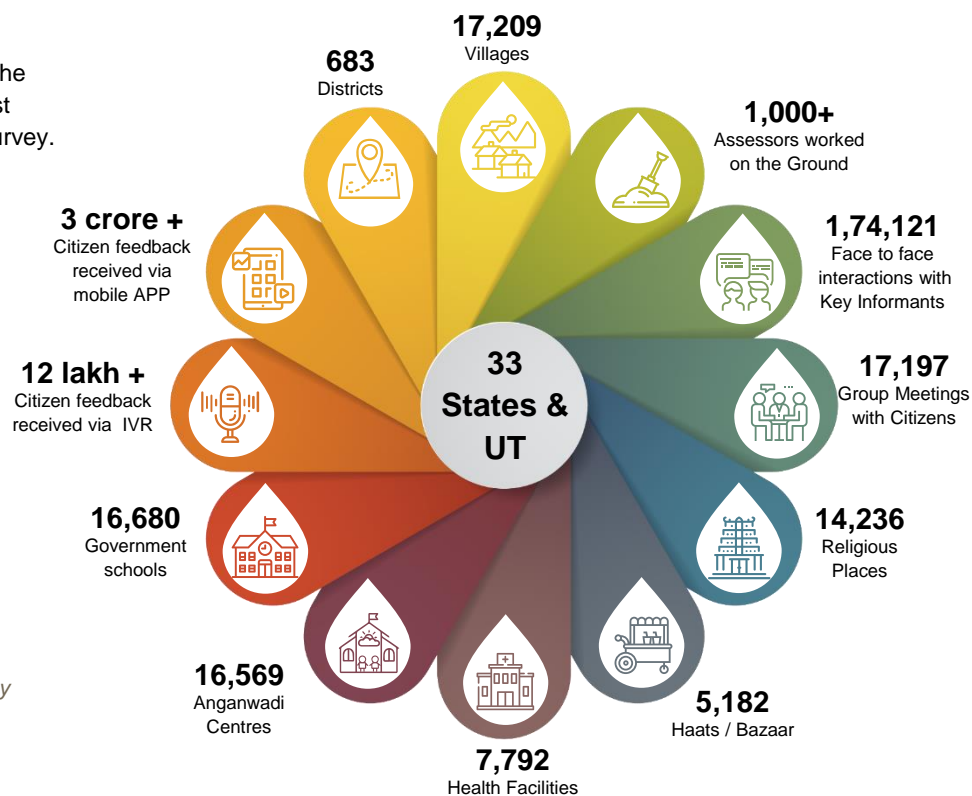


Figure 9: Actual Coverage of the Survey

Table 9: State wise distribution of districts and villages surveyed

State Name	Number of districts surveyed	No of Villages Surveyed
A & N Islands	3	59
Andhra Pradesh	13	378
Arunachal Pradesh	20	440
Assam	33	807
Bihar	38	1051
Chandigarh	0	0
Chhattisgarh	27	662
D & N Haveli	1	22
Daman & Diu	2	24
Goa	2	46
Gujarat	33	797
Haryana	22	513
Himachal Pradesh	12	285
Jammu & Kashmir	8	182
Jharkhand	24	584
Karnataka	30	766
Kerala	14	377
Madhya Pradesh	51	1267
Maharashtra	34	912
Manipur	16	363
Meghalaya	11	247
Mizoram	8	176
Nagaland	11	244
Odisha	30	787
Puducherry	2	45
Punjab	22	521
Rajasthan	33	879
Sikkim	4	88
Tamil Nadu	31	824
Telangana	30	716
Tripura	8	184
Uttar Pradesh	75	2035
Uttarakhand	13	306
West Bengal	22	622
<b>Total</b>	<b>683</b>	<b>17209</b>

The table shows the actual number of districts and villages covered in the survey.

# Assessment and Ranking Methodology

## Chapter 4



## 4. ASSESSMENT AND RANKING METHODOLOGY

### 4.1 Methodology for Ranking of Districts

A detailed protocol was developed to guide in the ranking of districts basis their performance on key qualitative and quantitative parameters. The ranking was done using information on service level progress obtained from the Integrated Management Information System (IMIS) of Department of Drinking Water and Sanitation, survey of public places, undertaken by the teams of survey agency (Ipsos) using standard observation parameters and citizen feedback from the villages and also online using an app developed for the purpose.

65% weightage was assigned to the findings and outcome from the Survekshan and 35% to the service level parameters which was obtained from the IMIS of the DDWS. The weights to different elements of the SSG was as follows:



Figure 10: Ranking Weights



**Direct Observation** of sanitation in public places (30%)



**Citizen Feedback** including feedback from common citizens, key influencers at the village level and from citizens online using the app (35%)



**Service Level Progress** on sanitation related parameters (35%)

#### 4.1.1 Direct Observation- 30 Marks

**Direct Observation (On-field independent observation and Collection of data):** The collection of data from Direct Observation was based on physical observation of the survey agency. A questionnaire was used as the tool for observation and data collection. Ipsos facilitated its investigators with maps and simple handheld device/ recording formats to record their observations and findings along with photographs/videos, wherever necessary. Ipsos investigators systematically collected photos as evidence for field observations. These were properly documented with date/ time/ geo location parameters and were uploaded to the server on real time basis, and dashboard access was provided to all key stakeholders in the survey.

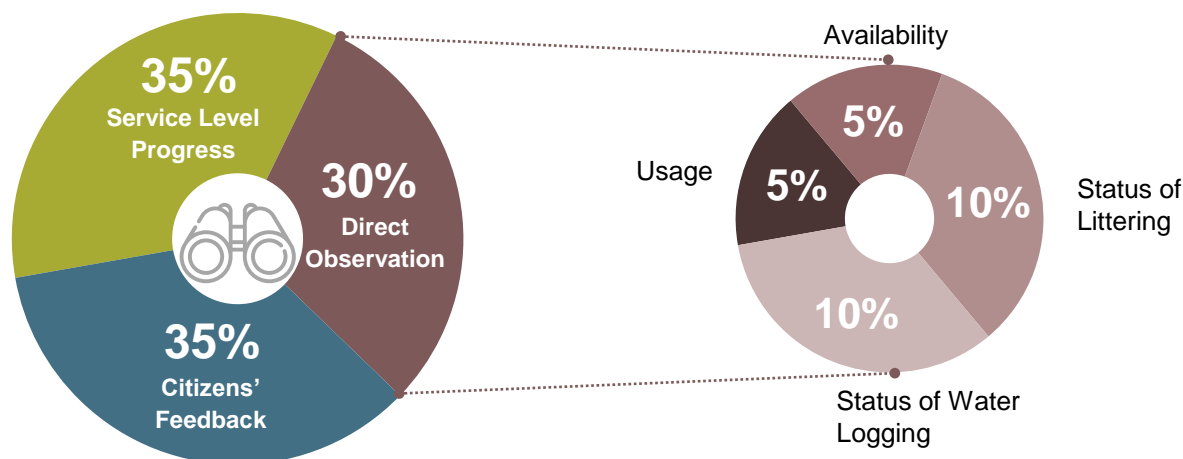


Figure 11: Direct Observation Marks

As a part of direct observation, Ipsos investigators visited the following places in each of the selected village:

- School in the village
- Community toilet in SC/ST habitation
- Anganwadi centre in the village
- Public Health centre in the village
- Haats/ bazaar in the village
- Religious places e.g. temple/ church/ mosque etc.
- Any other agreed in the protocol



Figure 12: Public Places Visited

Ipsos investigators observed the following as part of survey of the above-mentioned public places:



## Weighting

Table 10: Availability of sanitation services: (5 Marks)

Scheme of Ranking	Weight
All five public places have toilets	5
Four public places have toilets	4
Three public places have toilets	3
Two public places have toilets	2
One public place has toilets	1
None of the public places have toilets	0

Table 11: Usage of sanitation services: (5 Marks)

Scheme of Ranking	Weight
Toilet(s) in all five public places are in use	5
Toilet(s) in all four public places are in use	4
Toilet(s) in all three public places are in use	3
Toilet(s) in all two public places are in use	2
Toilet(s) in all one public place are in use	1
Toilet(s) in none of the public places are in use	0

## Weighting

**Table 12: Status of littering in the public place: (5 Marks)**

Scheme of Ranking	Weight
Minimal general littering and absence of heap of plastics in all five public places	10
Minimal littering and absence of heap of plastics in four public places	8
Minimal littering and absence of heap of plastics in three public places	6
Minimal littering and absence of heap of plastics in two public places	4
Minimal littering and absence of heap of plastics in one public place	2
No public place with minimal littering and absence of heap of plastics	0

**Table 13: Status of stagnant Water in the public place: (5 Marks)**

Scheme of Ranking	Weight
Minimal water logging in all five public places	10
Minimal water logging in all four public places	8
Minimal water logging in all three public places	6
Minimal water logging in all two public places	4
Minimal water logging in all one public place	2
No public place with minimal water logging	0

**Table 14: Direct observation score calculation**

Scheme of Ranking	Weight
<b>Availability of sanitation services</b>	A
<b>Usage of sanitation services</b>	B
<b>Status of Littering</b>	C
<b>Status of stagnant Water</b>	D
Overall Score at village level	A + B + C + D
Overall Score at district level	$\frac{\text{Sum of score of each village surveyed in a district}}{\text{Total number of villages surveyed in a district}}$
Overall Score at state level	$\frac{\text{Sum of score of each village surveyed in a state}}{\text{Total number of villages surveyed in a state}}$

## 4.1.2 Citizen's Feedback – 35 Marks

Three distinct approaches were used to collect citizen's feedbacks under the assessment namely Online Feedback, Feedback from key influencers and feedback through group meeting. The data was collected on awareness about SSG, perception on general cleanliness, perception on arrangements for solid and liquid waste, media habits, reach and recall to any IEC activities related to sanitation, opportunity for ODF+ and its sustainability and what triggered to change their behaviour.

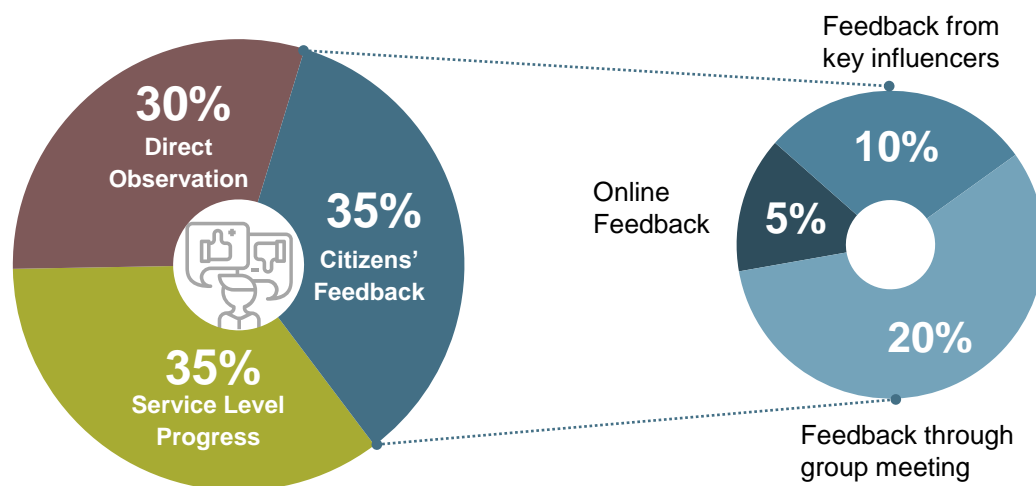


Figure 13: Citizen Feedback Marks

## Calculation of scores

The maximum for group meeting score was 20 marks and it was calculated as follows:

The survey agency with support from GP functionaries organised a community meeting in each village. This meeting with citizens was used for informing them on the elements of SSG-2019, purpose of data collection and direct observation and obtaining consent and time for FGDs and Personal Interviews. A general discussion on implementation of SBM-G in the village was facilitated in the village by the survey agency. The items that were discussed in the village meeting included:

- General cleanliness in the village
- Measures being taken to safely dispose solid waste
- Measures being taken to safely dispose liquid waste
- Innovation in solid and liquid waste management
- Effectiveness of IEC interventions
- Recall of IEC interventions
- Impact of IEC interventions
- Environmental management arrangements in the village
- Status of Water Quality
- Decrease in incidence of diarrhoea and other disease
- Any faults in toilet design
- Resilience of toilets

## Approach-1 Group Meeting – 20 Marks

Group meetings were conducted to gather the feedback from a group of participants. 25 or more participants from each village were recruited to collect the feedback on various aspects. One FGD was conducted in each village. The survey agency deployed high calibre personnel to facilitate FGDs and captured the key elements of the FGD in the handheld device (tablet). Qualitative information were quantified using QIS techniques.

## Weighting

Allocation of weights against various parameters were mentioned below in the table.

**Table 15: Allocation of weights for Group Meeting**

Parameters	Scheme of Ranking	Weight
Awareness about Swachh Survekshan Grameen	Yes	2
	No	0
Has the general cleanliness of your village improved with implementation of SBM?	Yes- Substantial improvement-no complaints	6
	Yes- Cleaner than last year	4
	Yes- Slightly better than last year	3
	No change	1
Has the village made arrangements for safe disposal of solid waste?	Yes- Sufficient to manage all the waste of the village	6
	Yes- But not sufficient to manage all the waste of the village	4
	Yes-Only for some household level arrangement exists	2
	No arrangement	0
Has the village made arrangements for liquid waste?	Yes- Sufficient to manage stagnation in public places of the village	6
	Yes- But not sufficient to manage stagnation in all the public places of the village	4
	Yes- Some arrangement at household level exists	2
	No arrangement	0

## Calculation of scores

The maximum score for group meeting was 20 marks and it was calculated as follows:

Number of Citizen	Selected Option	Option Weight	Scoring Method for group meeting – 20 Marks
<b>A</b>	1	$\alpha$	$A \times \alpha = A\alpha$
<b>B</b>	2	$\beta$	$B \times \beta = B\beta$
<b>C</b>	3	$\gamma$	$C \times \gamma = C\gamma$
<b>Overall Score at village level</b>	$\frac{(A\alpha + B\beta + C\gamma)}{\text{Total number of Citizens participated}}$		
<b>Overall Score at district level</b>	$\frac{\text{Sum of score of each village surveyed in a district}}{\text{Total number of villages surveyed in a district}}$		
<b>Overall Score at state level</b>	$\frac{\text{Sum of score of each village surveyed in a state}}{\text{Total number of villages surveyed in a state}}$		

## Approach-2 Feedback from Key Informants – 10 Marks

Different set of stakeholders were interviewed (face to face interview) to understand their awareness on SSG-2019, IEC activities undertaken and management of solid and liquid waste in their village. Also, feedback was collected on IEC/BCC and EMM activities conducted in the village and the initiatives undertaken.

The list of all available key informants in the village was prepared, out of which 8 to 10 key informants from each village were interviewed. The key informants interviewed for the survey in priority order included gram pradhan, sarpanch, panchayat secretary, swachhagrahi, anganwadi worker, ASHA, ANM, school teacher, sanitation committee members, village health sanitation and nutrition committee members (VHSNC), Self-help group members, community leaders, religious leaders, community based organization (CBO), youth volunteer committee, farmer association, local doctors, mahila mandal, members of nigrani samiti etc.

## Weighting

Table 17: Weights assigned to Key Informant Feedback

Parameters	Scheme of Ranking	Weight
Awareness on Swachh Survekshan Grameen	Yes	1
	No	0
IEC activities conducted in the village MULTIPLE ANSWERS	Community Triggering	1
	Wall painting/writing in village/ school	1
	Samiti formation	1
Availability of liquid waste management arrangements in the village MULTIPLE ANSWERS	Availability of drains	1
	Availability of soak pits	1
	Availability of kitchen garden or ponds	1
Availability of solid waste management arrangement in the village MULTIPLE ANSWERS	Availability of garbage pit	1
	Availability of Compost Pit	1
	Availability of waste collection & disposal arrangement	1

## Calculation of scores

The maximum score for key influence feedback was 10 marks and it was calculated as follows:

Table 18: Calculation of scores for key informant feedback

Number of influencers	Selected Option	Option Weight	Scoring Method for key informant – 10 Marks
A	1	$\alpha$	$A \times \alpha = A\alpha$
B	2	$\beta$	$B \times \beta = B\beta$
C	3	$\gamma$	$C \times \gamma = C\gamma$
Overall Score at village level			$(A\alpha + B\beta + C\gamma)$ Total number of Key influencers interviewed
Overall Score at district level			$\frac{\text{Sum of score of each village surveyed in a district}}{\text{Total number of villages surveyed in a district}}$
Overall Score at state level			$\frac{\text{Sum of score of each village surveyed in a state}}{\text{Total number of villages surveyed in a state}}$

## Approach - 3 Online Feedback Using App and Toll - Free Number - 5 Marks

To obtain feedback from citizens beyond the sampled villages, Swachh Survekshan Grameen facilitated citizens to provide online feedback using android App and toll-free number. The scores for online response for a district was calculated using the following parameters and weights:

### Weighting

**Table 19: Scheme of Ranking for Online Feedback and Toll Free Number**

Scheme of Ranking	Weight
More than 5% of individuals respond in the district	5
3-5% of individuals respond in the district	3
1-3% of individuals respond in the district	1
Less than 1% of individuals respond in the district	0

### Calculation of scores

The individual feedback received using online app / toll free number was maximum 5 marks and was calculated twice as follows:

**Table 20: Score calculation using 'citizen's feedback weight' as defined under group meeting**

Number of Citizen	Selected Option	Option Weight	Scoring Method for individual feedback – 20 Marks
A	1	$\alpha$	$A \times \alpha = A\alpha$
B	2	$\beta$	$B \times \beta = B\beta$
C	3	$\gamma$	$C \times \gamma = C\gamma$
<b>Overall Score at district level</b>			$(A\alpha + B\beta + C\gamma)$ Total number of Citizens participated
<b>Overall Score at state level</b>			$\frac{\text{Sum of score of each district surveyed in a state}}{\text{Total number of districts surveyed in a state}}$

**Table 21: Score calculation using 'citizen's feedback weight' as defined under group meeting**

Score Calculation at district level	Score – 5 Marks
More than 5% of individuals respond in the district	5
3-5% of individuals respond in the district	3
1-3% of individuals respond in the district	1
Less than 1% of individuals respond in the district	0
Score Calculation at district level	Score
Average of district level score within the state	.....

### 4.1.3 Service Level Progress- 35 Marks

Service level progress at the district level was assessed using information available in the IMIS of the DDWS and self-reported data verified by survey agency at district level. An online self-reporting format was developed and hosted at SSG 2019 website wherein District level office was asked to update their progress on key sanitation parameters. Data provided by the districts was validated as per the evidence uploaded against claim.

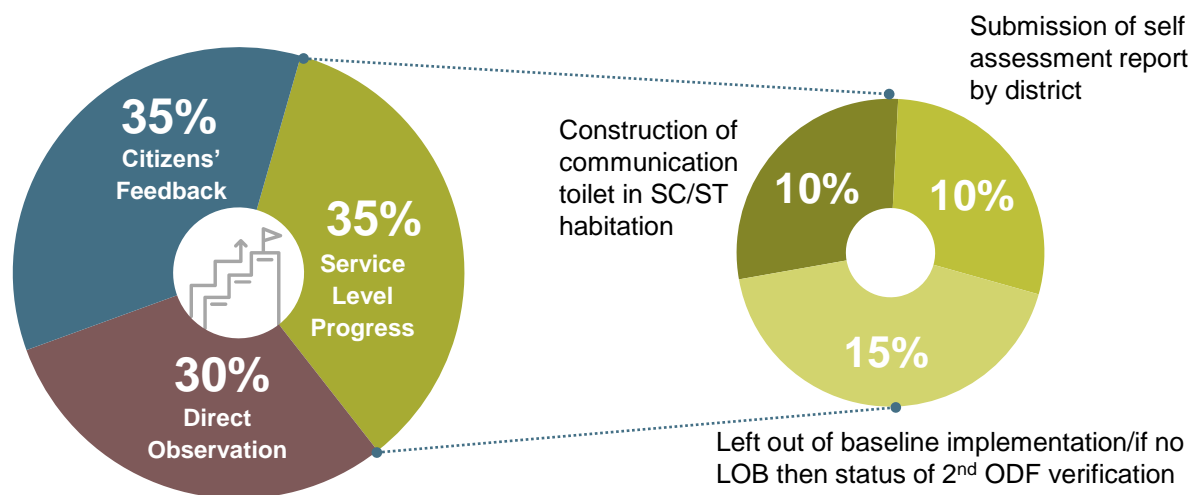


Figure 14: Service Level Progress Marks

Table 22: Weights scheme for determining service level progress

Parameters	Scheme of Ranking	Weight
<b>LoB Implementation/ If no LoB, then status of 2<sup>nd</sup> ODF Verification?</b> (Source: IMIS Data)	1-20 percent	4
	20-40 percent	6
	40-60 percent	10
	60-80 percent	12
	80-100 percent	15
<b>Construction of community toilets in SC/ST Habitations</b> (Source: IMIS Data)	1-25 percent	2
	25-50 percent	6
	50-75 percent	8
	75-100 percent	10
<b>Submission of Self-Assessment Reports on SSG Online Portal using the prescribed template</b> (Source: Online Self-reporting data by districts)	Notification of ODF-S Cell	1
	Orders for construction of community toilets in SC/ST Habitation issued	3
	Public advertisement on special drive for universal coverage of HHs with toilets	3
	Availability of Field Trainers for Capacity Building of Panchayats and Swachhagrahis	2
	Implementation of 4+1 IEC	1

### Calculation of scores

The service level progress was of maximum 35 marks and district score was calculated by adding the weights of all three parameters defined under the weighing section above. State score were calculated by taking average district score of service level progress.



# Survey Results

# Chapter 5

## 5. SURVEY RESULTS

### 5.1 Results of Citizen Feedback Captured Through Online App and IVR

The national score for awareness among the citizens regarding their district's participation in SSG-19 was found to be 97.5 %. The awareness percentage was highest in Haryana (98.60 percent), followed by Uttar Pradesh (98.55 percent).

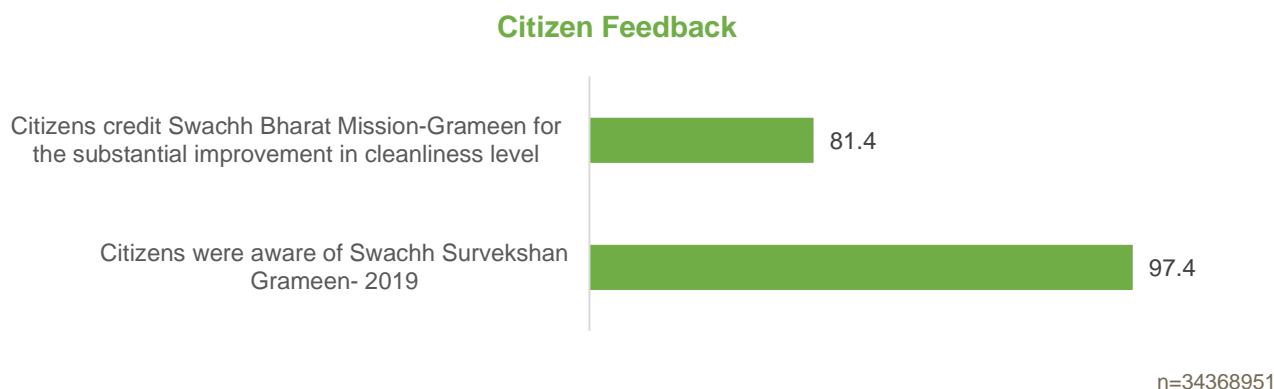


Figure 15: Results of Citizen Feedback

### Awareness of SSG 2019 across the states

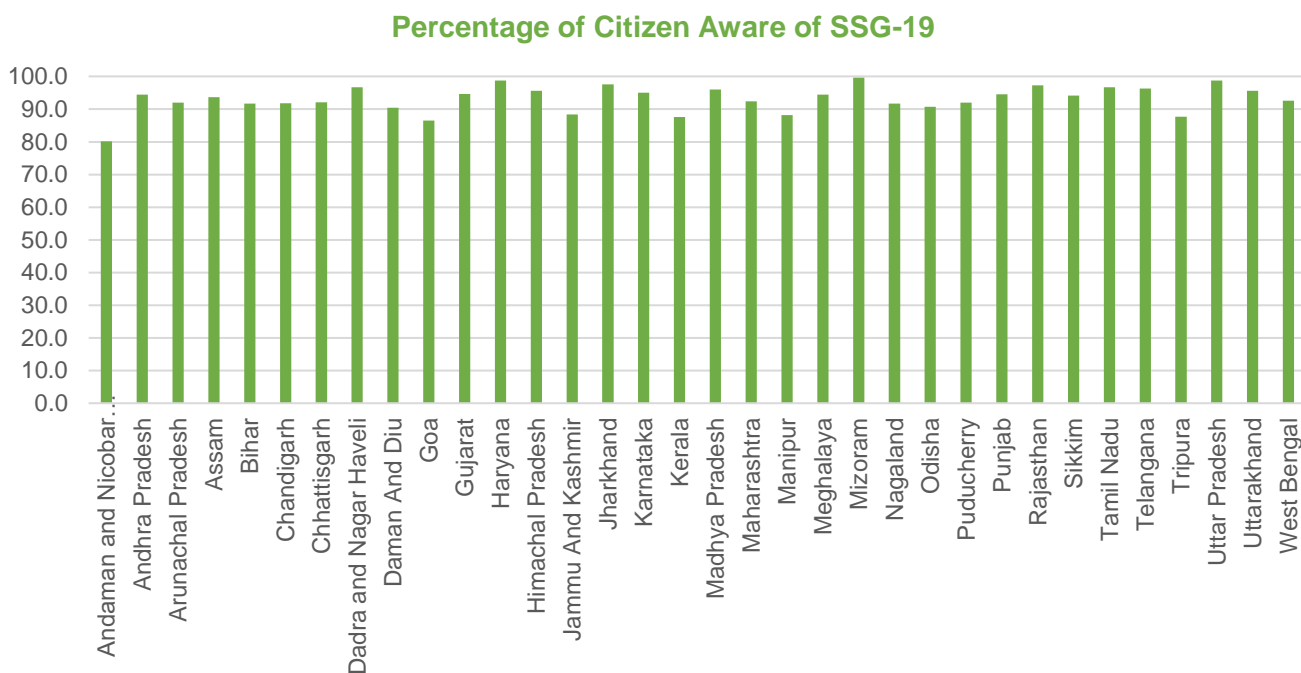


Figure 16: Awareness in State about SSG-19

## Waste Disposal Arrangements in the Villages

84.1 % of the citizens reported that their village had sufficient arrangements for solid waste management and only 8 % of the citizens reported insufficient arrangements. As compared to the data of SSG-18 a substantial change was observed in 2019. In 2018 only 66% of the citizens had reported sufficient arrangements in managing solid waste.

### Arrangement of Solid Waste management in the village

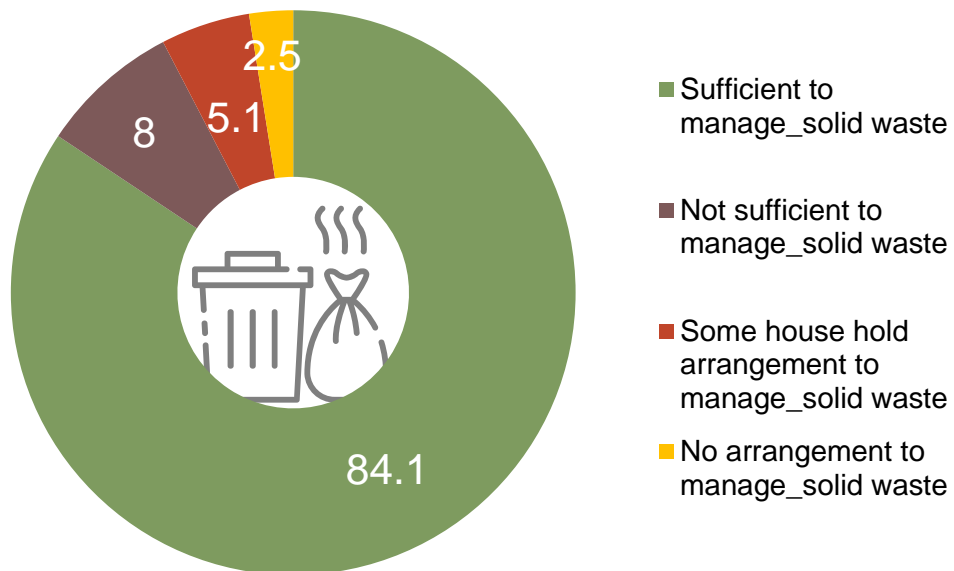


Figure 17: Solid waste management arrangement in the village

83% Citizens reported sufficient arrangements in their village to manage liquid waste.

### Arrangement of Liquid Waste management in the village

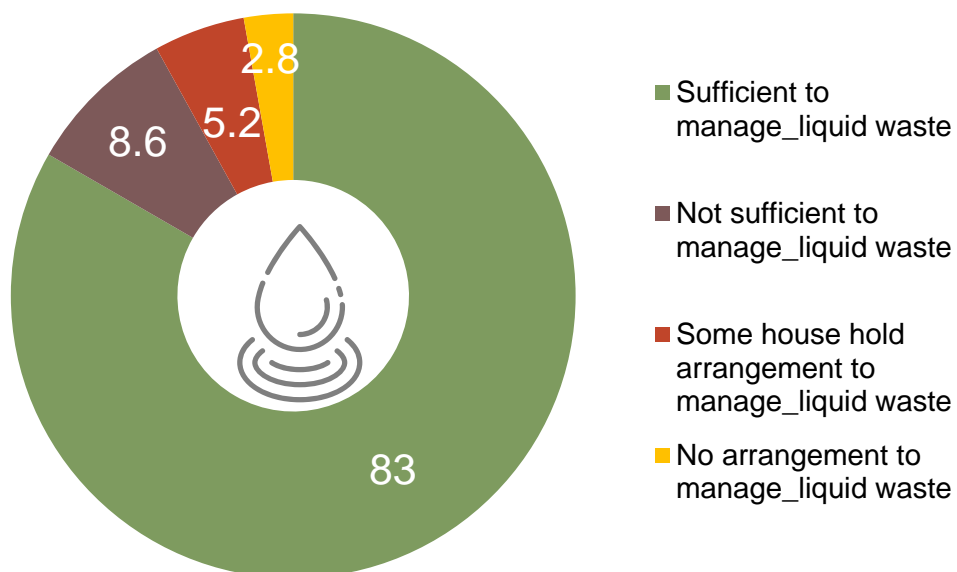


Figure 18: Liquid waste management arrangement in the village

## 5.2 Survey Results from Direct Observations

Under the SSG-19, the districts had been advised to build toilets and it was observed that the overall compliance level was high with 72.5% public places having access to toilets. The graph below shows the % of toilets in types of public places visited.

Nineteen states have scored more than the national average for this parameter. The first five larger states that had above average scores for access to toilets under direct observation parameter are Kerala (97.52 percent), Haryana (95.23 percent), Tamil Nadu (94.30 percent) Chhattisgarh (87.80 percent), and Gujarat (84.55 percent). The first three states for this parameter amongst the smaller state and union territories are Sikkim (97.24 percent), Daman and Diu (96.72 percent) and Dadra & Nagar Haveli (85.35 percent). These few states scored exceptionally high scores as compared to others.

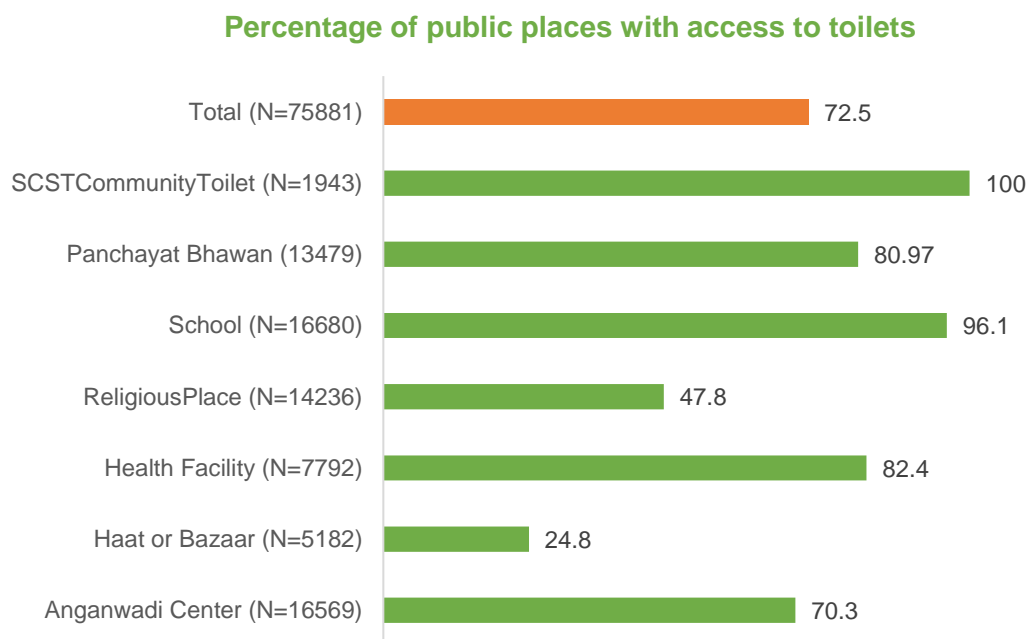


Figure 19: Percentage of public places with access to toilets

Under the SSG-19, the districts were advised to manage plastic waste, and the national average for public places free from plastic litter was 88.7%. The graph below shows the % of public places that were found free from litter.

Eighteen states have scored more than the national average for this parameter. The first five larger states that had above average scores for being plastic litter free in public places are Jammu and Kashmir (97.13 percent), Gujarat (96.51 percent), Tamil Nadu (96.06 percent) Punjab (95.94 percent), and Telangana (95.31 percent). The first three states for this parameter amongst the smaller state and union territories are Dadra & Nagar Haveli (100 percent), Daman and Diu (98.80 percent) and Sikkim (95.84 percent). These few states scored exceptionally high scores as compared to others.

### Percentage of Public Places with No Plastic Litter

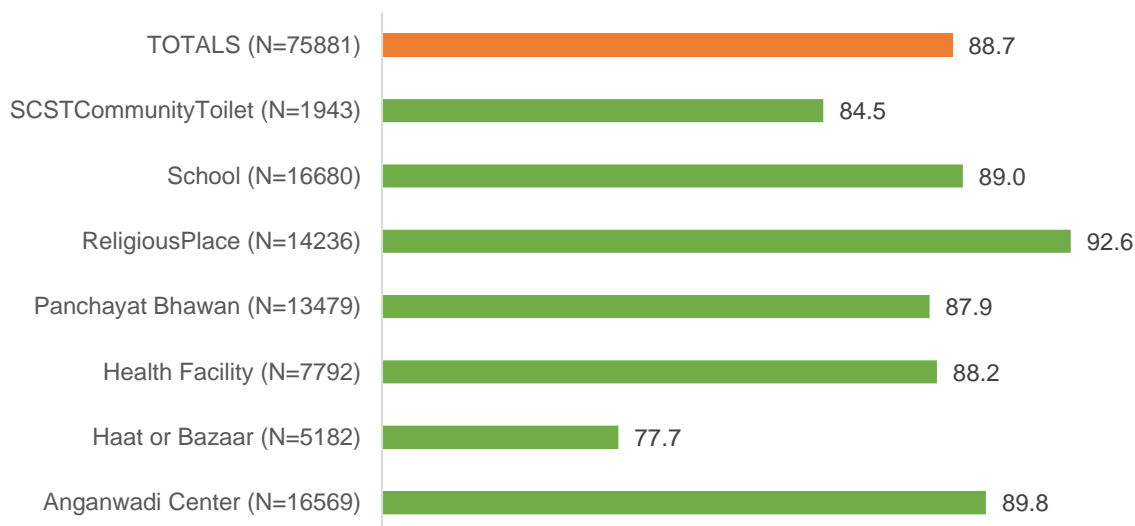


Figure 20: Percentage of Public Places with No Plastic Litter

Under the SSG-19, the districts were advised to work towards reduced the water logging in their area, and the national average for public places that did not have stagnant water was 92.5%. The graph below shows the % of public places that had no water logging.

Seventeen states have scored more than the national average for this parameter. The first five larger states that had above average scores for access to toilets under direct observation parameter are Tamil Nadu (98.17 percent), Gujarat (98.10 percent), Jammu & Kashmir (97.82 percent), Himachal Pradesh (97.70 percent), and Haryana (97.23 percent). The first three states for this parameter amongst the smaller state and union territories are Dadra & Nagar Haveli (100 percent), Daman and Diu (98.80 percent) and Sikkim (95.84 percent). These few states scored exceptionally high scores as compared to others.

### Percentage of Public Places with No Water Logging

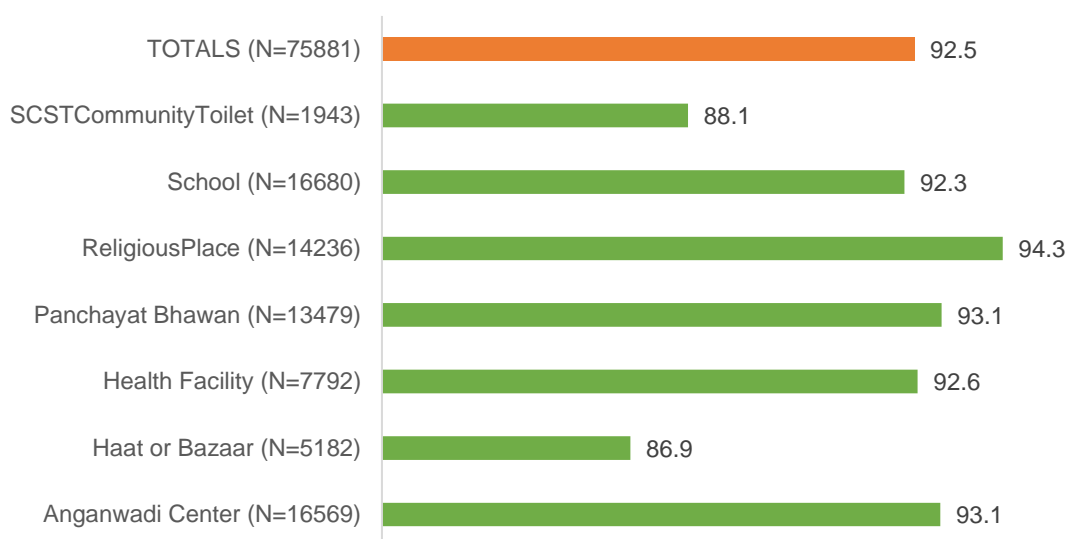


Figure 21: Percentage of Public Places with No water logging

# Ranks and Results of Top States and Districts

## Chapter 6

## 6. RANKS AND RESULTS OF TOP STATES AND DISTRICTS

### 6.1 Top Ranked States and Districts on Basis of the Total Score

#### Top three States: By Larger States (>30 lakh population)

Rank	Larger States	Scores
1	Tamil Nadu	83.54
2	Haryana	81.86
3	Gujarat	77.98

#### Top three States: Smaller/UTs categorization (<30 lakh population)

Rank	Smaller States and Union Territories	Scores
1	Mizoram	81.02
2	Daman & Diu	76.32
3	Sikkim	75.51

#### Top three Districts

Rank	Districts	Scores
1	Peddapalli	89.0864
2	Faridabad	89.0861
3	Rewari	89.0185

#### Top states: By zones and Union Territories

Zones/UTs	Top State	Scores
Southern	Tamil Nadu	83.54
Northern	Haryana	81.86
Eastern	Jharkhand	76.69
Western	Gujarat	77.98
North-East	Mizoram	81.02
Union Territories	Daman & Diu	76.32

### 6.2 Rank of States based on App and IVR Response for Citizen Feedback (Absolute Number)

#### Top State in APP & IVR response

No.	State	Total Responses
1	Uttar Pradesh	1,54,49,114

#### Top District in APP & IVR response

No.	District	Total Responses
1	Gorakhpur	1380005

## 6.3 Top Ranked States in the Zones

### Top 3 States zone wise

Zones/UTs	State Rank-1	Scores	State Rank-2	Scores	State Rank-3	Scores
Southern	Tamil Nadu	83.54	Telangana	73.38	Kerala	71.35
Northern	Haryana	81.86	Uttar Pradesh	75.55	Uttarakhand	72.91
Eastern	Jharkhand	76.69	Chhattisgarh	67.90	West Bengal	59.52
Western	Gujarat	77.98	Maharashtra	68.98	Madhya Pradesh	66.74
North-East	Mizoram	81.02	Sikkim	75.51	Arunachal Pradesh	61.76
Union Territories	Daman & Diu	76.32	D&N Haveli	66.92	Puducherry	62.02

### Top 3 Districts zone wise

Zones/UTs	District Rank-1	Scores	District Rank-2	Scores	District Rank-3	Scores
Southern	Peddapalli	89.08	Thoothukudi	88.12	Dindigul	87.71
Northern	Faridabad	89.08	Rewari	89.01	Mahendragarh	88.56
Eastern	Khunti	84.05	Dumka	83.91	Simdega	83.65
Western	Patan	88.86	Mahisagar	87.61	Panch Mahals	86.83
North-East	Kolasib	85.21	Serchip	83.60	Aizwal	83.17
Union Territories	Daman	80.91	Diu	71.72	D&N Haveli	66.91





## 6.4 Ranking of all States and UTS on Total Score

SSG 2019	State Name	Total Score (100)	Direct Observation (30)	Citizen Feedback (35)	Service level Progress (35)
<b>Rank</b>					
<b>Larger States</b>					
1	Tamil Nadu	83.54	28.79	32.24	22.52
2	Haryana	81.86	28.89	31.97	21.00
3	Gujarat	77.98	27.56	28.24	22.18
4	Jharkhand	76.69	24.54	28.40	23.75
5	Uttar Pradesh	75.55	24.43	30.47	20.65
6	Telangana	73.38	26.13	28.92	18.33
7	Uttarakhand	72.91	24.58	26.95	21.38
8	Kerala	71.35	28.84	21.79	20.71
9	Punjab	70.88	25.71	25.39	19.77
10	Andhra Pradesh	70.59	21.01	26.74	22.85
11	Maharashtra	68.98	25.04	23.68	20.26
12	Chhattisgarh	67.90	27.24	26.77	13.89
13	Madhya Pradesh	66.74	24.33	22.08	20.33
14	Karnataka	63.96	24.23	21.70	18.03
15	Rajasthan	63.52	24.86	22.78	15.88
16	Himachal Pradesh	61.37	26.22	21.23	13.92
17	West Bengal	59.52	25.52	20.05	13.95
18	Bihar	57.88	22.10	17.83	17.95
19	Assam	53.97	23.17	18.07	12.73
20	Jammu & Kashmir	43.49	9.06	17.43	17.00
21	Odisha	42.70	20.32	16.24	6.13
<b>Smaller States and Union Territories</b>					
1	Mizoram	81.02	26.00	30.27	24.75
2	Daman & Diu	76.32	28.46	29.86	18.00
3	Sikkim	75.51	29.28	24.22	22.00
4	D & N Haveli	66.92	26.09	30.83	10.00
5	Puducherry	62.02	26.78	20.24	15.00
6	Arunachal Pradesh	61.76	21.45	19.26	21.05
7	A & N Islands	50.27	26.07	24.20	0.00
8	Tripura	50.24	23.20	20.53	6.50
9	Meghalaya	47.43	22.65	17.79	7.00
10	Goa	45.54	26.02	19.52	0.00
11	Manipur	44.84	23.82	14.39	6.63
12	Nagaland	44.77	24.89	18.96	0.91

## 6.5 Top 100 Districts on the Basis of Total Score

SSG-19	District Name	State Name	Total Score (100)	Direct Observation (30)	Citizen Feedback (35)	Service level Progress (35)
<b>Rank</b>						
1	Peddapalli	Telangana	89.0864	29.96	34.12	25
2	Faridabad	Haryana	89.0861	29.50	34.59	25
3	Rewari	Haryana	89.0185	29.65	34.37	25
4	Patan	Gujarat	88.8663	29.96	33.91	25
5	Mahendragarh	Haryana	88.5612	29.36	34.20	25
6	Charki Dadri	Haryana	88.2537	28.93	34.32	25
7	Thoothukudi	Tamil Nadu	88.1212	29.88	34.24	24
8	Bhiwani	Haryana	87.9336	28.54	34.39	25
9	Dindigul	Tamil Nadu	87.7167	29.73	33.98	24
10	Mahisagar	Gujarat	87.6130	29.16	33.45	25
11	Jagtial	Telangana	87.3125	29.36	32.95	25
12	Karnal	Haryana	87.0789	29.13	32.95	25
13	Tiruvarur	Tamil Nadu	87.0505	30.00	32.05	25
14	Rajanna Siricilla	Telangana	87.0350	29.50	32.53	25
15	Panch Mahals	Gujarat	86.8315	28.87	32.96	25
16	Kanchipuram	Tamil Nadu	86.6920	29.64	33.05	24
17	Karimnagar	Telangana	86.6516	29.76	32.89	24
18	Villupuram	Tamil Nadu	86.6450	29.67	32.98	24
19	Nilgiris (Udhagamandalam)	Tamil Nadu	86.6113	29.28	32.34	25
20	Thanjavur	Tamil Nadu	86.5381	29.32	33.22	24
21	Salem	Tamil Nadu	86.3286	29.29	33.04	24
22	Rohtak	Haryana	86.1991	29.07	32.13	25
23	Warangal	Telangana	86.1685	27.34	33.83	25
24	Kaithal	Haryana	85.7299	29.08	34.65	22
25	Gurgaon	Haryana	85.7207	29.77	33.95	22
26	Gorakhpur	Uttar Pradesh	85.6658	28.74	31.93	25
27	Namakkal	Tamil Nadu	85.6641	29.62	32.05	24
28	Kanshiram Nagar (Kasganj)	Uttar Pradesh	85.6347	27.44	33.20	25
29	Farrukhabad	Uttar Pradesh	85.5602	26.98	33.58	25
30	Firozabad	Uttar Pradesh	85.5384	27.25	33.29	25
31	Yamunanagar	Haryana	85.3426	27.52	32.83	25
32	Hapur	Uttar Pradesh	85.3153	27.58	33.73	24
33	Kolasib	Mizoram	85.2191	28.12	32.09	25
34	Wanaparthy	Telangana	85.2109	28.44	31.77	25
35	Krishnagiri	Tamil Nadu	85.1403	29.74	33.40	22

## 6.5 Top 100 Districts on the Basis of Total Score

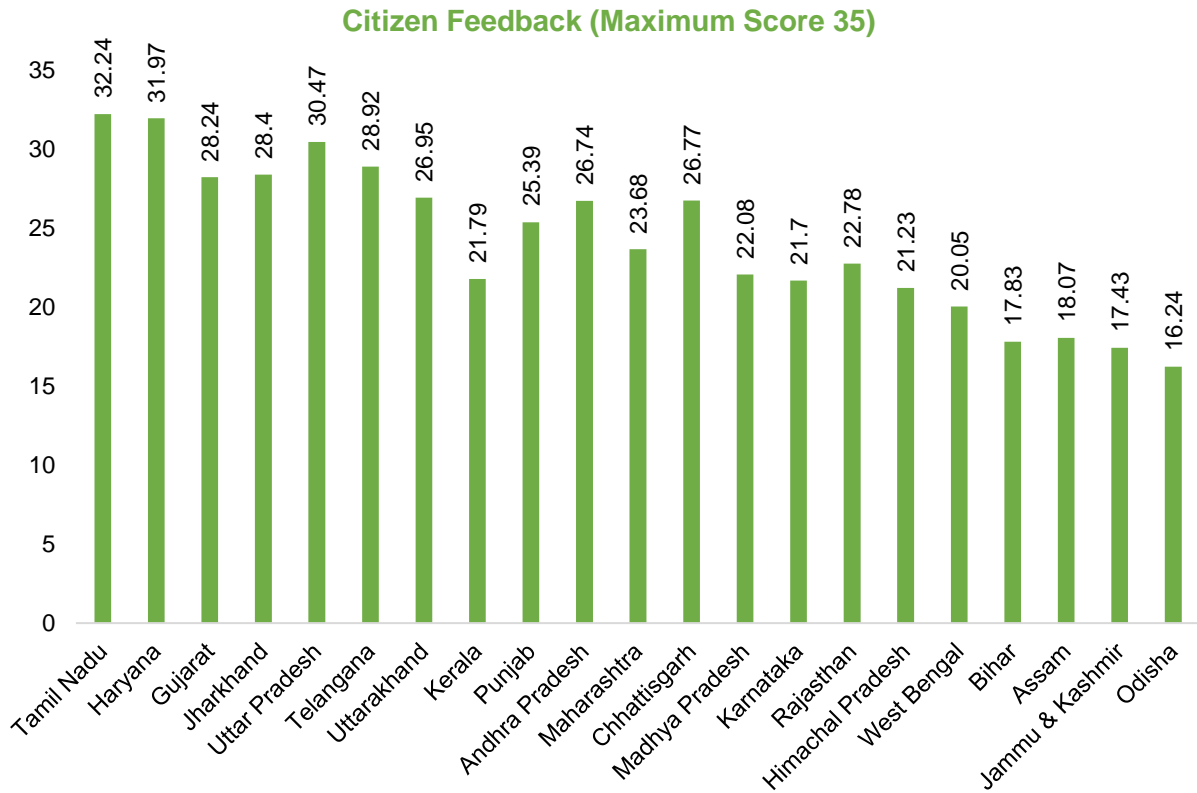
SSG-19	District Name	State Name	Total Score (100)	Direct Observation (30)	Citizen Feedback (35)	Service level Progress (35)
<b>Rank</b>						
38	Madurai	Tamil Nadu	84.7037	26.43	33.27	25
39	Kamareddy	Telangana	84.6879	27.34	32.35	25
40	Kanyakumari (nagercoil)	Tamil Nadu	84.3706	29.92	33.45	21
41	Nashik	Maharashtra	84.2951	29.17	31.13	24
42	Sindhudurg	Maharashtra	84.2930	28.57	30.72	25
43	Shravasti	Uttar Pradesh	84.1870	26.83	32.36	25
44	Tiruvannamalai	Tamil Nadu	84.0899	28.29	31.80	24
45	Ariyalur	Tamil Nadu	84.0800	28.68	31.40	24
46	Khunti	Jharkhand	84.0570	28.43	30.62	25
47	Devbhoomi Dwarka	Gujarat	84.0429	27.79	32.25	24
48	Mahamaya Nagar(hathras)	Uttar Pradesh	83.9530	25.54	34.42	24
49	Dumka	Jharkhand	83.9165	25.64	33.28	25
50	Vellore	Tamil Nadu	83.8218	29.55	32.27	22
51	Simdega	Jharkhand	83.6582	28.82	29.84	25
52	Tiruppur	Tamil Nadu	83.6351	28.98	30.65	24
53	Serchhip	Mizoram	83.6033	28.47	30.13	25
54	Tirunelveli	Tamil Nadu	83.5408	29.38	29.16	25
55	Tiruchirappalli	Tamil Nadu	83.5126	29.13	33.38	21
56	Pakur	Jharkhand	83.4668	27.02	31.44	25
57	Shamli	Uttar Pradesh	83.4475	26.61	31.84	25
58	Tiruvallur	Tamil Nadu	83.2610	29.01	33.25	21
59	Kurukshetra	Haryana	83.2460	29.08	34.17	20
60	Aizawl	Mizoram	83.1766	28.09	30.09	25
61	Porbandar	Gujarat	83.1648	28.48	29.69	25
62	Ramanathapuram	Tamil Nadu	83.0275	28.15	32.88	22
63	Vadodara	Gujarat	82.9888	28.81	29.17	25
64	Panipat	Haryana	82.9832	29.78	34.21	19
65	Dharmapuri	Tamil Nadu	82.7425	28.20	32.55	22
66	Khammam	Telangana	82.4777	27.31	30.17	25
67	Sirsa	Haryana	82.4259	29.81	33.62	19
68	Karur	Tamil Nadu	82.1836	29.18	32.00	21
69	Korba	Chhattisgarh	82.0583	29.38	27.67	25
70	Etawah	Uttar Pradesh	81.9304	25.08	31.85	25
71	Surat	Gujarat	81.9154	26.23	30.68	25

## 6.5 Top 100 Districts on the Basis of Total Score

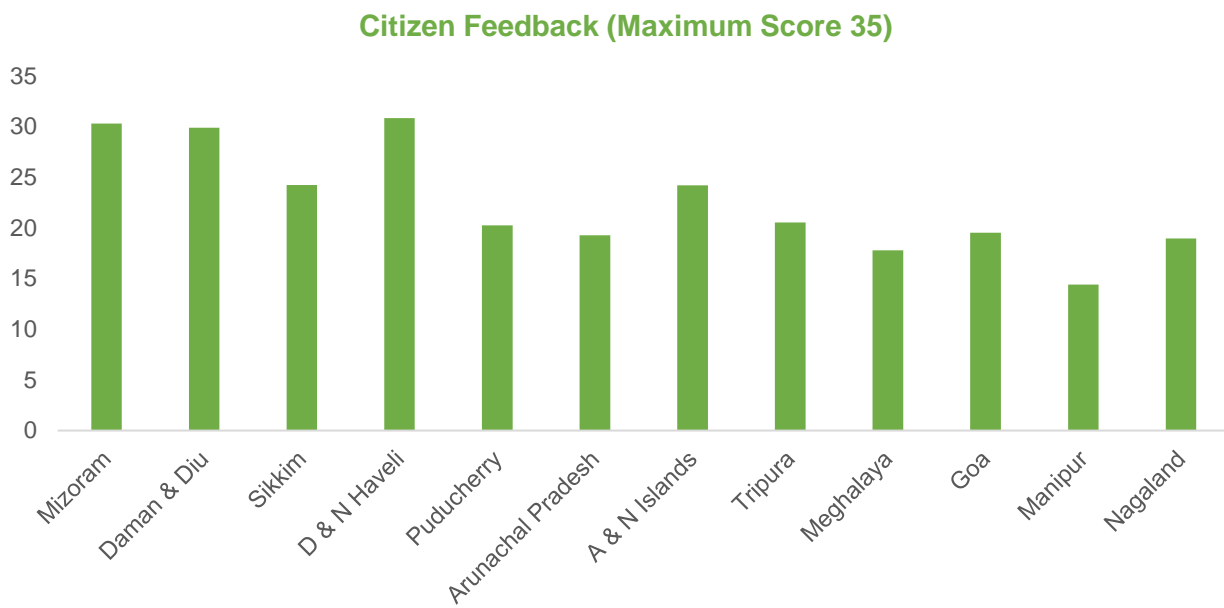
SSG-19	District Name	State Name	Total Score (100)	Direct Observation (30)	Citizen Feedback (35)	Service level Progress (35)
<b>Rank</b>						
72	Warangal Rural	Telangana	81.8390	29.38	27.67	25
73	Sonbhadra	Uttar Pradesh	81.7742	24.88	32.89	24
74	Rudraprayag	Uttarakhand	81.7024	25.40	31.30	25
75	Theni	Tamil Nadu	81.6623	29.96	32.70	19
76	Rajkot	Gujarat	81.6467	26.56	30.09	25
77	Deoghar	Jharkhand	81.6345	26.28	31.35	24
78	Giridih	Jharkhand	81.4287	26.83	30.60	24
79	Palwal	Haryana	81.3831	28.82	32.57	20
80	Bulandshahr	Uttar Pradesh	81.3172	26.20	31.11	24
81	Pudukkottai	Tamil Nadu	81.1798	26.09	32.09	23
82	Champhai	Mizoram	81.1686	26.19	29.98	25
83	Bijnor	Uttar Pradesh	81.0529	25.27	32.79	23
84	Maharajganj	Uttar Pradesh	80.9722	25.14	31.84	24
85	Daman	Daman & Diu	80.9117	29.09	30.82	21
86	Lunglei	Mizoram	80.7174	25.14	30.58	25
87	Satara	Maharashtra	80.6502	29.14	29.51	22
88	Mungeli	Chhattisgarh	80.6216	25.26	30.36	25
89	Sivaganga	Tamil Nadu	80.5496	25.44	33.11	22
90	Dangs	Gujarat	80.4943	27.23	31.27	22
91	Erode	Tamil Nadu	80.4130	28.88	30.53	21
92	Mandsaur	Madhya Pradesh	80.3962	26.03	29.36	25
93	Junagadh	Gujarat	80.3878	27.05	28.33	25
94	Virudhunagar	Tamil Nadu	80.3683	28.56	29.81	22
95	Mamit	Mizoram	80.3524	25.49	30.86	24
96	Sant Ravidas Nagar( Bhadohi)	Uttar Pradesh	80.3188	24.22	31.10	25
97	Jamnagar	Gujarat	80.1613	26.26	28.90	25
98	East Godavari	Andhra Pradesh	80.1496	24.81	30.34	25
99	Nizamabad	Telangana	79.9851	24.37	30.61	25
100	Kanker	Chhattisgarh	79.8576	26.39	28.47	25

## 6.6 Ranking of States Based on Citizen Feedback

### 6.6.1 Ranking of States Based on Citizen Feedback (>30 Lakh Population)

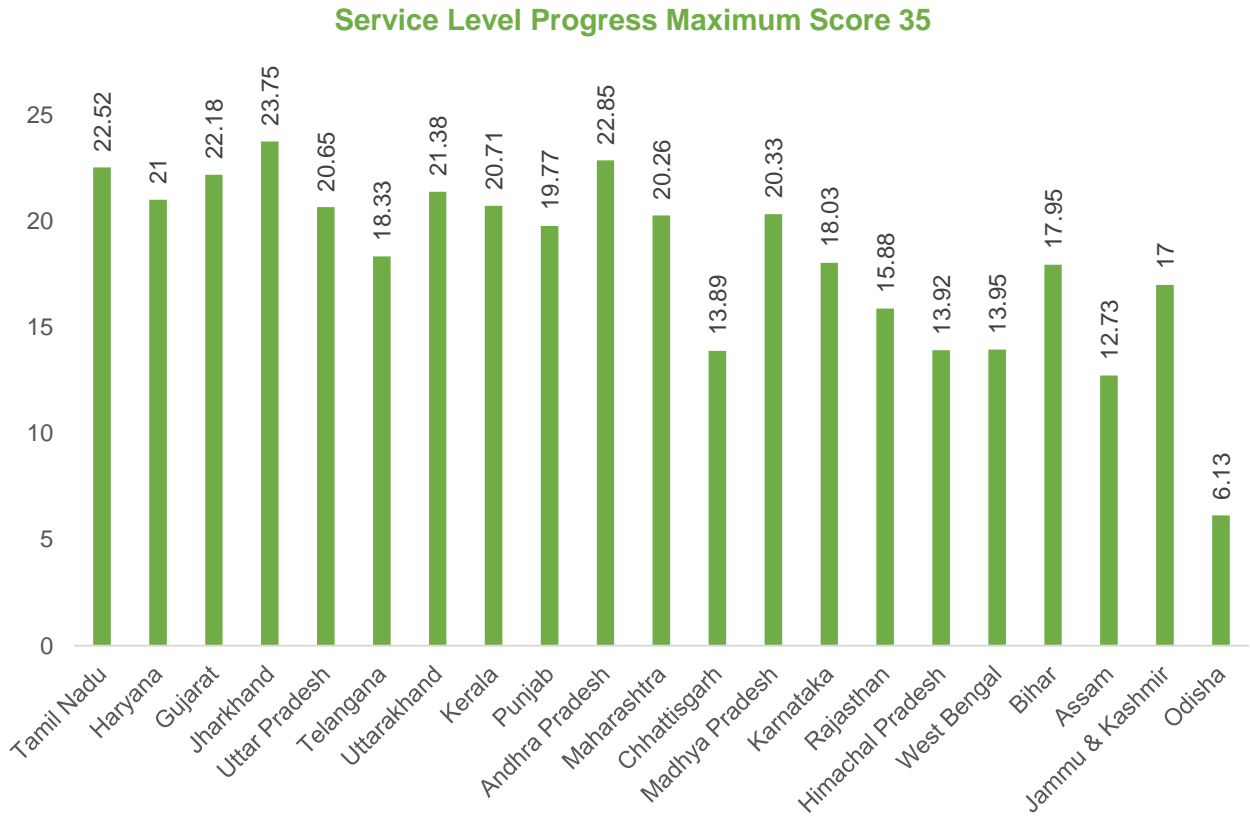


### 6.6.2 Ranking of States & UT based on Citizen Feedback (<30 Lakh Population)

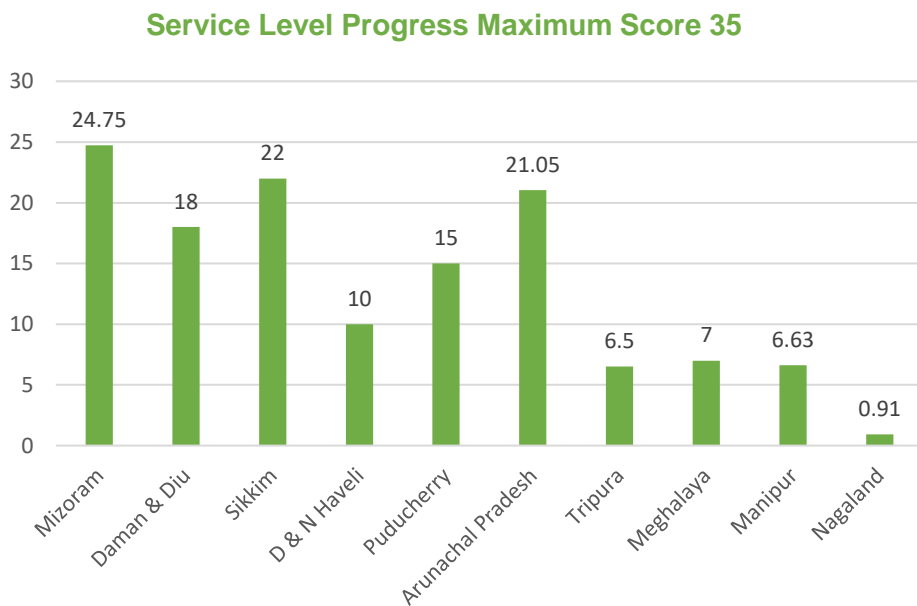


## 6.7 Service Level Progress Maximum Score

### 6.7.1 Service Level Progress Maximum Score (Larger State >30 Lakh Population)

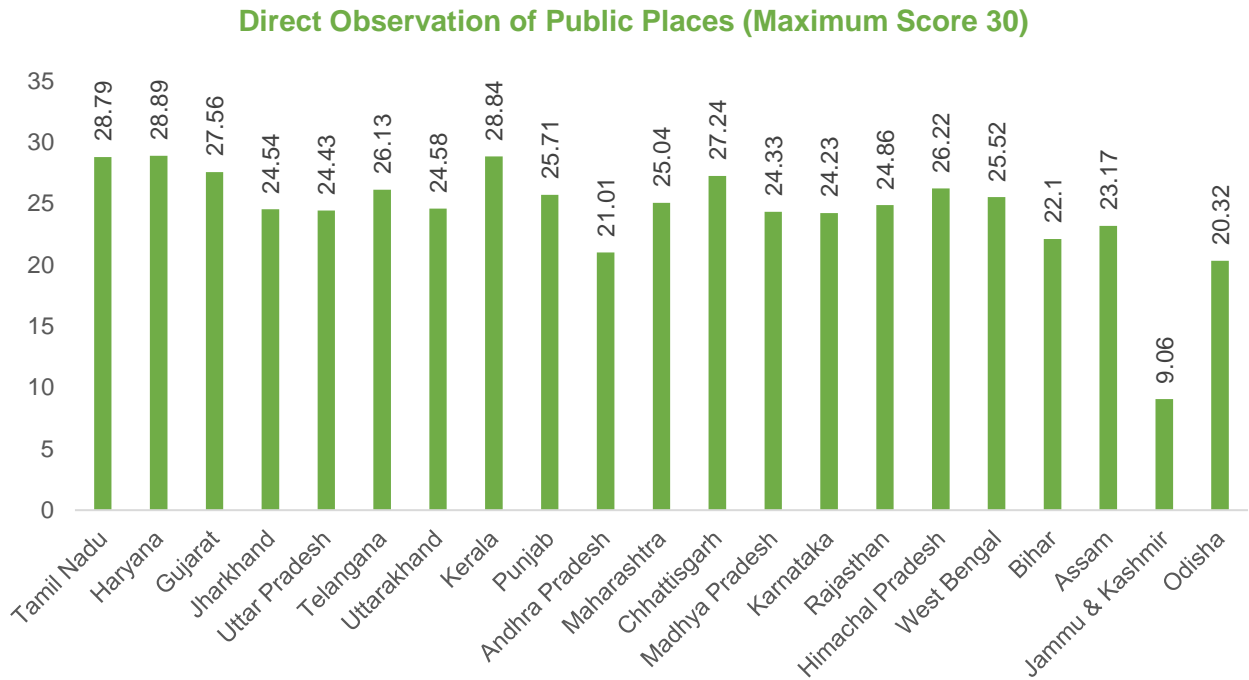


### 6.7.2 Service Level Progress Maximum Score (Larger State <30 Lakh Population)

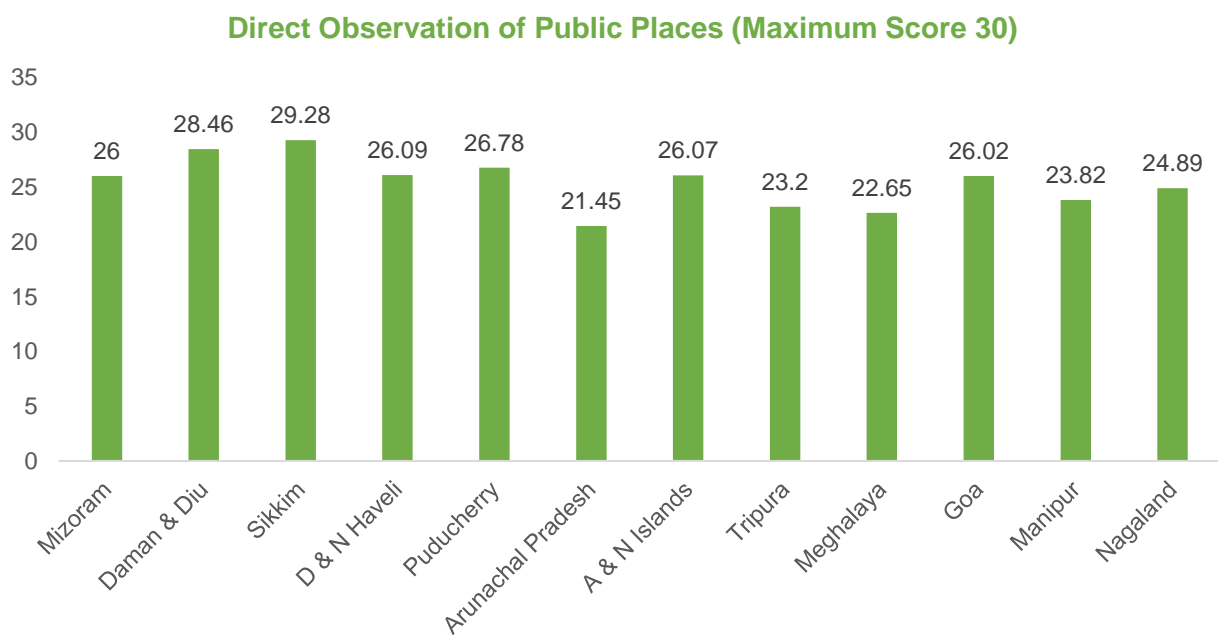


## 6.8. Direct Observation of Public Places

### 6.8.1 Direct Observation of Public Places (Larger State >30 Lakh Population)



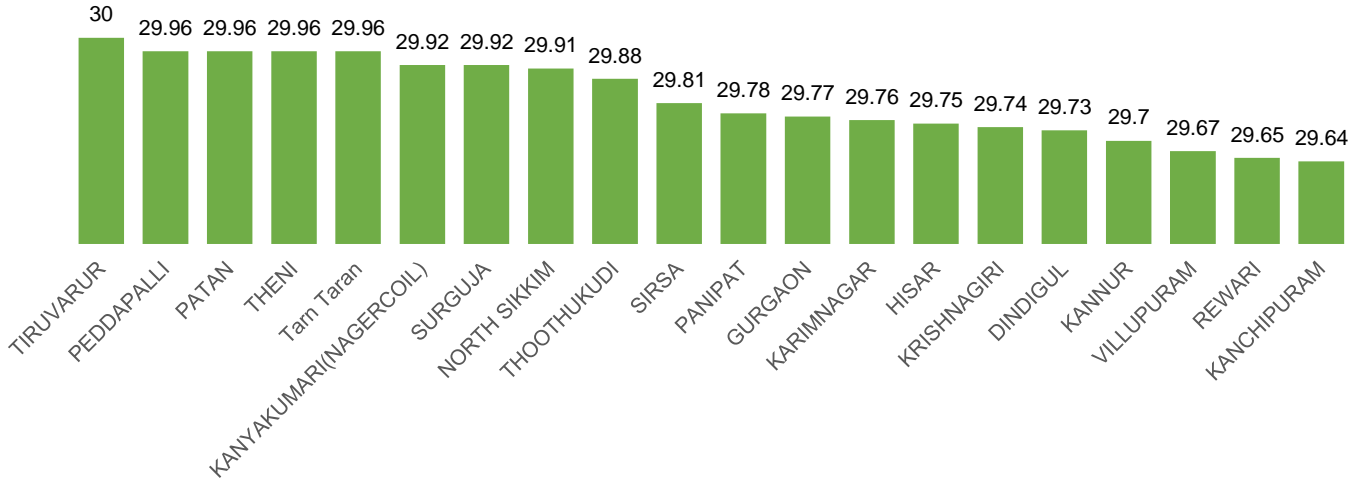
### 6.8.2 Direct Observation of Public Places (Larger State <30 Lakh Population)



## 6.9 Scores of Top 20 Districts

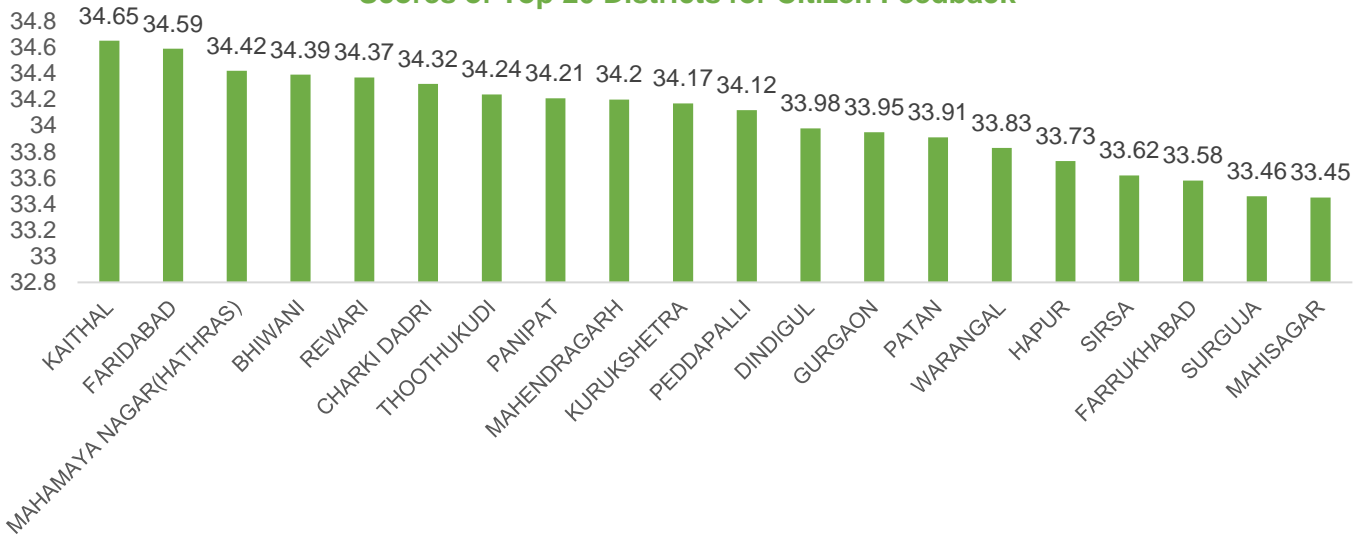
### 6.9.1 Top 20 District Based on Direct Observation

Scores of Top 20 Districts for Direct Observation



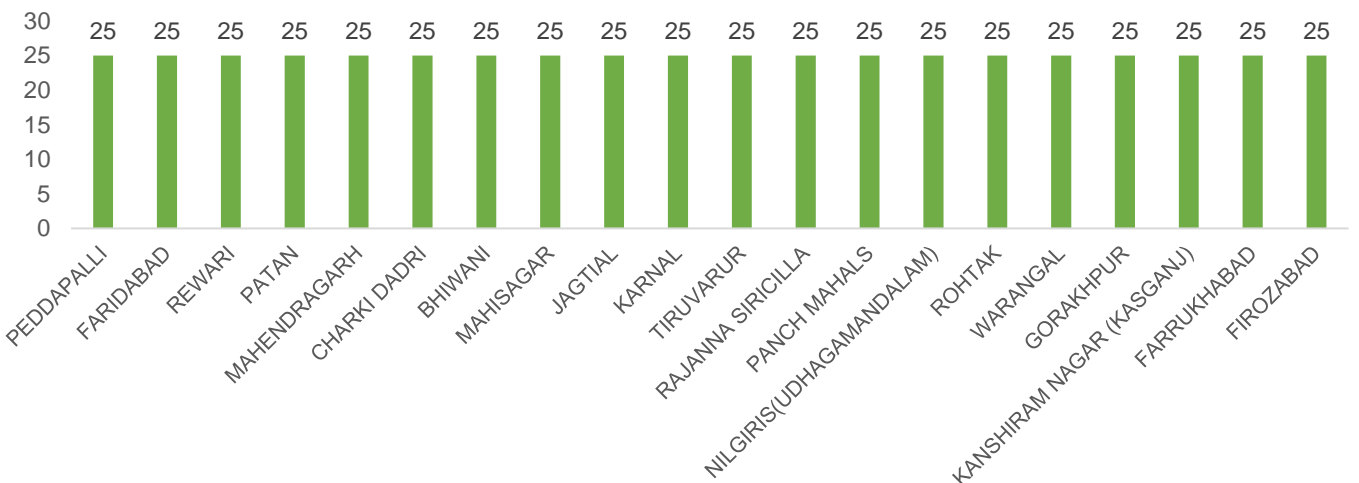
### 6.9.2 Top 20 District Based on Citizen Feedback

Scores of Top 20 Districts for Citizen Feedback



### 6.9.3 Top 20 District Based on Service Level Progress

Scores of Top 20 districts based on Service level progress





# Survey Implementation Process

## Chapter 7

## 7. SURVEY IMPLEMENTATION PROCESS

The survey covered 33 states and union territories which included 683 districts and 17, 209 villages. Considering the scale of the survey – an implementation plan was prepared. This implementation plan had ensured smooth execution of the survey to get good quality data. In this chapter the plan and key activities carried out as part of SSG-19 have been detailed out. Data quality assurance mechanism, ethical guidelines and key mitigation plan followed is also described in this chapter.

### 7.1 Launch Process of Swachh Survekshan Grameen :



#### Consultation with state Governments:

Ministry hosted a national consultation with all state governments on August 14, 2019 at New Delhi wherein the methodology and protocol were finalized and launched. Hon'ble Union Minister for Jal Shakti announced the initiation of Swachh Survekshan Grameen 2019. All additional chief secretaries/principal secretaries/secretaries along with mission directors in-charge of SBM-G were invited for the consultation and national launch of the SSG 19.



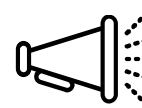
#### VC with states and districts:

Ministry organized VCs with all state principal secretaries and district magistrates from 15th August onwards to inform and engage them on the Swachh Survekshan. Districts had a central role in managing the Swachh Survekshan at the district level.



#### State launch of Swachh Survekshan Grameen:

State launches of Swachh Survekshan Grameen was held after the National launch in the state headquarters, involving key stakeholders to popularize the SSG 2019.



#### Public Announcement of Swachh Survekshan Grameen:

Ministry issued details of SSG 2019 on its website and other social media, on initiation of Swachh Survekshan Grameen 2019. The social media outreach intended to mobilise villages to initiate action on improving the sanitation situation in their villages.

### 7.2 Research Tools and Development of Manuals

Survey questionnaires were developed for the following components of the Survekshan and they were programmed into different modules of CAPI application. The following questionnaires were designed and used.

- Toolkit and detailed templates for self-reporting on sanitation status by districts and states using online formats and interventions implemented.
- Public Observation Tools - This questionnaire included a checklist of items that the investigator had to observe and report. Observations were done for public places like anganwadi centres, health facilities, schools, religious places, haats/bazaars, etc
- Citizen feedback Tools for different categories-general population, panchayat, SHG, FLWs etc. Direct Observation Checklist: Citizen Feedback: Citizen feedback questionnaire was prepared to capture feedback from citizens using F2F meeting with citizens, group meeting with citizens and through mobile app/IVR. Another structured tool was created to capture the information from the key informants.

The questionnaires were submitted to the DDWS for approval and upon approval they were translated into regional languages for the survey.

Tool kit and manual: To help the interviewers with the understanding about the survey protocols and manuals were prepared and shared with all members of the survey team. The following two manuals were primary for the survey a) CAPI Instruction manual b) Interviewers manual. Investigators and supervisors were explained about the entire process during the training.

Data collection was done on advanced CAPI devices that had all the requisite features like, GPS tracking, geo tagging, long battery life and scope to upload photographs.

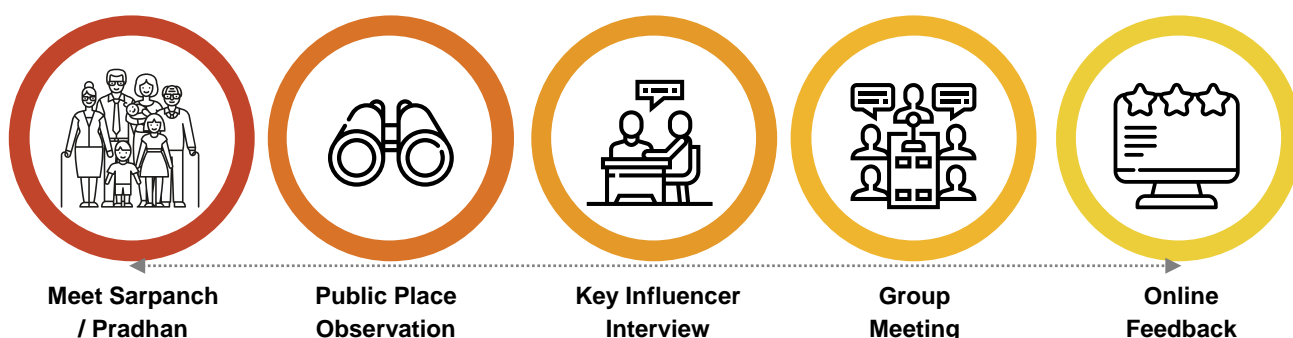
Ipsos in-house team was used for CAPI programming. iField was the software platform used by Ipsos which is a licensed property and was used for data collection.

Data was collected by more than 1000 investigators and supervisors in the field, and to authenticate the data collected by them was checked using rigorous quality control measures adopted at every stage of the execution.

- Field teams were selected after rigorous screening, that included experience, qualification and requisite skills required for such survey.
- CAPI application was tested as per protocol, to avoid any errors, during the data collection phase
- Standardized training was imparted by core research team, to all investigators and supervisors.
- 100% check on the GPS of the sample village was done, to map the coordinates of the investigator during the data collection.
- 100% check on the interviewer selfie, at the village, to authenticate the data collection.
- A supervisor accompanied the interviewer in 15% of the interviews.
- 10% back-checks were done by the supervisors.
- 5% targeted backchecks were done by the district coordinators.

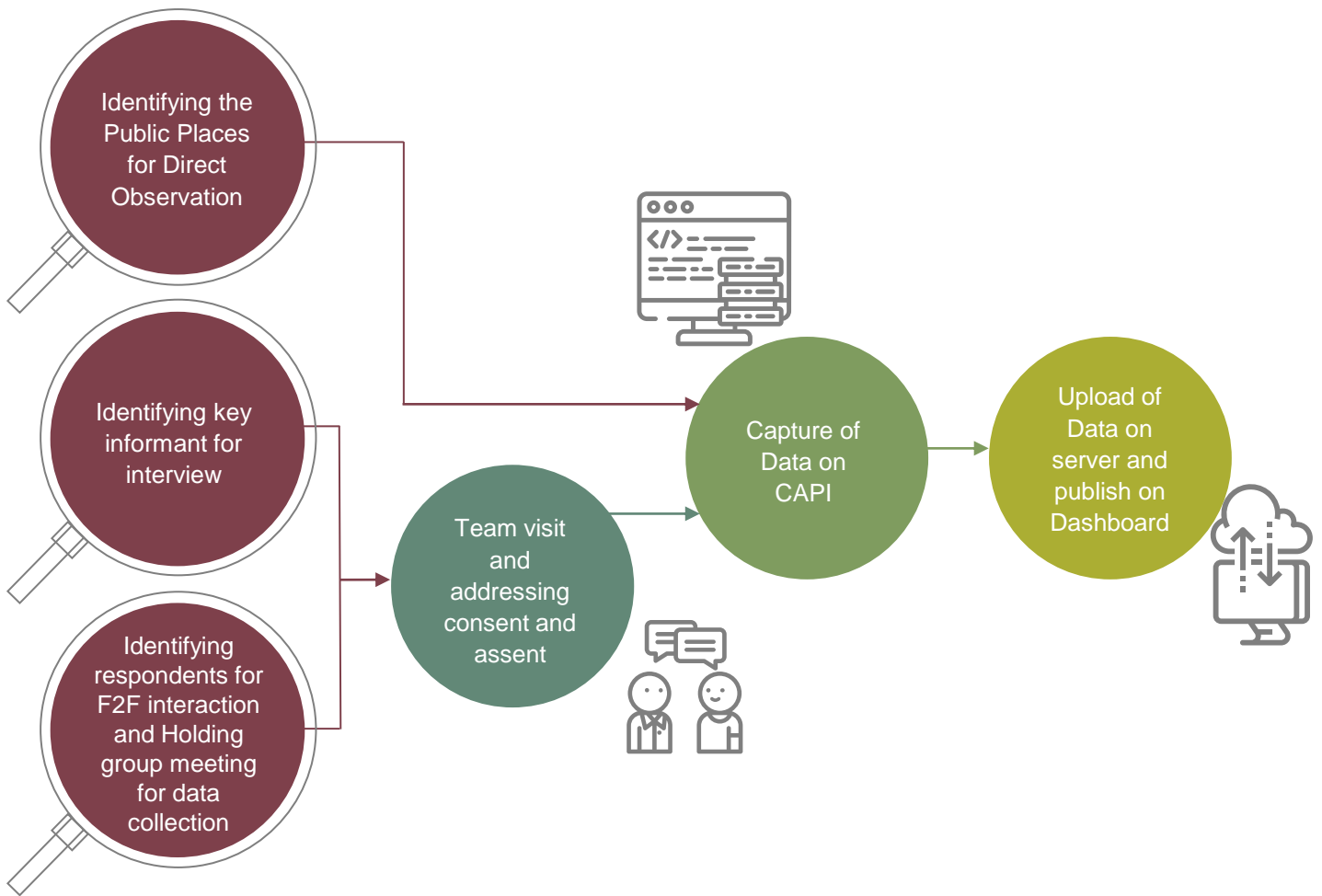
## 7.3 Data Collection

As part of the survey the investigators carried out following survey activities:

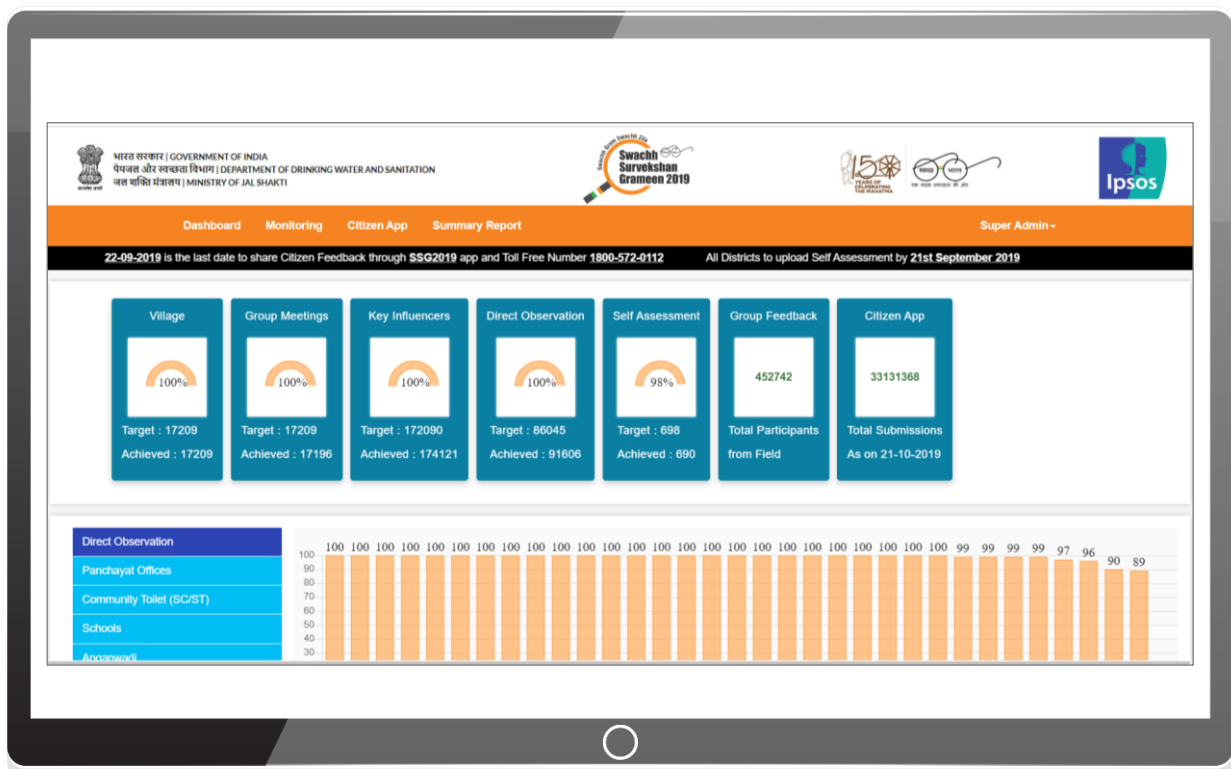


- The investigator accessed the SSG2019FS Mobile Application
- With the help of a Log-in Id and Password and village ID – login was confirmed.
- The investigator then contacted the village head (Sarpanch / Pradhan) over phone and informed the following:
  - Date and time of survey, SSG components, purpose of data collection
  - Survey activities to be conducted in the village and support required
  - Arrangement for the group meeting (Venue, number of people required, type of people required etc.)
  - Availability of key influencers and their participation
  - Availability of 5 public places for observation
- The investigator made the visit to the village site and first took an Assessor Selfie
- Synced the Selfie if internet available or start the survey
- Met village head Sarpanch/Pradhan and informed him/her about the survey activities to be undertaken
- Collected information of public places & details of key influencers
- Did observation and key informant interview one by one and clicked pictures
- Asked key informants to popularize the app and toll-free number among the residents of their village and neighbour village for participation in the survey.
- Conducted group meeting as per the protocol
- Thanked village head and members for the support provided.

The overall flow of the work was as follows:



The screen shot of the dashboard



## Data collection: Direct Observation and Citizen Feedback

For data capture for direct observation key indicators- the investigating team met the gram Pradhan/gram panchayat members and sought the details of the village. With the help of the gram Pradhan/gram panchayat members they listed out the public places to be visited.

## Feedback from Mobile App

An android based mobile App SSG2019 was used in the survey. It received tremendous response from the citizen. More than 3 crore feedback was received through the app.

**SSG Citizen Feedback**

**1. Were you aware about SwachhSurvekshan Grameen-2019?**

Yes

No

**2. How much has the general cleanliness of your village improved with implementation of SBM?**

Yes- substantial improvement-no complaints

Yes- clean than last year

Yes- only slightly better than last year

No change

**3. Has there been village level arrangements for safe disposal of solid waste?**

Yes- sufficient to manage all the waste of the village

Yes- But not sufficient to manage all the waste of the village

## Dashboard

A real time dashboard was maintained for close monitoring of the data collection process. Live data from the field was uploaded on the server. During the entire course of the field work, field teams transferred raw data daily by using an internet connection. In case of remote areas of field work where Internet connection was not available the transfer of data was done as soon as the investigator reached a place where the connection was available. Transfer of data required GSM or WiFi access, and this feature was available on each of the net book that was being used for data collection. The raw data was available on the dashboard and could be downloaded as and when required.



Screen shot of key indicators on the dashboard.

# ANNEXURES 1 : SCORES OF TOP RANKED STATES AND DISTRICTS

State Summary Report

SWACHH SURVEKSHAN GRAMEEN - 2019						
Tamil Nadu						
State Name	Tamil Nadu		Total	Citizen Feedback	Direct Observation	Service Level Progress
No of Districts	31					
No of Villages covered	824	Maximum score	100	35	30	35
National Rank	1st					
Category	Large State	State Score	<b>83.4</b>	<b>32.24</b>	<b>28.79</b>	<b>22.50</b>

## TOTAL SCORE

COMPONENT WISE SCORE	
1) Direct Observations of sanitation public places (30)	<b>28.791</b>
i. Accessibility of sanitation services (5)	4.744
ii. Usage of assets (5)	4.435
iv. Status of Littering in the public place (10)	9.778
v. Status of stagnant Water in the public place (10)	9.834
2) Feedback from Citizens	<b>32.24</b>
2a) Feedback from ordinary Citizens (F2F+IVR+GFB) (20)	<b>18.465</b>
i. Awareness about SSG 2018 (2)	1.931
ii. Improvement in cleanliness since the implementation of SBM (6)	5.414
iii. Arrangements for safe disposal of solid waste (6)	5.602
iv. Arrangements for safe disposal of liquid waste (6)	5.516
2b) Feedback from Key Informants: (10)	<b>8.904</b>
i. Awareness about SSG 2018 (1)	0.947
ii. IEC activities conducted in village (3)	2.601
iii. Availability of liquid waste management in village (3)	2.581
iv. Availability of solid waste management in village (3)	2.773
2C) Online feedback received: (5)	<b>4.870</b>
3) Service Level Progress on sanitation related parameters (35)	
3a) Submission of self-assessment report by district (10)	8.760
3b) LoB Implementation/ If no LoB, then status of 2nd ODF verification (15)	13.806
3c) Construction of community toilets in SC/ST habitation (10)*	0

\*Data was not available in IMIS- hence excluded

# ANNEXURES 1 : SCORES OF TOP RANKED STATES AND DISTRICTS

State Summary Report

SWACHH SURVEKSHAN GRAMEEN - 2019						
Haryana						
State Name	Haryana	Maximum score	Total	Citizen Feedback	Direct Observation	Service Level Progress
No of Districts	22					
No of Villages covered	514	100	35	30	35	
National Rank	2nd	State Score	<b>81.86</b>	<b>31.97</b>	<b>28.89</b>	<b>21.00</b>
Category	Large State					

## TOTAL SCORE

COMPONENT WISE SCORE	
1) Direct Observations of sanitation public places (30)	<b>28.894</b>
i. Accessibility of sanitation services (5)	4.798
ii. Usage of assets (5)	4.371
iv. Status of Littering in the public place (10)	9.805
v. Status of stagnant Water in the public place (10)	9.920
2) Feedback from Citizens	<b>31.97</b>
2a) Feedback from ordinary Citizens (F2F+IVR+GFB) (20)	<b>18.934</b>
i. Awareness about SSG 2018 (2)	1.972
ii. Improvement in cleanliness since the implementation of SBM (6)	5.664
iii. Arrangements for safe disposal of solid waste (6)	5.656
iv. Arrangements for safe disposal of liquid waste (6)	5.640
2b) Feedback from Key Informants: (10)	<b>8.813</b>
i. Awareness about SSG 2018 (1)	0.955
ii. IEC activities conducted in village (3)	2.723
iii. Availability of liquid waste management in village (3)	2.619
iv. Availability of solid waste management in village (3)	2.514
2C) Online feedback received: (5)	<b>4.227</b>
3) Service Level Progress on sanitation related parameters (35)	<b>21</b>
3a) Submission of self-assessment report by district (10)	6.5
3b) LoB Implementation/ If no LoB, then status of 2nd ODF verification (15)	14.454
3c) Construction of community toilets in SC/ST habitation (10)*	0

\*Data was not available in IMIS- hence excluded

# ANNEXURES 1 : SCORES OF TOP RANKED STATES AND DISTRICTS

State Summary Report

SWACHH SURVEKSHAN GRAMEEN - 2019						
Gujarat						
State Name	Gujarat	Maximum score	Total	Citizen Feedback	Direct Observation	Service Level Progress
No of Districts	33					
No of Villages covered	797	100	35	30	35	
National Rank	3rd	State Score	<b>77.98</b>	<b>28.24</b>	<b>27.56</b>	<b>22.18</b>
Category	Large State					

## TOTAL SCORE

COMPONENT WISE SCORE	
1) Direct Observations of sanitation public places (30)	<b>27.552</b>
i. Accessibility of sanitation services (5)	4.284
ii. Usage of assets (5)	3.561
iv. Status of Littering in the public place (10)	9.810
v. Status of stagnant Water in the public place (10)	9.898
2) Feedback from Citizens	<b>28.23</b>
2a) Feedback from ordinary Citizens (F2F+IVR+GFB) (20)	<b>17.066</b>
i. Awareness about SSG 2018 (2)	1.884
ii. Improvement in cleanliness since the implementation of SBM (6)	5.121
iii. Arrangements for safe disposal of solid waste (6)	5.047
iv. Arrangements for safe disposal of liquid waste (6)	5.012
2b) Feedback from Key Informants: (10)	<b>7.261</b>
i. Awareness about SSG 2018 (1)	0.925
ii. IEC activities conducted in village (3)	2.343
iii. Availability of liquid waste management in village (3)	1.977
iv. Availability of solid waste management in village (3)	2.014
2C) Online feedback received: (5)	<b>3.909</b>
3) Service Level Progress on sanitation related parameters (35)	<b>21</b>
3a) Submission of self-assessment report by district (10)	6.5
3b) LoB Implementation/ If no LoB, then status of 2nd ODF verification (15)	14.454
3c) Construction of community toilets in SC/ST habitation (10)*	0

\*Data was not available in IMIS- hence excluded



# ANNEXURES 1 : SCORES OF TOP RANKED STATES AND DISTRICTS

State Summary Report

SWACHH SURVEKSHAN GRAMEEN - 2019						
Mizoram						
State Name	Gujarat		Total	Citizen Feedback	Direct Observation	Service Level Progress
No of Districts	8					
No of Villages covered	176	Maximum score	100	35	30	35
National Rank	1st					
Category	Smaller State & UT	State Score	<b>81.02</b>	<b>30.27</b>	<b>26</b>	<b>24.75</b>

## TOTAL SCORE

COMPONENT WISE SCORE	
1) Direct Observations of sanitation public places (30)	<b>25.996</b>
i. Accessibility of sanitation services (5)	4.062
ii. Usage of assets (5)	3.222
iv. Status of Littering in the public place (10)	9.375
v. Status of stagnant Water in the public place (10)	9.339
2) Citizen's Feedback (35)	<b>30.271</b>
2a) Feedback from ordinary Citizens (F2F+IVR+GFB) (20)	<b>19.479</b>
i. Awareness about SSG 2018 (2)	1.948
ii. Improvement in cleanliness since the implementation of SBM (6)	5.859
iii. Arrangements for safe disposal of solid waste (6)	5.847
iv. Arrangements for safe disposal of liquid waste (6)	5.823
2b) Feedback from Key Informants: (10)	<b>5.792</b>
i. Awareness about SSG 2018 (1)	0.729
ii. IEC activities conducted in village (3)	1.858
iii. Availability of liquid waste management in village (3)	1.437
iv. Availability of solid waste management in village (3)	1.767
2C) Online feedback received: (5)	<b>5</b>
3) Service Level Progress on sanitation related parameters (35)	<b>24.75</b>
3a) Submission of self-assessment report by district (10)	9.75
3b) LoB Implementation/ If no LoB, then status of 2nd ODF verification (15)	15.00
3c) Construction of community toilets in SC/ST habitation (10)*	0

\*Data was not available in IMIS- hence excluded

# ANNEXURES 1 : SCORES OF TOP RANKED STATES AND DISTRICTS

State Summary Report

SWACHH SURVEKSHAN GRAMEEN - 2019						
Daman & Diu						
State Name	Gujarat	Maximum score	Total	Citizen Feedback	Direct Observation	Service Level Progress
No of Districts	2					
No of Villages covered	24	100	35	30	35	
National Rank	2nd	State Score	76.32	29.86	28.46	18
Category	Smaller State & UT					

## TOTAL SCORE

COMPONENT WISE SCORE	
1) Direct Observations of sanitation public places (30)	<b>28.46</b>
i. Accessibility of sanitation services (5)	4.833
ii. Usage of assets (5)	3.629
iv. Status of Littering in the public place (10)	10.000
v. Status of stagnant Water in the public place (10)	10.000
2) Citizen's Feedback (35)	<b>29.86</b>
2a) Feedback from ordinary Citizens (F2F+IVR+GFB) (20)	<b>16.878</b>
i. Awareness about SSG 2018 (2)	1.623
ii. Improvement in cleanliness since the implementation of SBM (6)	4.861
iii. Arrangements for safe disposal of solid waste (6)	5.210
iv. Arrangements for safe disposal of liquid waste (6)	5.182
2b) Feedback from Key Informants: (10)	<b>7.977</b>
i. Awareness about SSG 2018 (1)	0.94
ii. IEC activities conducted in village (3)	2.76
iii. Availability of liquid waste management in village (3)	2.04
iv. Availability of solid waste management in village (3)	2.23
2C) Online feedback received: (5)	<b>5</b>
3) Service Level Progress on sanitation related parameters (35)	<b>18</b>
3a) Submission of self-assessment report by district (10)	3
3b) LoB Implementation/ If no LoB, then status of 2nd ODF verification (15)	15
3c) Construction of community toilets in SC/ST habitation (10)*	0

\*Data was not available in IMIS- hence excluded

# ANNEXURES 1 : SCORES OF TOP RANKED STATES AND DISTRICTS

State Summary Report

SWACHH SURVEKSHAN GRAMEEN - 2019						
Sikkim						
State Name	Sikkim	Maximum score	Total	Citizen Feedback	Direct Observation	Service Level Progress
No of Districts	4					
No of Villages covered	88	100	35	30	35	
National Rank	3 <sup>rd</sup>	State Score	75.51	24.22	29.28	22
Category	Smaller State & UT					

## TOTAL SCORE

COMPONENT WISE SCORE	
1) Direct Observations of sanitation public places (30)	<b>29.284</b>
i. Accessibility of sanitation services (5)	4.852
ii. Usage of assets (5)	4.523
iv. Status of Littering in the public place (10)	9.932
v. Status of stagnant Water in the public place (10)	9.977
2) Citizen's Feedback (35)	<b>24.223</b>
2a) Feedback from ordinary Citizens (F2F+IVR+GFB) (20)	<b>16.089</b>
i. Awareness about SSG 2018 (2)	1.640
ii. Improvement in cleanliness since the implementation of SBM (6)	4.994
iii. Arrangements for safe disposal of solid waste (6)	4.793
iv. Arrangements for safe disposal of liquid waste (6)	4.661
2b) Feedback from Key Informants: (10)	<b>7.884</b>
i. Awareness about SSG 2018 (1)	0.847
ii. IEC activities conducted in village (3)	2.633
iii. Availability of liquid waste management in village (3)	2.058
iv. Availability of solid waste management in village (3)	2.352
2C) Online feedback received: (5)	<b>0.25</b>
3) Service Level Progress on sanitation related parameters (35)	<b>22</b>
3a) Submission of self-assessment report by district (10)	7
3b) LoB Implementation/ If no LoB, then status of 2nd ODF verification (15)	15
3c) Construction of community toilets in SC/ST habitation (10)*	0

\*Data was not available in IMIS- hence excluded

# ANNEXURES 1 : SCORES OF TOP RANKED STATES AND DISTRICTS

State Summary Report

SWACHH SURVEKSHAN GRAMEEN - 2019						
Peddapalli						
District Name	Peddapalli		Total	Citizen Feedback	Direct Observation	Service Level Progress
State Name	Telangana					
No of Villages covered	23	Maximum score	100	35	30	35
National Rank	1st	District Score	<b>89.0864</b>	<b>34.12</b>	<b>29.963</b>	<b>25</b>

## TOTAL SCORE

COMPONENT WISE SCORE	
1) Direct Observations of sanitation public places (30)	<b>29.963</b>
i. Accessibility of sanitation services (5)	5.000
ii. Usage of assets (5)	4.964
iv. Status of Littering in the public place (10)	10.000
v. Status of stagnant Water in the public place (10)	10.000
2) Citizen's Feedback (35)	<b>34.12</b>
2a) Feedback from ordinary Citizens (F2F+IVR+GFB) (20)	<b>19.168</b>
i. Awareness about SSG 2018 (2)	1.973
ii. Improvement in cleanliness since the implementation of SBM (6)	5.718
iii. Arrangements for safe disposal of solid waste (6)	5.756
iv. Arrangements for safe disposal of liquid waste (6)	5.719
2b) Feedback from Key Informants: (10)	<b>9.954</b>
i. Awareness about SSG 2018 (1)	0.997
ii. IEC activities conducted in village (3)	3.000
iii. Availability of liquid waste management in village (3)	2.960
iv. Availability of solid waste management in village (3)	2.995
2C) Online feedback received: (5)	<b>5</b>
3) Service Level Progress on sanitation related parameters (35)	<b>25</b>
3a) Submission of self-assessment report by district (10)	10
3b) LoB Implementation/ If no LoB, then status of 2nd ODF verification (15)	15
3c) Construction of community toilets in SC/ST habitation (10)*	0

\*Data was not available in IMIS- hence excluded

# ANNEXURES 1 : SCORES OF TOP RANKED STATES AND DISTRICTS

State Summary Report

SWACHH SURVEKSHAN GRAMEEN - 2019						
Faridabad						
District Name	Faridabad	Maximum score	Total	Citizen Feedback	Direct Observation	Service Level Progress
State Name	Haryana					
No of Villages covered	23		100	35	30	35
National Rank	2nd	District Score	<b>89.0861</b>	<b>34.37</b>	<b>29.65</b>	<b>25</b>

## TOTAL SCORE

COMPONENT WISE SCORE	
1) Direct Observations of sanitation public places (30)	<b>29.65</b>
i. Accessibility of sanitation services (5)	4.902
ii. Usage of assets (5)	4.898
iv. Status of Littering in the public place (10)	9.85
v. Status of stagnant Water in the public place (10)	10.000
2) Citizen's Feedback (35)	<b>37.378</b>
2a) Feedback from ordinary Citizens (F2F+IVR+GFB) (20)	<b>19.631</b>
i. Awareness about SSG 2018 (2)	1.999
ii. Improvement in cleanliness since the implementation of SBM (6)	5.818
iii. Arrangements for safe disposal of solid waste (6)	5.896
iv. Arrangements for safe disposal of liquid waste (6)	5.918
2b) Feedback from Key Informants: (10)	<b>9.747</b>
i. Awareness about SSG 2018 (1)	0.985
ii. IEC activities conducted in village (3)	2.978
iii. Availability of liquid waste management in village (3)	2.966
iv. Availability of solid waste management in village (3)	2.818
2C) Online feedback received: (5)	<b>5</b>
3) Service Level Progress on sanitation related parameters (35)	<b>25</b>
3a) Submission of self-assessment report by district (10)	10
3b) LoB Implementation/ If no LoB, then status of 2nd ODF verification (15)	15
3c) Construction of community toilets in SC/ST habitation (10)*	0

\*Data was not available in IMIS- hence excluded

# ANNEXURES 1 : SCORES OF TOP RANKED STATES AND DISTRICTS

State Summary Report

SWACHH SURVEKSHAN GRAMEEN - 2019						
Rewari						
District Name	Rewari		Total	Citizen Feedback	Direct Observation	Service Level Progress
State Name	Haryana					
No of Villages covered	23	Maximum score	100	35	30	35
National Rank	3 <sup>rd</sup>	District Score	<b>89.0185</b>	<b>34.27</b>	<b>29.652</b>	<b>25</b>

## TOTAL SCORE

COMPONENT WISE SCORE	
1) Direct Observations of sanitation public places (30)	<b>29.652</b>
i. Accessibility of sanitation services (5)	5.000
ii. Usage of assets (5)	4.652
iv. Status of Littering in the public place (10)	10.000
v. Status of stagnant Water in the public place (10)	10.000
2) Citizen's Feedback (35)	<b>34.27</b>
2a) Feedback from ordinary Citizens (F2F+IVR+GFB) (20)	<b>19.54</b>
i. Awareness about SSG 2018 (2)	1.997
ii. Improvement in cleanliness since the implementation of SBM (6)	5.888
iii. Arrangements for safe disposal of solid waste (6)	5.879
iv. Arrangements for safe disposal of liquid waste (6)	5.776
2b) Feedback from Key Informants: (10)	<b>9.733</b>
i. Awareness about SSG 2018 (1)	0.989
ii. IEC activities conducted in village (3)	2.989
iii. Availability of liquid waste management in village (3)	2.866
iv. Availability of solid waste management in village (3)	2.889
2C) Online feedback received: (5)	<b>5</b>
3) Service Level Progress on sanitation related parameters (35)	<b>25</b>
3a) Submission of self-assessment report by district (10)	10
3b) LoB Implementation/ If no LoB, then status of 2nd ODF verification (15)	15
3c) Construction of community toilets in SC/ST habitation (10)*	0

\*Data was not available in IMIS- hence excluded

## ANNEXURES 2 : SCORES OF DISTRICTS COVERED IN THE SURVEY

SG-19						
Rank	District Name	State Name	Total Score (100)	Direct Observation (30)	Citizen Feedback (35)	Service level Progress (35)
1	Peddapalli	Telangana	89.0864	29.96	34.12	25
2	Faridabad	Haryana	89.0861	29.50	34.59	25
3	Rewari	Haryana	89.0185	29.65	34.37	25
4	Patan	Gujarat	88.8663	29.96	33.91	25
5	Mahendragarh	Haryana	88.5612	29.36	34.20	25
6	Charki Dadri	Haryana	88.2537	28.93	34.32	25
7	Thoothukudi	Tamil Nadu	88.1212	29.88	34.24	24
8	Bhiwani	Haryana	87.9336	28.54	34.39	25
9	Dindigul	Tamil Nadu	87.7167	29.73	33.98	24
10	Mahisagar	Gujarat	87.6130	29.16	33.45	25
11	Jagtial	Telangana	87.3125	29.36	32.95	25
12	Karnal	Haryana	87.0789	29.13	32.95	25
13	Tiruvarur	Tamil Nadu	87.0505	30.00	32.05	25
14	Rajanna Siricilla	Telangana	87.0350	29.50	32.53	25
15	Panch Mahals	Gujarat	86.8315	28.87	32.96	25
16	Kanchipuram	Tamil Nadu	86.6920	29.64	33.05	24
17	Karimnagar	Telangana	86.6516	29.76	32.89	24
18	Villupuram	Tamil Nadu	86.6450	29.67	32.98	24
19	Nilgiris(udhagamandalam)	Tamil Nadu	86.6113	29.28	32.34	25
20	Thanjavur	Tamil Nadu	86.5381	29.32	33.22	24
21	Salem	Tamil Nadu	86.3286	29.29	33.04	24
22	Rohtak	Haryana	86.1991	29.07	32.13	25
23	Warangal	Telangana	86.1685	27.34	33.83	25
24	Kaithal	Haryana	85.7299	29.08	34.65	22
25	Gurgaon	Haryana	85.7207	29.77	33.95	22
26	Gorakhpur	Uttar Pradesh	85.6658	28.74	31.93	25
27	Namakkal	Tamil Nadu	85.6641	29.62	32.05	24
28	Kanshiram Nagar (Kasganj)	Uttar Pradesh	85.6347	27.44	33.20	25
29	Farrukhabad	Uttar Pradesh	85.5602	26.98	33.58	25
30	Firozabad	Uttar Pradesh	85.5384	27.25	33.29	25
31	Yamunanagar	Haryana	85.3426	27.52	32.83	25
32	Hapur	Uttar Pradesh	85.3153	27.58	33.73	24
33	Kolasib	Mizoram	85.2191	28.12	32.09	25
34	Wanaparthy	Telangana	85.2109	28.44	31.77	25
35	Krishnagiri	Tamil Nadu	85.1403	29.74	33.40	22
36	Coimbatore	Tamil Nadu	84.9785	28.89	32.09	24

SG-19						
Rank	District Name	State Name	Total Score (100)	Direct Observation (30)	Citizen Feedback (35)	Service level Progress (35)
37	Gir Somnath	Gujarat	84.7508	27.91	31.84	25
38	Madurai	Tamil Nadu	84.7037	26.43	33.27	25
39	Kamareddy	Telangana	84.6879	27.34	32.35	25
40	Kanyakumari(nagercoil)	Tamil Nadu	84.3706	29.92	33.45	21
41	Nashik	Maharashtra	84.2951	29.17	31.13	24
42	Sindhudurg	Maharashtra	84.2930	28.57	30.72	25
43	Shravasti	Uttar Pradesh	84.1870	26.83	32.36	25
44	Tiruvannamalai	Tamil Nadu	84.0899	28.29	31.80	24
45	Ariyalur	Tamil Nadu	84.0800	28.68	31.40	24
46	Khunti	Jharkhand	84.0570	28.43	30.62	25
47	Devbhoomi Dwarka	Gujarat	84.0429	27.79	32.25	24
48	Mahamaya Nagar(hathras)	Uttar Pradesh	83.9530	25.54	34.42	24
49	Dumka	Jharkhand	83.9165	25.64	33.28	25
50	Vellore	Tamil Nadu	83.8218	29.55	32.27	22
51	Simdega	Jharkhand	83.6582	28.82	29.84	25
52	Tiruppur	Tamil Nadu	83.6351	28.98	30.65	24
53	Serchhip	Mizoram	83.6033	28.47	30.13	25
54	Tirunelveli	Tamil Nadu	83.5408	29.38	29.16	25
55	Tiruchirappalli	Tamil Nadu	83.5126	29.13	33.38	21
56	Pakur	Jharkhand	83.4668	27.02	31.44	25
57	Shamli	Uttar Pradesh	83.4475	26.61	31.84	25
58	Tiruvallur	Tamil Nadu	83.2610	29.01	33.25	21
59	Kurukshetra	Haryana	83.2460	29.08	34.17	20
60	Aizawl	Mizoram	83.1766	28.09	30.09	25
61	Porbandar	Gujarat	83.1648	28.48	29.69	25
62	Ramanathapuram	Tamil Nadu	83.0275	28.15	32.88	22
63	Vadodara	Gujarat	82.9888	28.81	29.17	25
64	Panipat	Haryana	82.9832	29.78	34.21	19
65	Dharmapuri	Tamil Nadu	82.7425	28.20	32.55	22
66	Khammam	Telangana	82.4777	27.31	30.17	25
67	Sirsa	Haryana	82.4259	29.81	33.62	19
68	Karur	Tamil Nadu	82.1836	29.18	32.00	21
69	Korba	Chhattisgarh	82.0583	29.38	27.67	25
70	Etawah	Uttar Pradesh	81.9304	25.08	31.85	25
71	Surat	Gujarat	81.9154	26.23	30.68	25
72	Warangal Rural	Telangana	81.8390	28.97	27.87	25
73	Sonbhadra	Uttar Pradesh	81.7742	24.88	32.89	24
74	Rudraprayag	Uttarakhand	81.7024	25.40	31.30	25
75	Theni	Tamil Nadu	81.6623	29.96	32.70	19
76	Rajkot	Gujarat	81.6467	26.56	30.09	25
77	Deoghar	Jharkhand	81.6345	26.28	31.35	24



SG-19						
Rank	District Name	State Name	Total Score (100)	Direct Observation (30)	Citizen Feedback (35)	Service level Progress (35)
78	Giridih	Jharkhand	81.4287	26.83	30.60	24
79	Palwal	Haryana	81.3831	28.82	32.57	20
80	Bulandshahr	Uttar Pradesh	81.3172	26.20	31.11	24
81	Pudukkottai	Tamil Nadu	81.1798	26.09	32.09	23
82	Champhai	Mizoram	81.1686	26.19	29.98	25
83	Bijnor	Uttar Pradesh	81.0529	25.27	32.79	23
84	Maharajganj	Uttar Pradesh	80.9722	25.14	31.84	24
85	Daman	Daman & Diu	80.9117	29.09	30.82	21
86	Lunglei	Mizoram	80.7174	25.14	30.58	25
87	Satara	Maharashtra	80.6502	29.14	29.51	22
88	Mungeli	Chhattisgarh	80.6216	25.26	30.36	25
89	Sivaganga	Tamil Nadu	80.5496	25.44	33.11	22
90	Dangs	Gujarat	80.4943	27.23	31.27	22
91	Erode	Tamil Nadu	80.4130	28.88	30.53	21
92	Mandsaur	Madhya Pradesh	80.3962	26.03	29.36	25
93	Junagadh	Gujarat	80.3878	27.05	28.33	25
94	Virudhunagar	Tamil Nadu	80.3683	28.56	29.81	22
95	Mamit	Mizoram	80.3524	25.49	30.86	24
96	Sant Ravidas Nagar (Bhadohi)	Uttar Pradesh	80.3188	24.22	31.10	25
97	Jamnagar	Gujarat	80.1613	26.26	28.90	25
98	East Godavari	Andhra Pradesh	80.1496	24.81	30.34	25
99	Nizamabad	Telangana	79.9851	24.37	30.61	25
100	Kanker	Chhattisgarh	79.8576	26.39	28.47	25
101	Hamirpur	Uttar Pradesh	79.8557	25.59	32.27	22
102	Ranchi	Jharkhand	79.8325	26.08	28.75	25
103	Balrampur	Uttar Pradesh	79.7923	24.02	30.77	25
104	Agra	Uttar Pradesh	79.7678	24.47	30.29	25
105	Tapi	Gujarat	79.7143	26.57	31.14	22
106	Navsari	Gujarat	79.6755	26.99	27.68	25
107	Kondagaon	Chhattisgarh	79.6549	28.65	26.00	25
108	Bahraich	Uttar Pradesh	79.6025	25.07	30.53	24
109	Kolhapur	Maharashtra	79.5092	28.32	26.19	25
110	Mehsana	Gujarat	79.5020	25.31	29.19	25
111	Baran	Rajasthan	79.3990	24.61	29.79	25
112	Gumla	Jharkhand	79.2522	28.25	26.00	25
113	Cuddalore	Tamil Nadu	79.0462	26.61	31.44	21
114	Lalitpur	Uttar Pradesh	78.9856	26.05	30.94	22
115	Tarn Taran	Punjab	78.8957	29.96	26.94	22
116	Mainpuri	Uttar Pradesh	78.8842	23.72	31.16	24
117	Gonda	Uttar Pradesh	78.8096	25.55	32.26	21
118	Moradabad	Uttar Pradesh	78.7938	23.86	30.93	24

SG-19						
Rank	District Name	State Name	Total Score (100)	Direct Observation (30)	Citizen Feedback (35)	Service level Progress (35)
119	Anand	Gujarat	78.7383	27.62	29.12	22
120	Hazaribagh	Jharkhand	78.6267	25.25	28.38	25
121	Mahoba	Uttar Pradesh	78.6259	24.16	30.47	24
122	Thiruvananthapuram	Kerala	78.5836	29.16	25.42	24
123	Chhotaudepur	Gujarat	78.5292	29.63	23.90	25
124	Mahbubnagar	Telangana	78.4799	26.65	29.83	22
125	S.A.S Nagar	Punjab	78.4307	28.13	25.30	25
126	Paschim Singhbhum	Jharkhand	78.3340	27.56	30.78	20
127	Surendranagar	Gujarat	78.3036	27.86	33.44	17
128	Perambalur	Tamil Nadu	78.2217	28.40	30.82	19
129	Ghaziabad	Uttar Pradesh	78.2183	25.72	30.49	22
130	Purbi Singhbhum	Jharkhand	78.1089	25.82	32.29	20
131	Gwalior	Madhya Pradesh	78.0902	27.21	25.88	25
132	Mau	Uttar Pradesh	77.9162	22.68	30.23	25
133	Rampur	Uttar Pradesh	77.7453	26.74	31.00	20
134	Almora	Uttarakhand	77.6125	27.43	25.18	25
135	Jind	Haryana	77.5679	28.07	31.50	18
136	Chandrapur	Maharashtra	77.5665	27.82	27.75	22
137	Kushinagar	Uttar Pradesh	77.4895	25.17	30.32	22
138	Bagpat	Uttar Pradesh	77.4480	24.97	31.47	21
139	Kheda	Gujarat	77.4105	28.65	23.76	25
140	Moga	Punjab	77.4008	25.57	26.84	25
141	Ahmedabad	Gujarat	77.3847	28.26	27.13	22
142	Sultanpur	Uttar Pradesh	77.3706	21.90	30.47	25
143	Hisar	Haryana	77.3676	29.75	27.62	20
144	Barnala	Punjab	77.3486	27.91	24.44	25
145	Seraikela Kharsawan	Jharkhand	77.2501	24.37	27.88	25
146	Dhanbad	Jharkhand	77.1211	21.82	30.30	25
147	Ramgarh	Jharkhand	77.0852	25.21	26.87	25
148	Lawngtlai	Mizoram	77.0567	23.52	29.53	24
149	Aravalli	Gujarat	77.0064	28.52	23.48	25
150	Saiha	Mizoram	76.8576	22.95	28.90	25
151	Lohardaga	Jharkhand	76.8245	27.74	24.09	25
152	Botad	Gujarat	76.7225	25.72	31.00	20
153	Lakhimpur Kheri	Uttar Pradesh	76.7185	23.45	32.27	21
154	North Sikkim	Sikkim	76.6053	29.91	24.70	22
155	Garhwa	Jharkhand	76.6004	21.28	30.32	25
156	Sambhal	Uttar Pradesh	76.5915	25.00	32.59	19
157	Kannur	Kerala	76.5127	29.70	24.81	22
158	Nainital	Uttarakhand	76.4498	24.86	26.59	25
159	Jhansi	Uttar Pradesh	76.4203	24.82	30.60	21

SG-19						
Rank	District Name	State Name	Total Score (100)	Direct Observation (30)	Citizen Feedback (35)	Service level Progress (35)
160	Chandauli	Uttar Pradesh	76.4035	24.24	31.17	21
161	Ambala	Haryana	76.3040	29.01	32.29	15
162	Kapurthala	Punjab	76.2626	27.57	23.70	25
163	Deoria	Uttar Pradesh	76.2561	26.57	30.69	19
164	Nellore	Andhra Pradesh	76.2241	23.74	27.49	25
165	Udaipur	Rajasthan	76.1565	25.41	25.74	25
166	Ludhiana	Punjab	76.0388	24.55	26.48	25
167	Rae Bareli	Uttar Pradesh	76.0270	22.23	30.80	23
168	Jangaon	Telangana	76.0257	29.26	32.76	14
169	Balod	Chhattisgarh	75.9910	23.69	30.30	22
170	South Sikkim	Sikkim	75.9890	29.45	24.53	22
171	Narmada	Gujarat	75.9538	28.74	25.21	22
172	Gautam Buddha Nagar	Uttar Pradesh	75.9515	24.08	29.87	22
173	Mirzapur	Uttar Pradesh	75.8880	21.86	29.03	25
174	Kottayam	Kerala	75.8542	28.73	22.13	25
175	Banda	Uttar Pradesh	75.8254	22.42	29.40	24
176	Pilibhit	Uttar Pradesh	75.6872	21.84	28.85	25
177	Guntur	Andhra Pradesh	75.6228	23.98	28.64	23
178	Katni	Madhya Pradesh	75.5861	24.77	25.82	25
179	Harda	Madhya Pradesh	75.5214	24.56	30.96	20
180	Mewat	Haryana	75.5012	28.87	26.63	20
181	Chitrakoot	Uttar Pradesh	75.4856	24.91	32.57	18
182	Cooch Behar	West Bengal	75.3368	29.07	24.27	22
183	Sahibganj	Jharkhand	75.2533	26.31	23.95	25
184	East Sikkim	Sikkim	75.1666	28.36	24.80	22
185	Surajpur	Chhattisgarh	75.1655	29.37	31.79	14
186	Vikarabad	Telangana	75.0473	22.62	30.43	22
187	Kaushambi	Uttar Pradesh	75.0455	24.24	25.80	25
188	Kachchh	Gujarat	74.9967	26.29	26.71	22
189	Datia	Madhya Pradesh	74.9566	24.23	25.73	25
190	Bengaluru Rural	Karnataka	74.9389	22.88	28.06	24
191	Dahod	Gujarat	74.9330	28.59	24.34	22
192	Jalandhar	Punjab	74.7826	23.80	25.98	25
193	Ujjain	Madhya Pradesh	74.7810	23.88	25.90	25
194	Basti	Uttar Pradesh	74.7718	22.99	30.78	21
195	Mathura	Uttar Pradesh	74.7348	26.84	32.89	15
196	Raipur	Chhattisgarh	74.6280	26.96	27.66	20
197	Jhajjar	Haryana	74.5892	27.55	32.03	15
198	Amritsar	Punjab	74.4804	25.25	24.23	25
199	Nawanshahr	Punjab	74.4788	25.44	24.04	25
200	Wayanad	Kerala	74.4345	27.96	21.47	25

SG-19						
Rank	District Name	State Name	Total Score (100)	Direct Observation (30)	Citizen Feedback (35)	Service level Progress (35)
201	Akola	Maharashtra	74.4222	27.24	22.18	25
202	Bageshwar	Uttarakhand	74.3207	22.62	26.70	25
203	West Sikkim	Sikkim	74.2703	29.41	22.86	22
204	Krishna	Andhra Pradesh	74.2514	22.34	26.91	25
205	Dindori	Madhya Pradesh	74.2344	25.68	23.55	25
206	Panchkula	Haryana	74.2334	27.73	29.50	17
207	Mancherial	Telangana	74.1699	28.85	26.32	19
208	Prakasam	Andhra Pradesh	74.0703	25.06	26.01	23
209	Tehri Garhwal	Uttarakhand	73.9920	24.11	24.88	25
210	Nagapattinam	Tamil Nadu	73.9839	28.70	30.28	15
211	Rupnagar	Punjab	73.9676	27.00	24.97	22
212	Latur	Maharashtra	73.8731	26.85	25.02	22
213	Bharuch	Gujarat	73.8152	27.11	26.71	20
214	Kangra	Himachal Pradesh	73.7555	26.82	21.93	25
215	Siddharthnagar	Uttar Pradesh	73.7408	21.60	30.14	22
216	Bhilwara	Rajasthan	73.7407	25.10	23.64	25
217	Raigad	Maharashtra	73.7342	27.87	23.87	22
218	Sant Kabir Nagar	Uttar Pradesh	73.6930	23.50	29.19	21
219	Dehradun	Uttarakhand	73.6727	23.79	24.88	25
220	Pauri(garhwal)	Uttarakhand	73.6513	24.93	26.72	22
221	Chikkaballapura	Karnataka	73.6510	24.58	24.07	25
222	Thrissur	Kerala	73.6399	28.98	20.66	24
223	Jaunpur	Uttar Pradesh	73.6269	25.67	25.95	22
224	Varanasi	Uttar Pradesh	73.5751	22.30	30.28	21
225	Meerut	Uttar Pradesh	73.5602	23.74	31.82	18
226	Hardoi	Uttar Pradesh	73.5472	25.44	27.11	21
227	Pali	Rajasthan	73.5410	25.71	27.83	20
228	Gadag	Karnataka	73.5168	26.61	25.90	21
229	Latehar	Jharkhand	73.5130	17.96	30.56	25
230	Narsinghpur	Madhya Pradesh	73.4727	25.30	23.17	25
231	Baloda Bazar	Chhattisgarh	73.4094	27.70	31.71	14
232	Unnao	Uttar Pradesh	73.3788	23.77	28.61	21
233	Surguja	Chhattisgarh	73.3756	29.92	33.46	10
234	Bilaspur	Himachal Pradesh	73.3721	26.37	22.00	25
235	Faizabad	Uttar Pradesh	73.3294	22.60	31.73	19
236	Patiala	Punjab	73.2759	23.13	25.14	25
237	Muzaffarnagar	Uttar Pradesh	73.2751	26.96	31.32	15
238	Godda	Jharkhand	73.2248	24.54	26.68	22
239	Ganganagar	Rajasthan	73.1980	25.54	22.65	25
240	Thane	Maharashtra	73.0750	24.88	23.19	25
241	Bengaluru Urban	Karnataka	72.9740	25.12	23.85	24
242	Amethi	Uttar Pradesh	72.9500	21.96	32.99	18

SG-19						
Rank	District Name	State Name	Total Score (100)	Direct Observation (30)	Citizen Feedback (35)	Service level Progress (35)
243	Idukki	Kerala	72.9428	28.94	20.00	24
244	Udham Singh Nagar	Uttarakhand	72.9053	22.49	25.42	25
245	Sehore	Madhya Pradesh	72.8769	26.70	24.17	22
246	Hooghly	West Bengal	72.7135	26.93	20.78	25
247	Azamgarh	Uttar Pradesh	72.5678	24.92	32.64	15
248	Damoh	Madhya Pradesh	72.5312	25.09	22.44	25
249	Burhanpur	Madhya Pradesh	72.5251	24.99	22.54	25
250	Jalaun	Uttar Pradesh	72.4729	21.46	30.01	21
251	Solapur	Maharashtra	72.2342	26.05	27.19	19
252	Bundi	Rajasthan	72.0516	23.69	26.36	22
253	Kurnool	Andhra Pradesh	71.9744	18.29	28.68	25
254	Palakkad	Kerala	71.9236	29.60	19.33	23
255	Udupi	Karnataka	71.8979	28.02	27.87	16
256	Fatehgarh Sahib	Punjab	71.8665	26.33	25.54	20
257	Diu	Daman & Diu	71.7249	27.83	28.89	15
258	Nagpur	Maharashtra	71.6675	27.37	22.30	22
259	Bareilly	Uttar Pradesh	71.5866	24.23	28.36	19
260	Cuddapah	Andhra Pradesh	71.5717	19.10	27.47	25
261	Banas Kantha	Gujarat	71.5612	28.37	27.19	16
262	Bhavnagar	Gujarat	71.4839	26.98	24.50	20
263	Balrampur	Chhattisgarh	71.3811	28.75	24.63	18
264	Shajapur	Madhya Pradesh	71.3001	24.05	22.25	25
265	Rajnandgaon	Chhattisgarh	71.2238	27.12	28.11	16
266	Fatehabad	Haryana	71.2091	29.32	28.89	13
267	Allahabad	Uttar Pradesh	71.1221	21.36	28.77	21
268	Sonipat	Haryana	71.1157	27.26	21.86	22
269	Vizianagaram	Andhra Pradesh	71.0696	21.54	27.53	22
270	Sangrur	Punjab	71.0624	26.58	24.49	20
271	Mangalore(dakshina Kannada)	Karnataka	71.0209	27.26	21.76	22
272	Saharanpur	Uttar Pradesh	70.9636	23.93	32.03	15
273	Mandi	Himachal Pradesh	70.9363	26.49	20.45	24
274	Barwani	Madhya Pradesh	70.8457	23.03	26.82	21
275	Vijayapur	Karnataka	70.7837	25.14	23.64	22
276	Bathinda	Punjab	70.7310	29.57	27.17	14
277	Kanpur Dehat	Uttar Pradesh	70.7308	24.26	30.47	16
278	Osmanabad	Maharashtra	70.6801	24.89	23.79	22
279	Pune	Maharashtra	70.6789	22.44	26.24	22
280	Jyotiba Phule Nagar (Amroha)	Uttar Pradesh	70.6635	23.22	29.44	18
281	Shivpuri	Madhya Pradesh	70.6620	24.09	21.57	25
282	Kozhikode	Kerala	70.5831	29.08	22.50	19
283	Rajgarh	Madhya Pradesh	70.5657	22.20	23.37	25

SG-19						
Rank	District Name	State Name	Total Score (100)	Direct Observation (30)	Citizen Feedback (35)	Service level Progress (35)
284	Kasargod	Kerala	70.5058	29.21	19.30	22
285	Haridwar	Uttarakhand	70.4923	27.81	26.68	16
286	Balaghat	Madhya Pradesh	70.4321	24.77	20.67	25
287	Koppal	Karnataka	70.3927	23.79	26.60	20
288	Pithoragarh	Uttarakhand	70.2776	23.63	26.65	20
289	Shahjahanpur	Uttar Pradesh	70.2645	23.75	31.51	15
290	South 24 Paraganas	West Bengal	70.2172	26.05	22.17	22
291	Jamtara	Jharkhand	70.2085	22.22	25.98	22
292	Seoni	Madhya Pradesh	70.1956	28.54	21.66	20
293	Medchal	Telangana	70.1894	26.01	30.18	14
294	Kollam	Kerala	70.1636	28.03	23.13	19
295	Dholpur	Rajasthan	70.0939	23.62	26.47	20
296	Amreli	Gujarat	70.0781	27.22	26.86	16
297	Nalgonda	Telangana	70.0757	28.99	29.09	12
298	Chikkamagaluru	Karnataka	70.0159	23.34	24.68	22
299	Kanpur Nagar	Uttar Pradesh	69.9666	25.26	24.71	20
300	Morena	Madhya Pradesh	69.8014	24.86	22.94	22
301	Valsad	Gujarat	69.7621	27.17	27.59	15
302	Uttarkashi	Uttarakhand	69.7134	25.26	29.45	15
303	Beed	Maharashtra	69.6959	22.64	25.05	22
304	Auraiya	Uttar Pradesh	69.6311	23.48	31.15	15
305	Kannauj	Uttar Pradesh	69.6086	25.50	29.11	15
306	Barabanki	Uttar Pradesh	69.5940	24.21	30.39	15
307	Bikaner	Rajasthan	69.5911	27.83	21.76	20
308	Mandla	Madhya Pradesh	69.5475	25.67	18.87	25
309	Hingoli	Maharashtra	69.4801	23.51	24.97	21
310	Ambedkar Nagar	Uttar Pradesh	69.3969	23.07	31.33	15
311	Ratnagiri	Maharashtra	69.3954	24.29	23.11	22
312	Hoshangabad	Madhya Pradesh	69.3566	26.69	20.67	22
313	Hamirpur	Himachal Pradesh	69.3116	27.04	21.27	21
314	Wardha	Maharashtra	69.2727	27.58	22.69	19
315	Buldhana	Maharashtra	69.1333	25.67	21.47	22
316	Medak	Telangana	69.1052	23.73	25.37	20
317	Gadchiroli	Maharashtra	69.0418	26.40	22.64	20
318	Chittoor	Andhra Pradesh	69.0034	18.74	25.26	25
319	Chhindwara	Madhya Pradesh	68.9345	27.39	20.54	21
320	Etah	Uttar Pradesh	68.8841	24.01	26.88	18
321	Bhind	Madhya Pradesh	68.8819	25.86	21.03	22
322	Guna	Madhya Pradesh	68.8429	23.49	23.36	22
323	Koderma	Jharkhand	68.8071	19.28	24.53	25
324	Jaisalmer	Rajasthan	68.7782	27.82	24.96	16
325	Amravati	Maharashtra	68.6901	27.30	22.39	19

SG-19						
Rank	District Name	State Name	Total Score (100)	Direct Observation (30)	Citizen Feedback (35)	Service level Progress (35)
326	Aligarh	Uttar Pradesh	68.6535	23.76	29.89	15
327	Jaipur	Rajasthan	68.6420	26.73	25.91	16
328	Neemuch	Madhya Pradesh	68.6286	26.81	19.82	22
329	Jayashankar Bhupalapally	Telangana	68.6157	27.33	27.29	14
330	Kodagu	Karnataka	68.6078	26.41	25.20	17
331	Yavatmal	Maharashtra	68.5913	25.57	21.02	22
332	Durg	Chhattisgarh	68.5748	25.67	28.91	14
333	Bilaspur	Chhattisgarh	68.5508	27.29	31.26	10
334	Hoshiarpur	Punjab	68.5423	25.64	26.90	16
335	Alipuduar	West Bengal	68.5261	25.10	18.42	25
336	Gandhinagar	Gujarat	68.5029	26.18	22.32	20
337	Jhabua	Madhya Pradesh	68.4076	24.68	21.73	22
338	Morbi	Gujarat	68.3258	25.77	22.56	20
339	Kinnaur	Himachal Pradesh	68.2867	27.64	22.65	18
340	Budaun	Uttar Pradesh	68.2859	22.82	30.46	15
341	Siddipet	Telangana	68.2741	25.87	26.40	16
342	Fatehpur	Uttar Pradesh	68.2161	27.33	25.88	15
343	Tawang	Arunachal Pradesh	68.1444	20.23	28.91	19
344	Lucknow	Uttar Pradesh	68.1367	22.20	30.93	15
345	Sabar Kantha	Gujarat	68.1046	27.46	25.64	15
346	Malappuram	Kerala	68.0554	29.02	21.04	18
347	Palamu	Jharkhand	68.0482	17.97	25.08	25
348	Janjgir - Champa	Chhattisgarh	67.9208	29.02	13.90	25
349	Mahabubabad	Telangana	67.9127	23.12	30.79	14
350	Leh (Ladakh)	Jammu & Kashmir	67.8794	24.95	21.93	21
351	Una	Himachal Pradesh	67.8680	26.68	20.19	21
352	Jodhpur	Rajasthan	67.7047	25.82	21.88	20
353	Palghar	Maharashtra	67.6818	25.22	26.47	16
354	Pathankot	Punjab	67.4822	24.26	27.22	16
355	Chamoli	Uttarakhand	67.4665	23.19	26.28	18
356	Satna	Madhya Pradesh	67.3470	23.46	18.88	25
357	Bokaro	Jharkhand	67.2597	21.30	25.96	20
358	Ernakulam	Kerala	67.2440	29.32	22.92	15
359	Pratapgarh	Uttar Pradesh	67.1830	23.36	27.83	16
360	Jogulamba Gadwal	Telangana	67.1051	25.55	24.55	17
361	Rajauri	Jammu & Kashmir	67.0215	25.55	20.47	21
362	Chatra	Jharkhand	67.0124	22.87	26.15	18
363	Dadra And Nagar Haveli	D & N Haveli	66.9183	26.09	30.83	10
364	Ramanagara	Karnataka	66.8871	24.91	19.97	22
365	West Godavari	Andhra Pradesh	66.8340	19.30	27.54	20
366	Changlang	Arunachal Pradesh	66.7297	23.33	21.40	22
326	Aligarh	Uttar Pradesh	68.6535	23.76	29.89	15

SG-19						
Rank	District Name	State Name	Total Score (100)	Direct Observation (30)	Citizen Feedback (35)	Service level Progress (35)
367	Gondia	Maharashtra	66.6528	24.60	22.05	20
368	Ghazipur	Uttar Pradesh	66.5743	24.20	25.37	17
369	Jashpur	Chhattisgarh	66.5573	28.17	28.39	10
370	Visakhapatnam	Andhra Pradesh	66.5474	18.27	23.28	25
371	Shivamogga	Karnataka	66.4700	26.08	20.39	20
372	Jalgaon	Maharashtra	66.3747	22.47	21.90	22
373	West Kameng	Arunachal Pradesh	66.3142	23.06	22.26	21
374	Koriya	Chhattisgarh	66.3038	27.30	29.00	10
375	Sagar	Madhya Pradesh	66.1979	25.22	21.98	19
376	Sawai Madhopur	Rajasthan	66.1026	22.54	21.56	22
377	Jamui	Bihar	66.0931	24.33	19.77	22
378	Rewa	Madhya Pradesh	66.0620	24.52	19.54	22
379	Dausa	Rajasthan	66.0230	26.54	22.48	17
380	Bemetara	Chhattisgarh	66.0070	24.83	27.17	14
381	Hanumangarh	Rajasthan	65.9682	27.16	23.81	15
382	Dhar	Madhya Pradesh	65.9297	25.48	24.45	16
383	Tikamgarh	Madhya Pradesh	65.9230	22.85	18.07	25
384	Chirang	Assam	65.6288	22.36	25.27	18
385	Champawat	Uttarakhand	65.5426	23.96	29.58	12
386	Nirmal	Telangana	65.4389	22.58	28.86	14
387	Pathanamthitta	Kerala	65.4371	28.00	22.44	15
388	Betul	Madhya Pradesh	65.4234	28.66	21.77	15
389	Khargone	Madhya Pradesh	65.4170	22.01	23.41	20
390	Araria	Bihar	65.3778	24.45	18.93	22
391	Mansa	Punjab	65.3650	24.31	27.05	14
392	Dhule	Maharashtra	65.3600	23.65	19.71	22
393	Ballia	Uttar Pradesh	65.3359	24.07	24.27	17
394	Ashoknagar	Madhya Pradesh	65.3065	22.97	20.33	22
395	Dibang Valley	Arunachal Pradesh	65.2685	20.67	24.59	20
396	Khandwa(east Nimar)	Madhya Pradesh	65.2453	19.29	24.95	21
397	Ahmednagar	Maharashtra	65.2001	26.14	24.06	15
398	Haveri	Karnataka	65.1872	25.16	21.02	19
399	Kota	Rajasthan	65.1437	24.14	21.00	20
400	Raisen	Madhya Pradesh	65.0232	22.15	20.87	22
401	Vidisha	Madhya Pradesh	64.9645	22.50	18.46	24
402	Namsai	Arunachal Pradesh	64.9312	23.55	19.39	22
403	Karauli	Rajasthan	64.8358	24.66	20.18	20
404	Kargil	Jammu & Kashmir	64.7462	24.81	17.94	22
405	Udhampur	Jammu & Kashmir	64.4497	25.57	16.88	22
406	Aurangabad	Maharashtra	64.3869	22.57	19.82	22
407	Sheopur	Madhya Pradesh	64.3711	23.03	26.34	15



SG-19						
Rank	District Name	State Name	Total Score (100)	Direct Observation (30)	Citizen Feedback (35)	Service level Progress (35)
408	Sheikhpura	Bihar	64.2859	19.34	19.94	25
409	Komaram Bheem Asifabad	Telangana	64.0789	21.83	29.25	13
410	Siang	Arunachal Pradesh	64.0629	20.10	19.96	24
411	Sitapur	Uttar Pradesh	64.0335	21.35	27.68	15
412	Narayanpur	Chhattisgarh	63.8501	27.43	26.42	10
413	Banswara	Rajasthan	63.8019	26.35	22.46	15
414	Yadadri	Telangana	63.7334	25.15	31.58	7
415	Suryapet	Telangana	63.6678	25.74	26.92	11
416	Bhopal	Madhya Pradesh	63.6318	25.11	22.52	16
417	Sonitpur	Assam	63.3377	22.16	19.18	22
418	Sitamarhi	Bihar	63.3027	24.55	16.75	22
419	Pondicherry	Puducherry	63.2332	27.00	21.23	15
420	Kamrup Metropolitan	Assam	63.1960	21.51	25.69	16
421	Tumakuru	Karnataka	63.1921	25.48	21.71	16
422	Shahdol	Madhya Pradesh	63.1540	22.36	18.80	22
423	Adilabad	Telangana	63.1344	21.81	25.32	16
424	Nagarkurnool	Telangana	63.1109	24.71	24.40	14
425	Uttara Kannada	Karnataka	63.0983	26.09	20.01	17
426	Panna	Madhya Pradesh	63.0739	23.78	21.30	18
427	Muktsar	Punjab	62.9897	24.35	24.64	14
428	Alappuzha	Kerala	62.9749	28.03	19.95	15
429	Lower Subansiri	Arunachal Pradesh	62.7293	23.12	17.61	22
430	Upper Siang	Arunachal Pradesh	62.6027	22.24	18.37	22
431	Nadia	West Bengal	62.5810	22.16	18.43	22
432	Fazilka	Punjab	62.5781	23.37	25.21	14
433	Midnapur East	West Bengal	62.5474	26.92	21.63	14
434	Alwar	Rajasthan	62.5171	23.33	18.19	21
435	Upper Subansiri	Arunachal Pradesh	62.4656	20.45	20.02	22
436	Gurdaspur	Punjab	62.4025	26.20	26.20	10
437	Kishanganj	Bihar	62.3423	25.40	21.94	15
438	Chamarajanagara	Karnataka	62.3008	25.43	22.87	14
439	Reasi	Jammu & Kashmir	62.2953	24.99	16.30	21
440	Katihar	Bihar	62.2823	26.05	18.23	18
441	East Kameng	Arunachal Pradesh	62.2510	22.44	18.81	21
442	Mysuru	Karnataka	62.1796	20.32	19.86	22
443	Purba Bardhaman	West Bengal	62.0788	26.86	22.22	13
444	Howrah	West Bengal	62.0620	24.24	21.82	16
445	Badradri Kothagudem	Telangana	61.9893	21.25	24.74	16
446	Dewas	Madhya Pradesh	61.9834	23.42	22.56	16
447	Parbhani	Maharashtra	61.8595	22.92	25.94	13

SG-19						
Rank	District Name	State Name	Total Score (100)	Direct Observation (30)	Citizen Feedback (35)	Service level Progress (35)
448	Kullu	Himachal Pradesh	61.8412	27.50	20.34	14
449	Bijapur	Chhattisgarh	61.7812	29.18	26.60	6
450	Munger	Bihar	61.6964	22.64	18.06	21
451	Kolar	Karnataka	61.6245	22.27	17.36	22
452	East Siang	Arunachal Pradesh	61.5811	20.12	20.46	21
453	Kra-daadi	Arunachal Pradesh	61.5178	20.71	19.80	21
454	Anantapur	Andhra Pradesh	61.4390	17.40	25.04	19
455	Faridkot	Punjab	61.3712	23.27	24.11	14
456	West Siang	Arunachal Pradesh	61.3520	20.11	19.24	22
457	Hailakandi	Assam	61.1470	27.46	21.69	12
458	Gariyaband	Chhattisgarh	61.0944	26.12	24.97	10
459	Sangareddy	Telangana	61.0879	23.13	21.96	16
460	Anjaw	Arunachal Pradesh	60.9682	20.36	18.61	22
461	Nagaur	Rajasthan	60.9662	24.17	20.79	16
462	Ballari	Karnataka	60.9624	24.04	19.92	17
463	Indore	Madhya Pradesh	60.8955	21.74	20.15	19
464	Birbhum	West Bengal	60.8663	25.47	21.40	14
465	Kurung Kumey	Arunachal Pradesh	60.8193	21.23	19.59	20
466	Mandya	Karnataka	60.8017	22.42	20.38	18
467	Karaikal	Puducherry	60.7992	26.56	19.24	15
468	Jalna	Maharashtra	60.7924	21.86	18.93	20
469	Bongaigaon	Assam	60.7353	24.97	19.77	16
470	Nagaon	Assam	60.6702	22.44	22.23	16
471	Jhalawar	Rajasthan	60.6336	24.48	20.15	16
472	Bastar(jagdalpur)	Chhattisgarh	60.6285	27.48	26.15	7
473	Kathua	Jammu & Kashmir	60.5888	25.54	20.05	15
474	Agar Malwa	Madhya Pradesh	60.3160	22.79	22.53	15
475	Sukma	Chhattisgarh	60.2948	25.61	24.69	10
476	Sheohar	Bihar	60.1980	22.40	18.79	19
477	Mahasamund	Chhattisgarh	60.0359	25.04	21.99	13
478	Hassan	Karnataka	59.9385	23.47	17.46	19
479	Cachar	Assam	59.9239	27.40	22.52	10
480	Sirohi	Rajasthan	59.9176	24.58	23.33	12
481	Papum Pare	Arunachal Pradesh	59.8878	21.14	17.75	21
482	West Khasi Hills	Meghalaya	59.8683	25.49	20.38	14
483	Majuli	Assam	59.8134	24.87	21.94	13
484	East Khasi Hills	Meghalaya	59.7962	25.32	18.47	16
485	Siwan	Bihar	59.7391	21.49	18.25	20
486	Rangareddi	Telangana	59.6034	27.31	22.30	10
487	Raichur	Karnataka	59.5863	23.33	19.25	17
488	Churu	Rajasthan	59.5665	26.35	21.22	12
489	Raigarh	Chhattisgarh	59.5639	28.43	21.13	10

SG-19						
Rank	District Name	State Name	Total Score (100)	Direct Observation (30)	Citizen Feedback (35)	Service level Progress (35)
490	Ferozepur	Punjab	59.5444	23.52	22.03	14
491	Nandurbar	Maharashtra	59.4943	23.00	20.49	16
492	Nawada	Bihar	59.3761	23.40	15.97	20
493	Muzaffarpur	Bihar	59.3530	22.09	17.26	20
494	Murshidabad	West Bengal	59.3199	26.78	18.54	14
495	Ukhrul	Manipur	59.2710	23.69	16.58	19
496	Dibrugarh	Assam	59.2419	22.43	21.82	15
497	Nanded	Maharashtra	59.1175	19.13	19.98	20
498	Nalanda	Bihar	59.1010	23.84	17.26	18
499	Banka	Bihar	59.0826	24.48	21.60	13
500	Purba Champaran	Bihar	59.0559	21.04	19.01	19
501	Srikakulam	Andhra Pradesh	58.9467	20.57	23.37	15
502	Sikar	Rajasthan	58.9299	24.08	20.85	14
503	Dungarpur	Rajasthan	58.9137	25.35	23.56	10
504	Buxar	Bihar	58.8606	22.67	19.19	17
505	Purnia	Bihar	58.7648	22.15	17.61	19
506	Bhojpur	Bihar	58.7403	21.25	17.49	20
507	Tengnoupal	Manipur	58.6390	25.50	14.14	19
508	Sangli	Maharashtra	58.4843	23.27	21.22	14
509	Goalpara	Assam	58.4842	24.72	17.76	16
510	Jabalpur	Madhya Pradesh	58.4319	24.63	19.81	14
511	Dakshin Dinajpur	West Bengal	58.3607	25.70	18.66	14
512	Lohit	Arunachal Pradesh	58.3359	22.86	13.47	22
513	Kaimur(bhabua)	Bihar	58.2740	21.24	20.03	17
514	Bharatpur	Rajasthan	58.1659	23.72	21.45	13
515	Samastipur	Bihar	58.1026	24.08	17.03	17
516	Patna	Bihar	58.0473	21.16	16.88	20
517	Davangere	Karnataka	58.0423	24.62	21.42	12
518	Begusarai	Bihar	58.0252	20.86	17.17	20
519	Darbhanga	Bihar	57.7206	23.60	20.12	14
520	South West Khasi Hills	Meghalaya	57.6259	24.39	23.24	10
521	Bagalkot	Karnataka	57.5756	23.66	18.91	15
522	Anuppur	Madhya Pradesh	57.4217	21.69	18.74	17
523	Siliguri	West Bengal	57.4216	24.77	18.65	14
524	Yadgir	Karnataka	57.2868	21.96	18.33	17
525	Ratlam	Madhya Pradesh	57.2788	22.80	20.48	14
526	Belagavi	Karnataka	57.2207	25.08	22.14	10
527	Vaishali	Bihar	57.2062	20.27	16.93	20
528	Paschim Bardhaman	West Bengal	57.1858	26.48	20.71	10
529	Dharwad	Karnataka	57.1642	24.64	20.53	12
530	Jammu	Jammu & Kashmir	57.0847	22.74	16.35	18

SG-19						
Rank	District Name	State Name	Total Score (100)	Direct Observation (30)	Citizen Feedback (35)	Service level Progress (35)
531	Bhandara	Maharashtra	57.0560	23.29	23.76	10
532	Lakhimpur	Assam	56.8872	26.14	17.75	13
533	Alirajpur	Madhya Pradesh	56.8210	25.92	20.90	10
534	Rajsamand	Rajasthan	56.7854	26.85	23.93	6
535	Tonk	Rajasthan	56.7656	17.05	21.71	18
536	Madhepura	Bihar	56.5828	26.63	19.95	10
537	Jalpaiguri	West Bengal	56.4845	24.80	18.69	13
538	Nalbari	Assam	56.2866	24.74	17.54	14
539	Midnapur West	West Bengal	56.2789	26.01	20.27	10
540	Saharsa	Bihar	56.2456	20.24	16.01	20
541	Lower Dibang Valley	Arunachal Pradesh	55.9972	20.72	15.28	20
542	Madhubani	Bihar	55.9417	22.82	17.13	16
543	Khagaria	Bihar	55.8357	19.24	16.60	20
544	Shimla	Himachal Pradesh	55.7611	25.49	23.27	7
545	Kawardha(kabirdham)	Chhattisgarh	55.7145	29.05	21.66	5
546	Jalor	Rajasthan	55.7096	24.53	21.18	10
547	Pashchim Champaran	Bihar	55.7039	20.37	19.34	16
548	Darjeeling	West Bengal	55.6941	28.18	23.51	4
549	Aurangabad	Bihar	55.6042	20.52	16.09	19
550	Chandel	Manipur	55.5484	23.78	12.76	19
551	Darrang	Assam	55.4512	23.28	17.18	15
552	Arwal	Bihar	55.4481	22.25	17.20	16
553	Dantewada	Chhattisgarh	55.4103	24.71	23.70	7
554	Sasaram(rohtas)	Bihar	55.3713	19.54	17.84	18
555	Uttar Dinajpur	West Bengal	55.3139	23.52	17.79	14
556	Morigaon	Assam	55.1954	23.00	18.20	14
557	Bidar	Karnataka	55.1212	21.46	20.66	13
558	Gaya	Bihar	55.0835	20.30	14.79	20
559	Chhatarpur	Madhya Pradesh	55.0427	23.54	19.50	12
560	Longding	Arunachal Pradesh	54.9570	20.86	14.09	20
561	Gajapati	Odisha	54.9461	22.20	19.74	13
562	Sepahijala	Tripura	54.7073	23.37	20.34	11
563	Tinsukia	Assam	54.5414	21.42	15.12	18
564	Umaria	Madhya Pradesh	54.3899	20.99	17.40	16
565	Kalaburagi	Karnataka	54.3402	20.80	19.54	14
566	Tirap	Arunachal Pradesh	54.2410	21.67	15.57	17
567	East Jaintia Hills	Meghalaya	54.1738	22.40	21.77	10
568	Bhagalpur	Bihar	54.1417	21.00	14.15	19
569	Samba	Jammu & Kashmir	54.0434	25.17	16.87	12
570	Ajmer	Rajasthan	53.7895	24.01	20.78	9
571	Dhamtari	Chhattisgarh	53.6783	26.95	26.73	0

SG-19						
Rank	District Name	State Name	Total Score (100)	Direct Observation (30)	Citizen Feedback (35)	Service level Progress (35)
572	Gopalganj	Bihar	53.5930	20.28	17.32	16
573	Bankura	West Bengal	53.5767	25.64	20.93	7
574	Biswanath	Assam	53.5483	24.50	16.05	13
575	North Tripura	Tripura	53.5256	23.22	20.31	10
576	West Karbi Anglong	Assam	53.4174	20.01	15.41	18
577	Washim	Maharashtra	53.0421	19.81	18.23	15
578	Barmer	Rajasthan	53.0119	26.48	22.53	4
579	Jhunjhunu	Rajasthan	53.0034	26.89	22.11	4
580	Purulia	West Bengal	52.9028	24.72	19.18	9
581	Charaideo	Assam	52.8215	22.76	18.06	12
582	Saran	Bihar	52.7309	19.99	17.74	15
583	Nayagarh	Odisha	52.5432	23.24	19.31	10
584	Supaul	Bihar	52.3760	22.39	16.99	13
585	Gomati	Tripura	52.2971	24.31	20.99	7
586	South Andamans	A & N Islands	52.1765	27.99	24.19	0
587	Chittorgarh	Rajasthan	52.1737	23.00	19.17	10
588	Chitradurga	Karnataka	52.1700	22.54	17.63	12
589	Lakhisarai	Bihar	52.0729	19.81	16.26	16
590	Dhubri	Assam	52.0640	27.38	15.68	9
591	Hojai	Assam	52.0636	21.56	16.50	14
592	Singrauli	Madhya Pradesh	51.7849	24.50	18.28	9
593	Jhargram	West Bengal	51.4092	25.90	15.51	10
594	North 24 Paraganas	West Bengal	51.0558	23.89	21.16	6
595	Karimganj	Assam	51.0006	25.61	16.39	9
596	Karbi Anglong	Assam	50.9332	15.86	20.08	15
597	Sidhi	Madhya Pradesh	50.9119	24.81	19.10	7
598	Zunheboto	Nagaland	50.8716	25.50	21.38	4
599	Kokrajhar	Assam	50.8224	21.79	19.03	10
600	Jorhat	Assam	50.7312	25.22	15.51	10
601	South Tripura	Tripura	50.5977	22.71	20.89	7
602	Pratapgarh	Rajasthan	50.4658	22.08	22.38	6
603	Jagatsinghapur	Odisha	50.1446	23.59	22.55	4
604	Kamrup	Assam	49.9251	24.50	16.42	9
605	North And Middle Andaman	A & N Islands	49.8955	26.77	23.13	0
606	Dhalai	Tripura	49.8840	22.15	20.73	7
607	Khowai	Tripura	49.8737	24.30	20.57	5
608	Solan	Himachal Pradesh	49.7424	26.70	19.04	4
609	Golaghat	Assam	49.4980	19.27	17.23	13
610	Sirmaur	Himachal Pradesh	49.4610	25.74	19.72	4
611	Dima Hasao	Assam	49.0806	21.01	18.07	10
612	Nicobars	A & N Islands	48.7373	23.44	25.29	0

SG-19						
Rank	District Name	State Name	Total Score (100)	Direct Observation (30)	Citizen Feedback (35)	Service level Progress (35)
613	Wokha	Nagaland	48.4029	26.11	19.29	3
614	Lahaul & Spiti	Himachal Pradesh	48.3750	23.74	24.63	0
615	Sivasagar	Assam	47.8285	23.38	17.45	7
616	Udalguri	Assam	47.8065	20.22	16.58	11
617	Bishnupur	Manipur	47.7626	25.26	18.50	4
618	Jehanabad	Bihar	47.7504	21.74	16.01	10
619	Chamba	Himachal Pradesh	47.6850	24.36	19.32	4
620	Malkangiri	Odisha	47.6286	21.57	22.06	4
621	Malda	West Bengal	47.5722	22.29	16.28	9
622	Mokokchung	Nagaland	47.5640	27.32	20.25	0
623	West Tripura	Tripura	47.3424	22.62	19.72	5
624	Rayagada	Odisha	46.9303	18.55	14.38	14
625	Ri Bhoi	Meghalaya	46.6637	20.60	22.06	4
626	Phek	Nagaland	46.6507	26.27	20.38	0
627	Ganjam	Odisha	46.5882	23.16	18.43	5
628	Dhemaji	Assam	46.5296	22.18	14.35	10
629	Churachandpur	Manipur	46.2059	27.37	14.84	4
630	South Goa	Goa	45.9749	26.13	19.84	0
631	South Salmara Mancachar	Assam	45.9176	22.96	13.95	9
632	Longleng	Nagaland	45.3770	25.36	20.01	0
633	Kohima	Nagaland	45.1696	24.18	17.99	3
634	North Goa	Goa	45.1023	25.90	19.20	0
635	Sambalpur	Odisha	44.8272	18.42	18.41	8
636	Baksa	Assam	44.7078	23.56	15.15	6
637	Nabarangapur	Odisha	44.7031	23.35	13.35	8
638	Imphal West	Manipur	44.2915	23.42	16.87	4
639	Unakoti	Tripura	43.6557	22.96	20.70	0
640	Tuensang	Nagaland	43.5471	24.28	19.27	0
641	Balangir	Odisha	43.4444	20.43	13.02	10
642	Koraput	Odisha	43.3393	17.96	15.38	10
643	East Garo Hills	Meghalaya	43.2274	25.34	15.89	2
644	Imphal East	Manipur	43.2073	23.41	15.80	4
645	Khordha	Odisha	43.1587	19.48	13.68	10
646	Kakching	Manipur	43.1409	24.45	14.69	4
647	West Jaintia Hills	Meghalaya	43.0535	22.27	17.78	3
648	Cuttack	Odisha	43.0432	19.65	19.39	4
649	Baleswar	Odisha	42.9977	22.54	16.45	4
650	Dhenkanal	Odisha	42.9895	20.52	18.47	4
651	Nuapada	Odisha	42.9226	20.65	12.28	10
652	South Garo Hills	Meghalaya	42.5447	19.80	18.75	4
653	Kiphire	Nagaland	42.5309	23.80	18.73	0

SG-19						
Rank	District Name	State Name	Total Score (100)	Direct Observation (30)	Citizen Feedback (35)	Service level Progress (35)
654	Jajapur	Odisha	42.4336	16.90	18.54	7
655	Sonepur	Odisha	42.1974	21.48	15.72	5
656	Pherzawl	Manipur	41.9741	26.42	11.56	4
657	Sundargarh	Odisha	41.9202	20.48	14.44	7
658	Thoubal	Manipur	41.7358	20.89	16.85	4
659	Barpeta	Assam	41.7190	23.84	10.88	7
660	Kamjong	Manipur	41.6693	23.05	14.62	4
661	Kendrapara	Odisha	41.5860	23.19	18.40	0
662	Kandhamal	Odisha	41.5664	20.96	13.61	7
663	Peren	Nagaland	41.5054	24.20	17.31	0
664	North Garo Hills	Meghalaya	41.4921	21.61	17.88	2
665	Kangpokpi	Manipur	41.4808	23.21	14.27	4
666	Mayurbhanj	Odisha	41.1955	18.94	14.26	8
667	Senapati	Manipur	40.8880	23.07	13.82	4
668	Kendujhar	Odisha	40.4750	17.36	19.12	4
669	Mon	Nagaland	40.4152	23.09	17.32	0
670	Dimapur	Nagaland	40.4115	23.72	16.69	0
671	Bargarh	Odisha	40.2335	20.04	16.19	4
672	Angul	Odisha	40.2304	19.99	20.24	0
673	Bhadrak	Odisha	39.4534	20.40	15.05	4
674	South West Garo Hills	Meghalaya	38.7279	24.52	9.21	5
675	Debagarh	Odisha	38.6529	23.40	12.25	3
676	Kalahandi	Odisha	38.2035	20.98	13.23	4
677	Jiribam	Manipur	38.0241	22.19	11.83	4
678	Noney	Manipur	37.5329	21.96	11.57	4
679	Puri	Odisha	36.3764	15.24	17.14	4
680	Tamenglong	Manipur	35.9901	23.39	11.60	1
681	Jharsuguda	Odisha	35.3109	20.10	11.21	4
682	West Garo Hills	Meghalaya	34.6065	17.40	10.21	7
683	Boudh	Odisha	31.0272	15.00	11.03	5







पेयजल एवं स्वच्छता विभाग  
जल शक्ति मंत्रालय  
भारत सरकार

DEPARTMENT OF DRINKING WATER AND SANITATION  
MINISTRY OF JAL SHAKTI  
GOVERNMENT OF INDIA



Swachh Gram Swachh Zila

# Swachh Survekshan Grameen 2019

